



hazardous waste interrogator

A flexible search and report tool for hazardous waste data in
England

Introduction

The Hazardous Waste Interrogator lets you view and analyse detailed information from our hazardous waste database. You can find data on the different types and quantities of waste produced, where it is produced and deposited, and how it is disposed of and recovered in England.

The Environment Agency has a requirement to monitor movements of hazardous waste in England and Wales. The hazardous waste database registers hazardous waste producers and maintains the details of the wastes as they move through waste management facilities. Hazardous waste may move between facilities and these movements are recorded separately. Because of this there will be some double counting of hazardous waste in the database. **This should be taken into account when using this data.**

The tool is designed primarily for use by local authorities and others carrying out research on waste. It offers the opportunity to extract information on hazardous waste movements by single European Waste Catalogue (EWC) categories if required. You can group reports by geographic area, waste facility or waste type. You can control the level of detail and the layout of results tables.

Geographical locations are still specified in former planning regions so that comparisons can be made with data from previous years.

Information for Wales

On 1 April 2013 the responsibilities for environmental regulation were split between the Environment Agency (for England) and Natural Resources Wales (for Wales).

This means that the Environment Agency will be providing data from 2013 for England only. Natural Resources Wales (NRW) will provide data for Wales

The tool also provides some standard reports and the ability to create your own reports.

Part 1 is a user manual. It gives you a step-by-step, button-by-button explanation of how the interrogator works, illustrated by screen-shots of selections and examples of results obtained.

Part 2 sets out a series of worked examples. It starts by showing you a simple query and builds to more complex and detailed results set out in table format.

Use of the data

A licence will be provided with this interrogator. Please note all the requirements before you use the data.

Part 1: User Manual

Main Window

Hazardous Waste Interrogator 2010 Data

[Exit Interrogator](#) Version 2.0 2009 Environment Agency

Data Options

Select places for which you would like information

Arose in: **All**

Deposited: **All**

Select waste type (EWC Category)

Include all

► Add ◀ Remove

Select disposal or recovery methods

Include all

► Add ◀ Remove

Summary

► Clear selections

Report Options

Report arisings by: Region

Report deposits by: Region

Show waste type by EWC Category

☐ Dont Show ☒ 2 Fig ☐ 4 Fig ☐ 6 Fig

Show quantities in:

☒ Te ☐ K Te

Show disposal or recovery method

☒ Dont Show ☐ As Rows ☐ As Columns

Show movements

☐ Imports ☒ All Consignments ☐ Exports

► View data ► Print report ► Export data

A screenshot of the main window and the interrogator is shown above.

You use the data selector to set the options for retrieving information; the report options form on the left lets you customise the content and format of the report.

You can find out specific information on the following categories:

- where the waste is produced or deposited
- the type of waste
- how the waste is managed

You can specify information by different geographical levels:

- planning region
- sub-region (often, though not always, county level)
- waste planning authority or local authority district

The arrows, bottom left, let you view the data before you print it and choose whether to print out a report or export it as a spreadsheet.

Retrieving data in more detail

Location selector

Use the buttons shown on the screenshot below to select the location of where the waste came from or where it was deposited. Choosing one of these options takes you to the next stage in the selection process.

A screenshot of the **locations** box is shown below.

This form, which is the same for the locations where waste comes from or deposited, contains four separate drop-down lists and four 'selection location' panels.

These are grouped into former planning regions, sub-regions, waste planning authorities and local authority districts. To make selection easier, the drop-down lists filter automatically. For example, if you select 'London' as the 'planning region', this restricts the contents of the sub-region and local authority boxes to those within London. If you select 'South East London' as the sub-region, this restricts the local authority list to boroughs in South East London.

Make you first selection from the drop-down lists and click on the **add** arrow. The **location selector** panel will be updated to show your selection. You can add further locations by repeating this.

You can remove selections from the panel by highlighting them and clicking on the **remove** arrow. You can highlight multiple locations and add them to or remove them from each panel in one go.

Note: the interrogator uses your selections in the following way. The **OR** operator is applied to multiple selections within each panel. The **AND** operator is applied to selections between panels. Examples are given below:

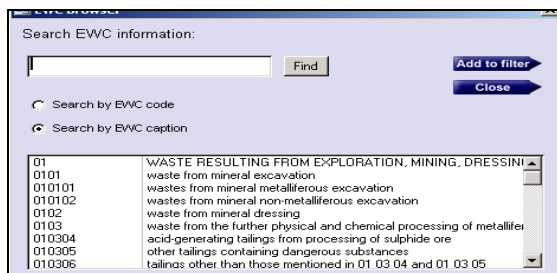
1. If your selection in the **planning regions** panel contained **North East, North West** and **West Midlands** as chosen locations, the tool would retrieve data showing the waste that was produced within the North East, the North West or the West Midlands.
2. If you selected the three regions above in the planning regions panel but the sub-regions panel contained only **Cumbria**, then the tool would only show data for waste from Cumbria.

So the basic rule is that you should only select multiple locations within the same **select locations** panel.

Waste type selector

The interrogator allows you to retrieve data for any type of waste. The **waste type** selection panel is shown below:

The drop-down list box contains all European Waste Catalogue 2,4 and 6 figure codes. You select a code by highlighting it and pressing the **add** button. This will update the **waste selector** panel. Alternatively, you can click the **Search EWC** button. This brings up the EWC browser screen shown below:



You can use the EWC browser to search for waste by either entering an EWC code number or a text string contained within the description of the waste material (default). Text searches are based on the entered text being found anywhere within the description of the waste.

For example, entering **oil** would show codes for all wastes whose descriptions included oil, but it would also find waste that contained the words **soil**, **spoiled** and **boiler**.

Once the list has been generated, you can select one or more items using the SHIFT and CONTROL keys to add waste types. Highlight the waste types you want and press the **add filter** button. The list in the **selected wastes** panel will be updated to reflect your chosen waste types.

Disposing of and recovering waste

The interrogator can provide data on the quantities of waste managed by the specific disposal or recovery methods listed below:

- exported
- incineration with energy recovery
- incineration without energy recovery
- lagooning
- landfill
- long term storage
- recovery
- transfer before disposal (D)
- transfer before recovery (R)
- treatment
- other fate

To restrict the data to one (or more) specific disposal or recovery option, select from the drop-down list and use the **add** arrow to include it in the **disposal or recovery option** panel. The panel will be updated to reflect the options you have chosen.

Summary panel

The summary panel provides a reminder of all data retrieval specifications. Click with the left mouse button on the option you are interested in for each variable.

Reporting

If you do not choose any specific location, the tool will show a national table with a defaulted geographical breakdown to regional level.

Retrieving data

To retrieve data, click the **get data** button. The database will conduct its search on your selections, make the necessary calculations and show a table with the data you have chosen.

Viewing data

A screenshot of the data viewing form is shown below:

| Arising From | EWC_Code | ShortClass | Tonnage | Deposited In |
|--------------|----------|---|---------|---------------|
| (Unknown) | 06 | Inorganic Chemical Processes | 9.8 | East Midlands |
| (Unknown) | 08 | MPSU Paints, Varnish, Adhesive and Inks | 4.1 | East Midlands |
| (Unknown) | 11 | Metal Treatment and Coating Processes | 7.6 | East Midlands |
| (Unknown) | 13 | Oil and Oil/Water Mixtures | 47.0 | East Midlands |
| (Unknown) | 14 | Solvents | 0.4 | East Midlands |
| (Unknown) | 15 | Packaging, Cloths, Filter Materials | 1.2 | East Midlands |
| (Unknown) | 16 | Not Otherwise Specified | 474.5 | East Midlands |
| (Unknown) | 17 | CDD Waste and Asbestos | 104.9 | East Midlands |

This form displays the filter options chosen and the number of rows of data to be returned. As well as letting you view the data, you can choose to print the results or export it in another file format. The export formats supported include Rich Text Format (Word), Microsoft Excel, DOS text and HTML.

Menu Bar

The menu bar provides other functions when viewing data. Under **Records** you can:

- **Index data** by placing the cursor in the column you wish to sort and clicking either ascending or descending. All the data will then be sorted in the order of the values in that column.
- **Filter data** by highlighting a specific word(s) like **East Midlands** or **Treatment** and clicking **filter by selection** on the menu. The information displayed will then be restricted depending on your selection.
- **Find data** by using the **find** command on the menu to return data on the criteria you enter.

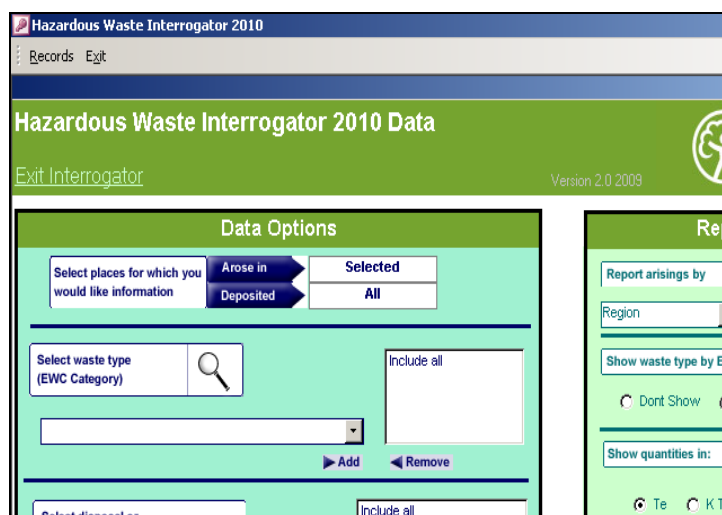
Part 2: Example

An example of how you can use the interrogator is given below:

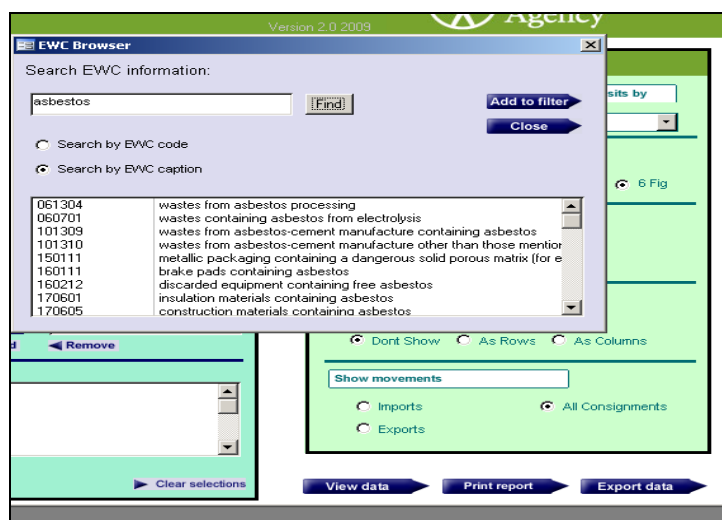
To find data on the amount of asbestos waste in the North West by waste planning authority that is consigned directly to landfill, do the following:

- In data selector options click the **Arose in** button.
- Click on **planning region** and select **North West**.
- Click **add** to update the **select locations** panel.
- Press the **close** button.

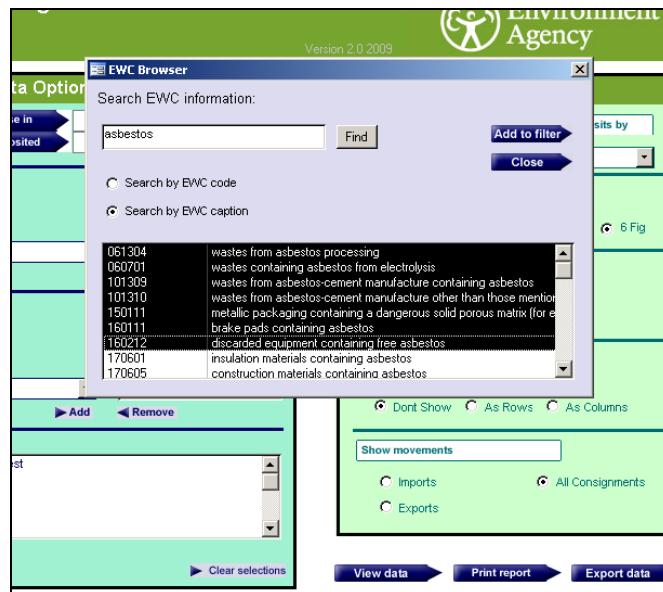
Your screen should look like the one below.



- Click the **Select waste type (EWC category)** button and type in **asbestos** in the browser window and then click **find**.



- Click on the first description of asbestos waste and holding **SHIFT** down, click on the last description. This will highlight all the descriptions containing the word **asbestos**.



- Click on the **add filter** button.

You will be returned to the main window and the waste selection window will have been updated.

- In **Select disposal or recovery methods**, select **landfill** and click the **add** button. This updates the window.
- In **reporting options** set **report arisings by** to **WPA** and set **report deposits by** option to **don't show**.
- Set **show waste type by EWC category** option to six figures; leave units as **tonnes**.

You can leave **show disposal or recovery method** as **rows**, change it to **columns** or set it to **none** as output data will be all landfill anyway. If you had more options e.g. treatment selected, you could choose how to display your output.

You should leave **show movements** as **all**.

- Press **get data** to view the information you have chosen.

Restrictions

Due to restrictions on the amount of data this tool can handle, it cannot provide certain information. This includes finding six-figure waste codes for all fates at a district to district level. A message box lets you know if the information you have requested cannot be found.