

Dataset documentation

Preliminary Flood Risk Assessment maps - supporting information

13th December 2018

This document will help you understand and use the interactive preliminary flood risk assessment (PFRA) maps for river basin districts in England

Dataset description

The preliminary flood risk assessment maps are presented at a large river catchment scale and these areas are known as river basin districts (RBDs). A RBD covers an entire river system, including rivers, lakes, groundwater, estuaries and coastal waters. These maps show background information that informs how we understand flood risk:

- RBD and sub RBD boundaries
- the coastline
- land use
- topography

You can turn different data sets on and off because the maps are interactive.

We have worked with National Resources Wales to produce different maps for the Dee and Severn RBDs.

Please use the following link to find out if you're at risk of flooding in England (<https://www.gov.uk/check-flood-risk>) and to view maps showing the risk of flooding from rivers, the sea and reservoirs.

Update frequency

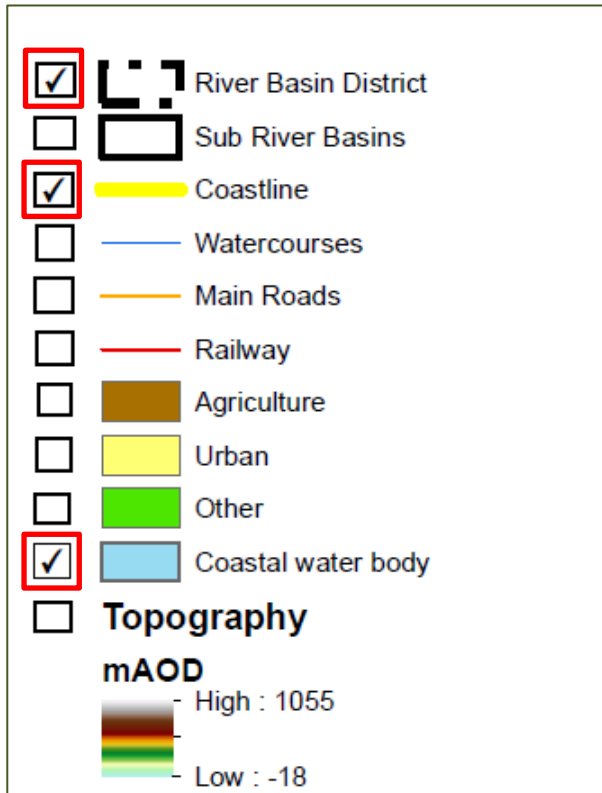
The European Floods Directive (2007/60/EC) sets certain requirements for EU member states to assess and map flood risk and plan for managing it. These requirements are transposed into the Flood Risk Regulations (2009), which set out a process to complete an assessment of flood risk (known as a preliminary flood risk assessment (PFRA)) and produce supporting maps of RBDs. The cycle of work repeats every six years. We will next update the maps in 2024.

Common questions and known issues

Displaying information

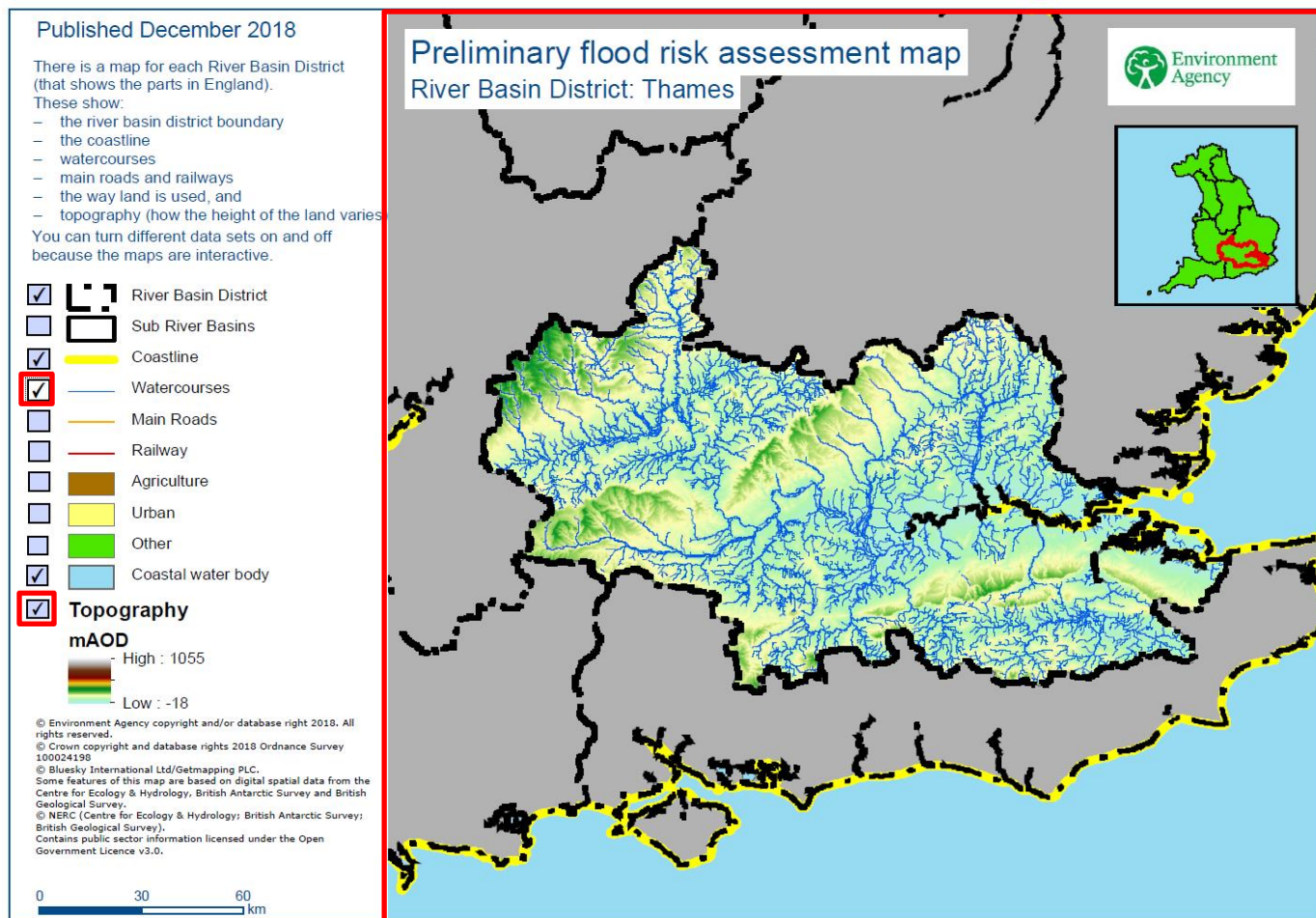
Step 1: Open the map

When you open the map, the data layers RBD boundary, coastline and coastal water body will already be ticked in the legend, shown in the example below. The legend is the name given to the box containing the list of data layers. So, by default, you will see these layers on the map. Maps close to Scotland and Wales will also already show the Welsh and/or Scottish border.



Step 2: Look at the legend and decide which data you would like to display

Next you can choose which data you want to display on the map. Tick the box to display your selected data. A black tick will appear and you will be able to see the data you have chosen on the map. This is shown on the example below, where the chosen data layers watercourses and topography are displayed.



Other map functions

- If you decide that you no longer want to display one of the data layers, untick the box and the data will no longer show on the map.
- The small map in the top right corner of the map shows the RBD you are currently viewing in red and its location in England.
- You can't turn off the grey masked areas.

FAQs

1. Can I see multiple datasets on the map at once?

Yes. You can view as many datasets as you like at one time by selecting them on the legend.

2. Why do some boxes not display the data?

This is because there is no data in this area for this dataset.

3. Why are areas within the river basin masked out?

The maps only present data for England. Part of the Severn RBD and part of the Dee RBD are in Wales. Part of the Solway Tweed RBD is in Scotland. The maps do not show data for Wales or Scotland so these areas are masked out. For information about flood risk in Wales contact Natural Resources Wales (NRW). For information about flood risk in Scotland contact Scottish Environment Protection Agency (SEPA).

4. Where can I access the data contained in the maps?

The table below shows where we found the data. If it is shown as 'open data' you can download it from data.gov.uk (www.data.gov.uk) as a GIS file.

Dataset content

Datasets used in the PFRA mapping

Map Layer	Source Data	Description
River basin district	WFD river basin districts cycle 2 (Environment Agency)	Open source data displaying the ten river basin districts used within the study to define "the area of land and sea, made up of one or more neighbouring river basins together with their associated groundwater's and coastal waters".
Sub River Basins	WFD river waterbody catchments cycle 2 (Environment Agency)	Open source data displaying sub river basins found within each river basin district, representing "areas of land from which all surface run-off flows through a series of streams, rivers and, possibly, lakes to a particular point in the water course such as a river confluence".
Coastline	Boundary-line (Ordnance Survey)	UK coastline derived from 'mean high water' line.
Watercourses	Statutory main river map (Environment Agency)	Open source data that defines statutory watercourses in England designated as Main Rivers.
	OS Open Rivers (Ordnance Survey)	Watercourse network of Great Britain showing central alignment of watercourses.
Main Roads	OS Open Roads (Ordnance Survey)	Digital representation of Great Britain's Roads filtered to display Motorways and A roads only.
Railway	Network Rail - railway network Inspire data (Network Rail)	Open source data displaying the centre line of the railway track for the network that is managed by Network Rail.
Agriculture	Agricultural Land Classification (ALC) Grades - Pre 1988 (Natural England)	Open data containing a national land classification filtered according to type.
Urban		
Other		
Coastal water body	Boundary-line (Ordnance Survey)	Derived using 'mean high water' line to create a polygon of the sea beyond.
Topography	Integrated Height Model (Environment Agency)	An elevation model providing full spatial coverage using the best available height data for every location in England, selected from a number of sources.
Welsh and Scottish borders	Boundary-line (Ordnance Survey)	Open data defining all levels of electoral and administrative boundaries, filtered to country.

Note: We do our best to avoid quality problems, but this dataset reflects the data we hold. Our datasets may contain errors.