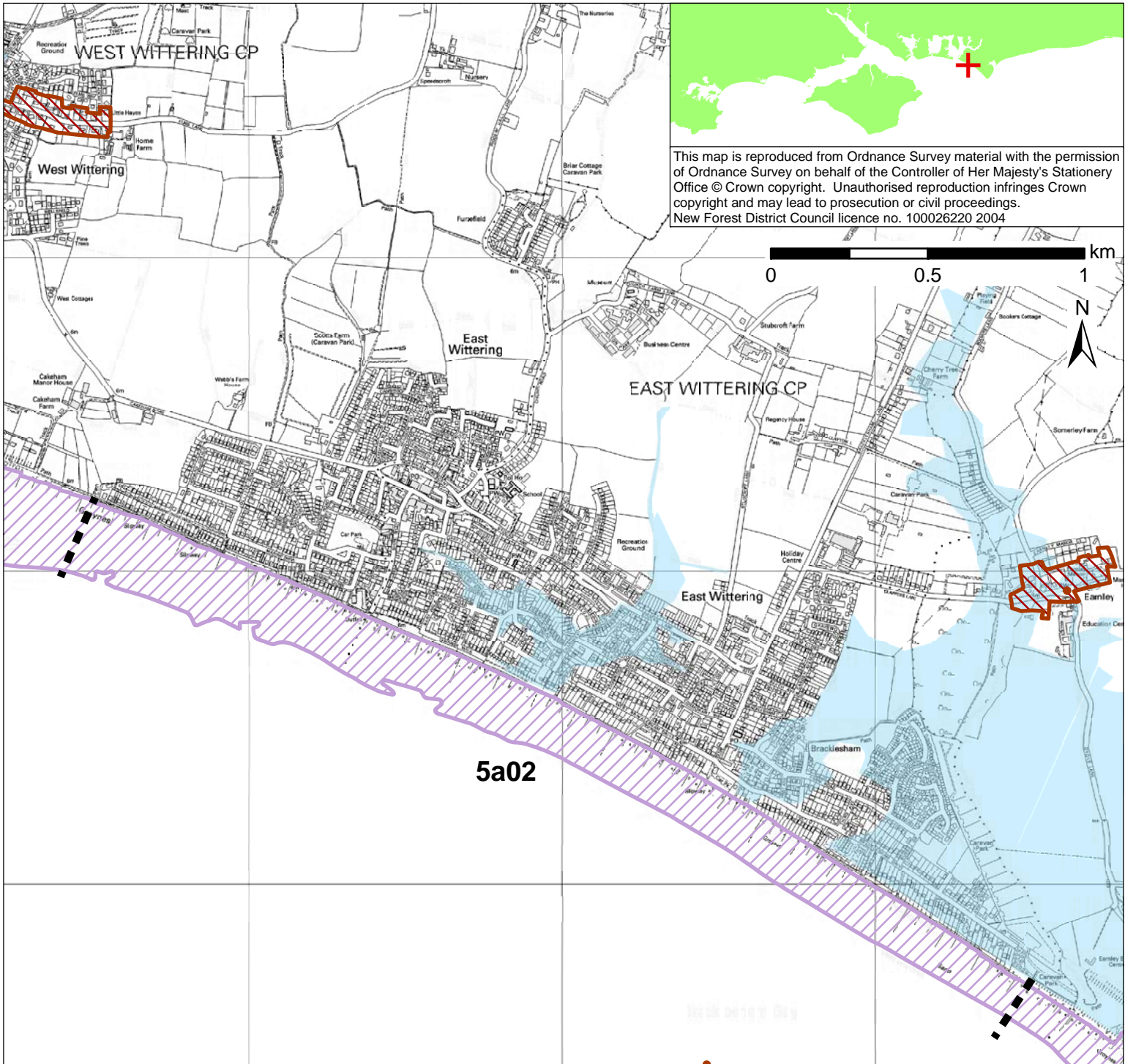


Policy Unit 5A02 Bracklesham to East Wittering		
Summary description of Policy Unit		
<p>The significant numbers of residential properties, community and commercial facilities in East Wittering and Bracklesham are situated on relatively high ground. Archaeological features have been discovered in the cliffs and inter-tidal zone. Grade 2 and 3 agricultural hinterland is present. Bracklesham Bay is designated as a geological SSSI. Offshore is the Bracklesham Balls Marine Site of Nature Conservation Importance. Beaches, access and a public launching site are important recreation facilities. This Policy Unit has been defined and assessed in the approved Pagham to East Head Coastal Defence Strategy, which determined a HTL policy for each epoch.</p>		
Final policy options		SMP1 Ref CPU2 Hold the Line
Epoch 1 From Present Day (up to 2025)	Epoch 2 Medium Term (2025 to 2055)	Epoch 3 Long Term (2055 to 2105)
Hold the Line	Hold the Line	Hold the Line
Summary of rationale behind final policy options		
<p>Given the significant number of residential properties, community and commercial facilities, and associated service and local transport infrastructure in East Wittering and Bracklesham and the importance of the frontage in terms of amenity and recreation, the intent here is to maintain and improve the current defence line. Defences will have to be raised over time to account for the risk from rising sea levels. However, as a result, the foreshore may experience significant steepening and lowering and the amenity beach and local economy may be adversely affected unless beach replenishment operations are undertaken. This policy has been assessed as the preferred option through the approved Pagham to East Head Coastal Defence Strategy.</p>		
Policy changes through Public Consultation		
None		
Funding		
<p>It is unlikely that central government funding would be secured for identified works, as determined through the approved Pagham to East Head Coastal Defence Strategy. Alternative sources of public funding may be available to Local Authority.</p>		
Further Studies (identified in Action Plan)		
None		



This map is reproduced from Ordnance Survey material with the permission of Ordnance Survey on behalf of the Controller of Her Majesty's Stationery Office © Crown copyright. Unauthorised reproduction infringes Crown copyright and may lead to prosecution or civil proceedings. New Forest District Council licence no. 100026220 2004

POLICY

From Present Day (up to 2025):	Medium-Term (2025 to 2055):	Long-Term (2055 to 2105):
Hold the Line	Hold the Line	Hold the Line

- Indicative erosion zone up to 2025
- Indicative erosion zone up to 2055
- Indicative erosion zone up to 2105
- Policy Unit Boundary
- International / National Designations
- Important Heritage Sites
- 2108 Flood Risk Area (1 in 200 year) © Environment Agency