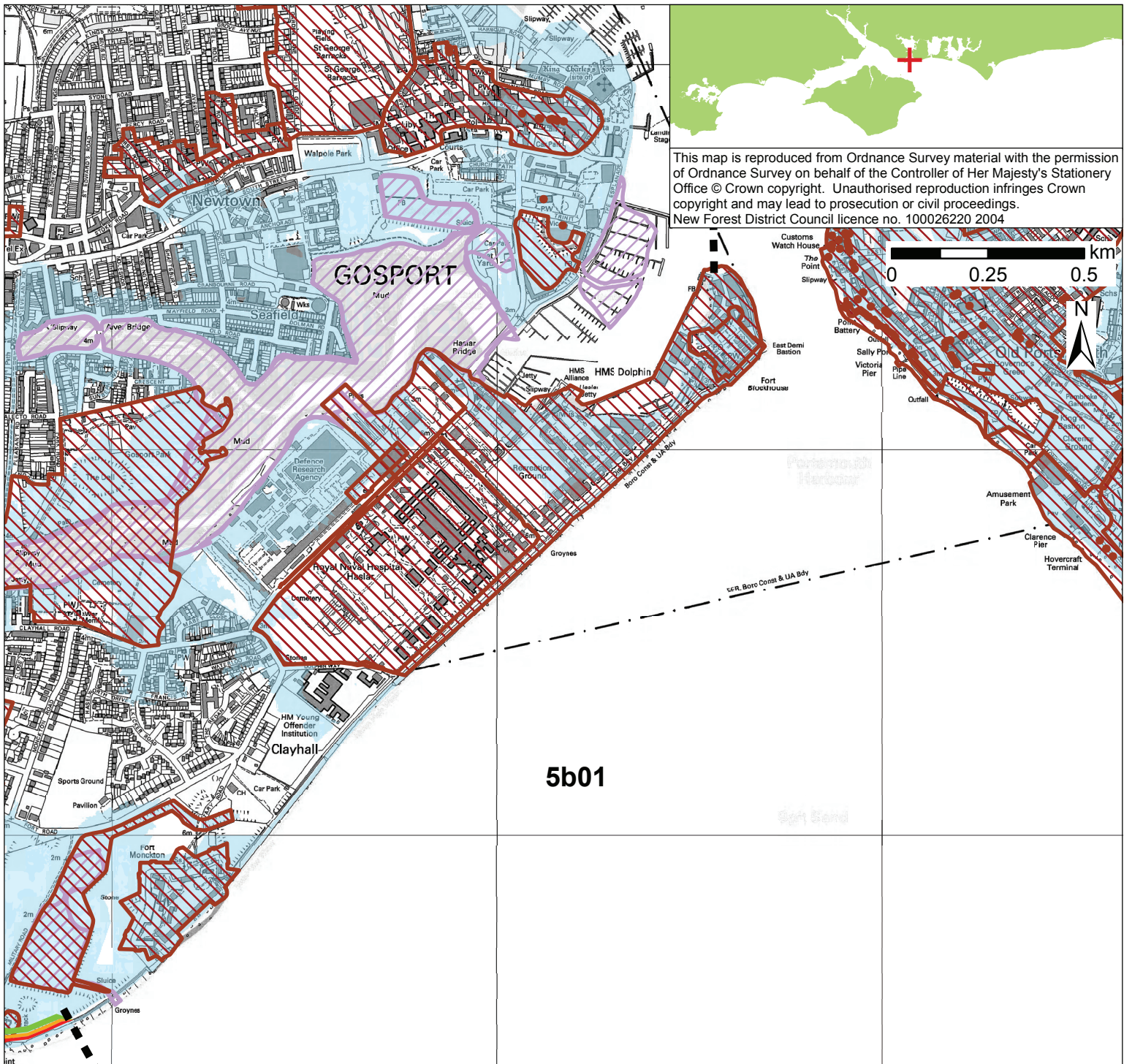


<b><i>Policy Unit 5B01 Portsmouth Harbour entrance to Gilkicker Point</i></b>		
<b>Summary description of Policy Unit</b>		
<p>This developed frontage area comprises significant MOD assets, residential properties in Gosport, community facilities and transport network critical to Gosport. The existing defences are owned and maintained by the MOD and Local Authority. Sediment transport is from west to east along this frontage. An area on Gilkicker Point is of International, European and national nature conservation importance provide high tide roost sites and support the adjacent and nearby SPA/Ramsar sites. Heritage features include Royal Haslar Hospital, Scheduled Ancient Monuments, listed and historic buildings, Parks and Gardens, Monuments and maritime features, along with Conservation Areas.</p>		
<b>Final policy options</b>		SMP1 Ref CPU10 Hold the Line
<b>Epoch 1 From Present Day (up to 2025)</b>	<b>Epoch 2 Medium Term (2025 to 2055)</b>	<b>Epoch 3 Long Term (2055 to 2105)</b>
<b>Hold the Line</b>	<b>Hold the Line</b>	<b>Hold the Line</b>
<b>Summary of rationale behind final policy options</b>		
<p>The key drivers to continuing to hold the existing defence line will be to provide flood protection to the significant heritage features, MOD assets and infrastructure, residential property and amenity open space. The tidal floodplain is largely constrained by the topography for the majority of this unit but is more extensive at Gilkicker Point and extends north westwards to Lee-on-the-Solent (adjacent unit) Beach Management and replenishment on this frontage and adjacent frontages to the west will maintain amenity beach levels and to continue to provide suitable conditions for saline lagoons and vegetated shingle communities at Gilkicker Point. Coastal monitoring will be key to the successful management of this frontage.</p>		
<b>Policy changes through Public Consultation</b>		
None		
<b>Funding</b>		
<p>Although there is currently a doubt about whether government funding can be secured for identified works, the Borough Council and others are aware of the historical importance of many of the assets, their potential value in providing services to ex-service personnel and the value of residential property and open space. Funding would also need to be secured through the MOD for MOD defences.</p>		
<b>Further Studies (identified in Action Plan)</b>		
<p>Portsmouth Harbour entrance to Portchester Flood and Coastal Erosion Risk Management Strategy  Portsmouth Harbour entrance to River Hamble Flood and Coastal Erosion Risk Management Strategy</p>		



**POLICY**

From Present Day (up to 2025):	Medium-Term (2025 to 2055):	Long-Term (2055 to 2105):
Hold the Line	Hold the Line	Hold the Line

- Indicative erosion zone up to 2025
- Indicative erosion zone up to 2055
- Indicative erosion zone up to 2105
- Policy Unit Boundary
- International / National Designations
- Important Heritage Sites
- 2115 Indicative Floodplain (1 in 200 year) provided from PUSH