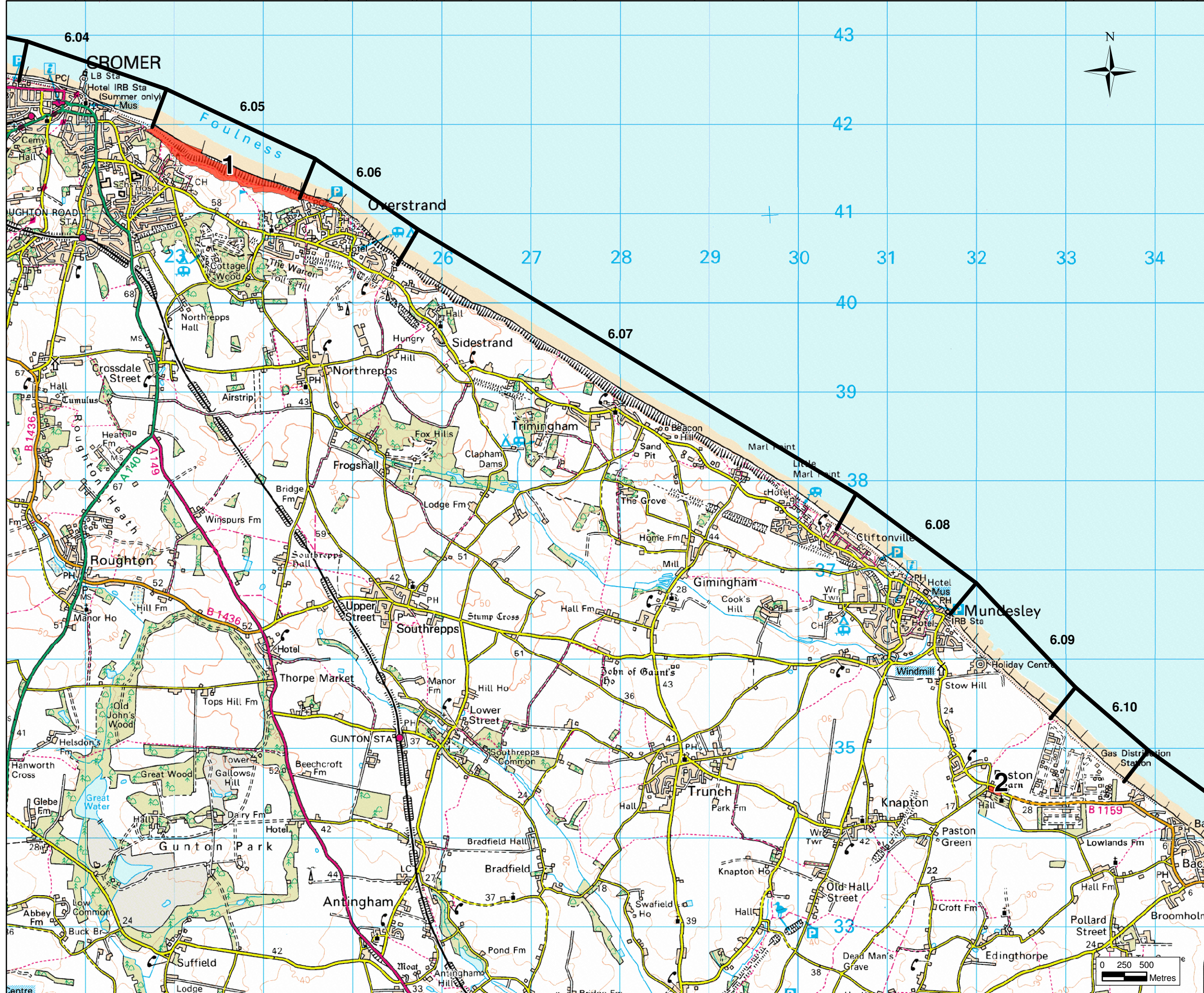




# 3 Special Areas of Conservation (SAC)



**KEY:**

-  Policy Unit
-  SACs
- 1 Overstrand Cliffs SAC
- 2 Paston Great Barn SAC

CLIENT:

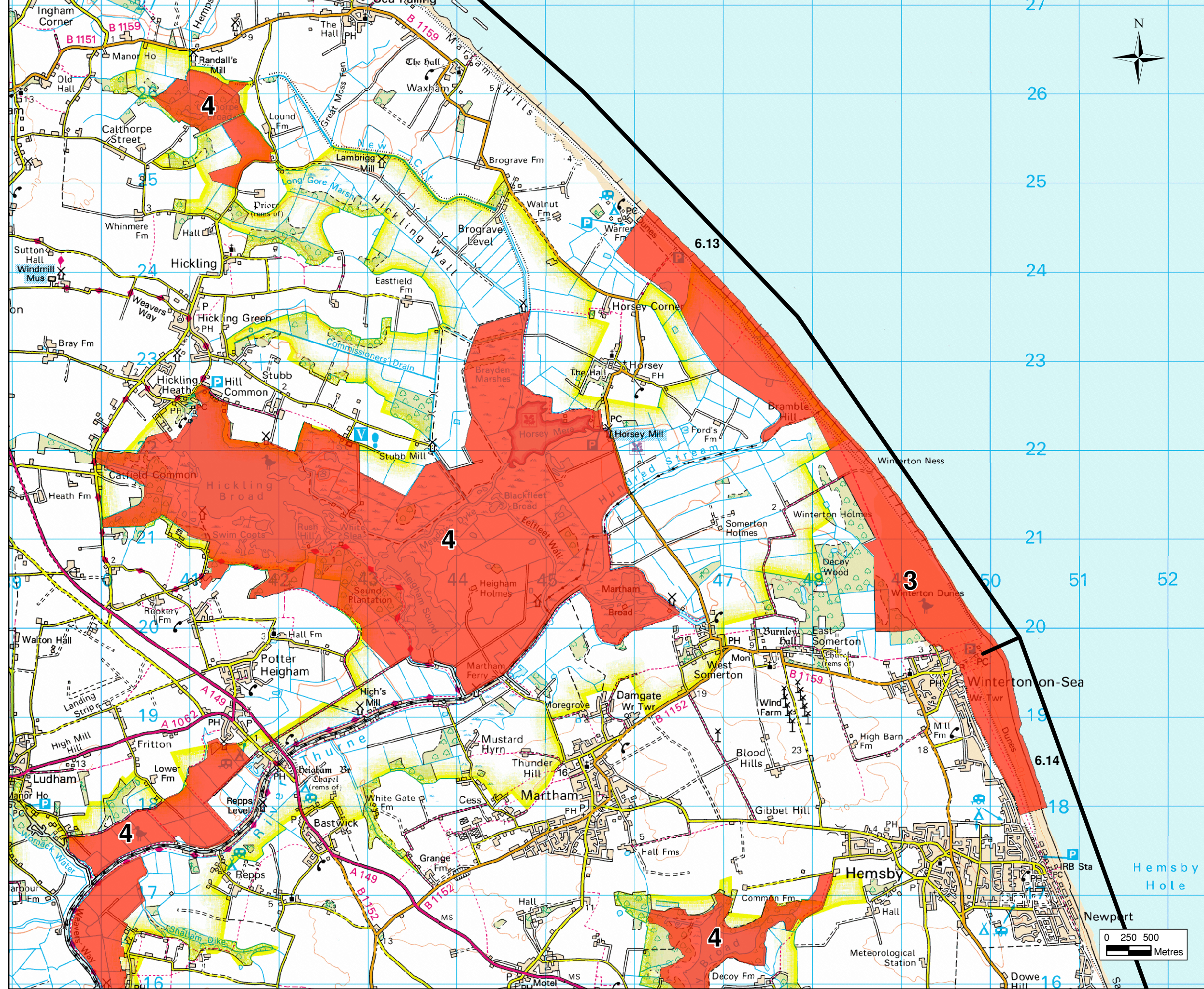




PROJECT: KELLING TO LOWESTOFT NESS SMP

TITLE: FIGURE 3.1 SACs

SCALE: 1:40,000	DATE: 08-07-09	GIS: CB/CS	REV: A
--------------------	-------------------	---------------	-----------

**AECOM**  
 Lynnfield House, Church Street, Altrincham, Cheshire, WA14 4DZ  
 T +44 (0) 161 927 8200  
 F +44 (0) 161 927 8499  
 www.aecom.com



- KEY:**
-  Policy Unit
  -  SACs
  - 3** Winterton-Dunes SAC
  - 4** The Broads SAC

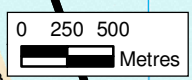
**CLIENT:**

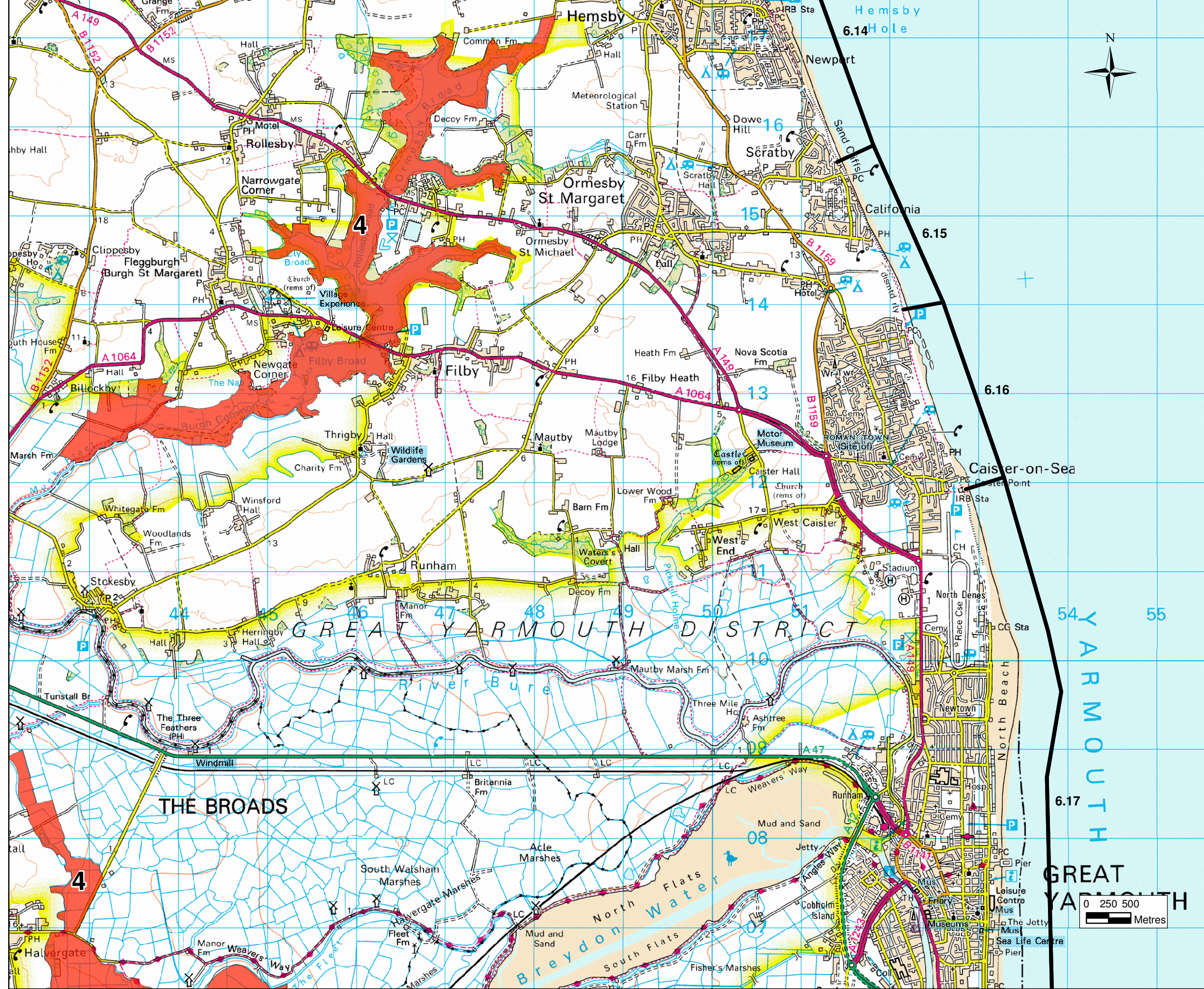
**PROJECT:** KELLING TO LOWESTOFT NESS SMP

**TITLE:** FIGURE 3.2 SACs

<b>SCALE:</b> 1:40,000	<b>DATE:</b> 08-07-09	<b>GIS:</b> CB	<b>REV:</b> A
---------------------------	--------------------------	-------------------	------------------

**AECOM**  
Lynnfield House, Church Street, Altrincham, Cheshire, WA14 4DZ  
T +44 (0) 161 927 8200  
F +44 (0) 161 927 8499  
www.aecom.com





**KEY:**

- Policy Unit
- SACs
- 4 The Broads SAC

**CLIENT:**

**GREAT YARMOUTH**  
COUNCIL

**NORTH NORFOLK**  
DISTRICT COUNCIL

**NATURAL ENGLAND**

**Broads Authority**  
The Broads - a member of the National Park family

**Water Management Alliance**

**Environment Agency**

**NORFOLK COAST PARTNERSHIP**

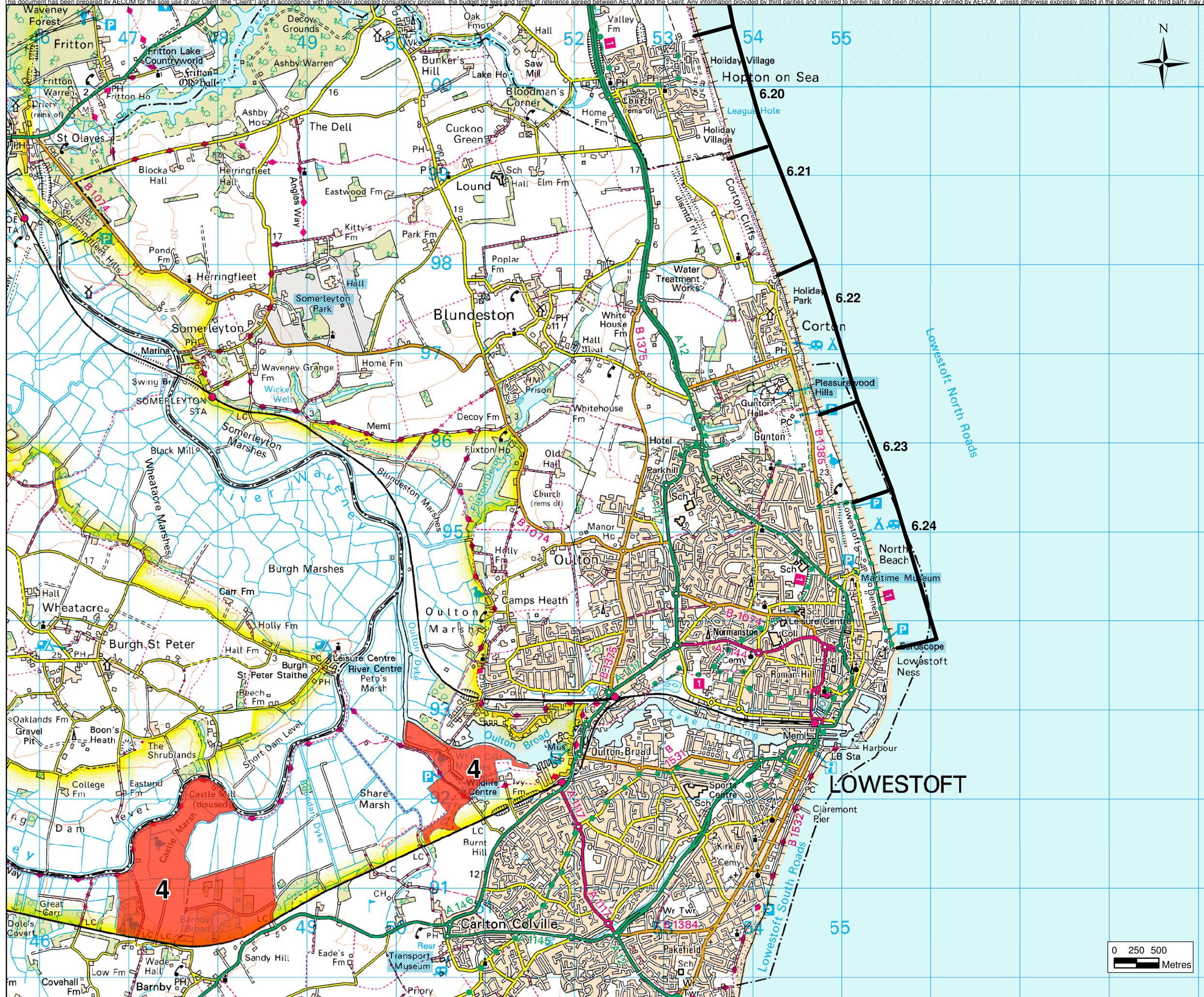
**PROJECT:** KELLING TO LOWESTOFT NESS SMP

**TITLE:** FIGURE 3.3 SACs

<b>SCALE:</b> 1:40,000	<b>DATE:</b> 09-07-09	<b>GIS:</b> CB	<b>REV:</b> A
---------------------------	--------------------------	-------------------	------------------

**AECOM**

Lynnfield House, Church Street, Altrincham, Cheshire, WA14 4DZ  
 T +44 (0) 161 927 8200  
 F +44 (0) 161 927 8499  
 www.AECOM.com



**KEY:**

- Policy Unit
- SACs
- 4** The Broads SAC

**CLIENT:**

GREAT YARMOUTH BOROUGH COUNCIL

NORTH NORFOLK DISTRICT COUNCIL

NATURAL ENGLAND

Broads Authority  
The Broads - a member of the National Park family

Water Management Alliance

Environment Agency

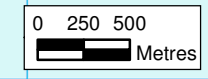
NORFOLK COAST PARTNERSHIP

Waveney District Council  
Serving the Community

**PROJECT:** KELLING TO LOWESTOFT NESS SMP

**TITLE:** FIGURE 3.4 SACs

<b>SCALE:</b> 1:40,000	<b>DATE:</b> 09-07-09	<b>GIS:</b> CB	<b>REV:</b> B
---------------------------	--------------------------	-------------------	------------------



**AECOM**

Lynnfield House, Church Street, Altrincham, Cheshire, WA14 4DZ  
 T +44 (0) 161 927 8200  
 F +44 (0) 161 927 8499  
 www.AECOM.com