

Medway Estuary and Swale Shoreline Management Plan SMP

Appendix E – Issues and Objectives Evaluation

Contents Amendment Record

This report has been issued and amended as follows:

Issue	Revision	Description	Date	Approved by
1	0	Consultation Draft	01/05/07	N Pontee
	1	Amendments following public consultation and QRG review	31/10/08	N Pontee
2	2	Final	19/11/09	N Pontee

Halcrow Group Limited

Burderop Park, Swindon, Wiltshire SN4 0QD

Tel +44 (0)1793 812479 Fax +44 (0)1793 812089

www.halcrow.com

Halcrow Group Limited has prepared this report in accordance with the instructions of their client, the Environment Agency, for their sole and specific use. Any other persons who use any information contained herein do so at their own risk.

© Halcrow Group Limited 2010

Appendix E: Issues and Objective Evaluation

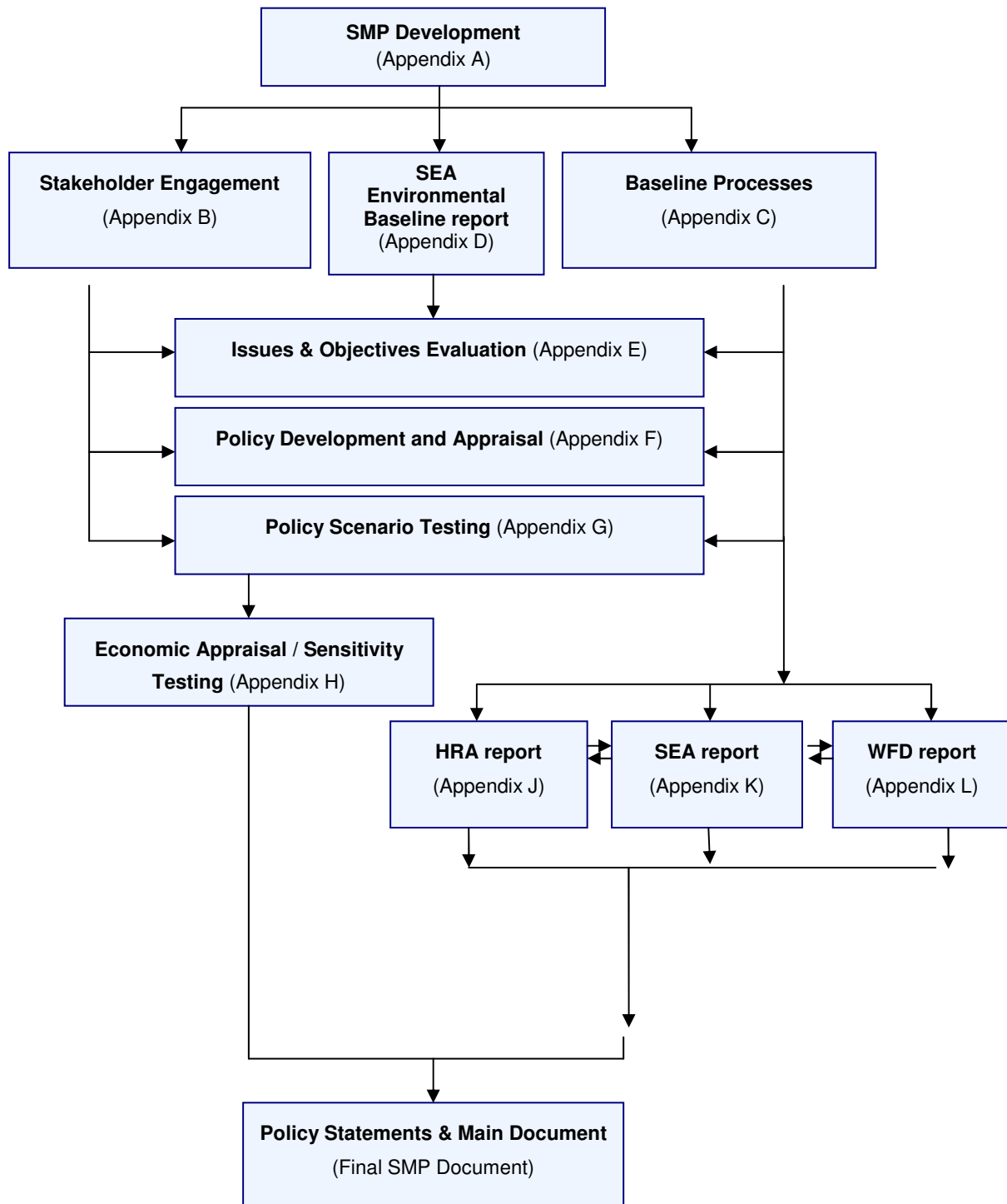
- E1 INTRODUCTION..... 1**
- E2 METHODOLOGY..... 2**
- E3 THE ISSUES AND OBJECTIVES TABLE 6**

The Supporting Appendices

This appendix and the accompanying documents provide all of the information required to support the Shoreline Management Plan. They ensure that there is clarity in the decision-making process and that the rationale behind the policies is both transparent and auditable. The appendices are:

A: SMP Development	This reports the history of development of the SMP, describing more fully the plan and policy decision-making process.
B: Stakeholder Engagement	All communications from the stakeholder process are provided here, together with information arising from the consultation process.
C: Baseline Process Understanding	Includes baseline process report, defence assessment, NAI and WPM assessments and summarises data used in assessments.
D: SEA Environmental Baseline Report (Theme Review)	This report identifies and evaluates the environmental features (natural environment, landscape character, historic environment, land use, infrastructure and material assets, and population and human health).
E: Issues & Objective Evaluation	Provides information on the issues and objectives identified as part of the Plan development, including appraisal of their importance.
F: Initial Policy Appraisal & Scenario Development	Presents the consideration of generic policy options for each frontage, identifying possible acceptable policies, and their combination into 'scenarios' for testing.
G: Scenario Testing	Presents the policy assessment and appraisal of objective achievement towards definition of the Preferred Plan (as presented in the Shoreline Management Plan document).
H: Economic Appraisal and Sensitivity Testing	Presents the economic analysis undertaken in support of the Preferred Plan.
I: Metadatabase and Bibliographic database	All supporting information used to develop the SMP is referenced for future examination and retrieval.
J: Habitat Regulations Assessment	Presents an assessment of the effect the plan will have on European sites.
K: Strategic Environmental Assessment	Presents the Strategic Environmental Assessment of the Plan.
L: Water Framework Compliance	Presents a retrospective Water Framework Directive Assessment.

Within each appendix cross-referencing highlights the documents where related appraisals are presented. The broad relationships between the appendices are as below:



E1 Introduction

This Appendix summarises the features and issues identified around the Medway Estuary and Swale, together with the setting and evaluation of objectives. The information in this table is supported by **Appendix D SEA Environmental Baseline Report**, which provide further details on each of the features.

The approach promoted by Defra guidance uses the principles of the Quality of Life Capital (QLC) approach, which was developed jointly by the Countryside Agency, Natural England, English Heritage and the Environment Agency to address environmental issues in decision-making. There is a focus on the services (termed as benefits) that a feature (e.g. a harbour) contributes to a location, a region or the nation, which helps clarify why that feature on the shoreline may or may not require protection. The understanding of why a feature is important to stakeholders, either locally or nationally also helps ensure the process is transparent.

All the information has been recorded in a table to ensure clarity and transparency.

E2 Methodology

E2.1 IDENTIFICATION OF ISSUES AND OBJECTIVES

The Issues and Objectives Table is populated using information from the SEA Environmental Baseline Report (**Appendix D**) and refined through consultation with the Client Steering Group (CSG), stakeholders and Elected Members (**Appendix B**).

E2.2 OBJECTIVE EVALUATION

The relative importance of the objectives was been evaluated through answering a series of questions:

- At what scale is the benefit important?
- How important are the benefits to the people who use them?
- Is there enough of the benefit?
- Can the benefit be substituted?

Again, this information has been derived from the SEA Environmental Baseline Report and has also involved the input of the CSG, Key Stakeholder Forum (KSF) and Elected Members Forum (EMF).

E2.3 EXPLANATION OF COLUMN HEADINGS

(a) Feature

This is defined as something tangible that provides a benefit or service to society in one form or another. The feature will relate to the benefit(s) that it provides and SMP Policy will address objectives that relate to a feature.

Examples of aspects that do not constitute a QLC feature include:

- A cliff for supplying sediment to a beach (although the cliff may be a feature if it supports habitats, for example); and,
- A seawall that protects a residential area (the residential houses are the feature).

Examples of a feature include residential or commercial properties, a heritage site, etc.

(b) Issues associated with feature

This column identifies all issues associated with that feature. Issues may occur where either a feature is at risk from flooding or erosion or where management intervention could impact upon a feature.

Examples include:

- Potential loss of housing through erosion;
- Potential for coastal works to impact upon asset; and,
- Potential loss of or damage to services and roads through erosion.

(c) Affect Policy?

This states whether the feature and its associated issues are of direct relevance to policy decisions; although an issue may be deemed to be of flood and coastal defence management relevance, it may still not affect policy e.g. offshore dredging or offshore fisheries.

Note that where an issue is considered not to affect policy, no objective, rank, etc are set for that issue.

(d) Why is the feature important?

For those features and issues which are deemed to affect policy, this column identifies the tangible benefits of the feature, such as:

- Human/property/transportation/community cohesion;
- Critical habitat /conservation importance;
- Historical value;
- Landscape value;
- Educational resource/value; and,
- Supply of economic growth opportunities (ports/marinas/tourism /recreation/industry).

It should be noted, however, that 'Coastal / estuarine processes' do not constitute a benefit, for example, sediment transport maintaining a beach that provides both a natural defence to a village and a recreational amenity would not be considered a benefit; instead the benefits would be the residential provision of the village and recreation.

(e) Who benefits?

This column identifies the key beneficiaries. The categories include:

- Individuals – i.e. not organisations;
- Local - residents or people from an immediate catchment area (fishermen/business etc);
- Regional Users – regionally important stakeholders (e.g. Wildlife Trust, County Council, Port Authority, etc);
- National Users.

(f) Objective

For each feature, where potential flood or coastal erosion related issues have been identified, a specific objective has been defined, based on the relevant specific issue and the benefits provided by that feature.

(g) Scale? - At which scale is the benefit important?

This identifies the area over which the benefit has an impact of some significance, and has used the following classes:

International	Beyond the UK
National	UK
Regional	The South East

Sub-regional	Kent and Medway; however for major coastal towns this is the town envelope and the immediate surrounding rural area.
Local	The immediate vicinity of the features in question. For coastal villages and other rural communities this includes that part of the county, and may include the nearest town that provides main services such as shops, banking, leisure and recreational facilities.

(h) Importance? – How important are the benefits to the people who use them?

This considers the scale of the impact should that feature/ benefit be lost tomorrow and has used the following classes:

High	Loss tomorrow would significantly influence stakeholder daily life/ work/ management practices (significance change to socio-economic status or quality of life)
Medium	Loss tomorrow would partially influence stakeholder daily life/ work/ management practices (moderate change to socio-economic status or quality of life)
Low	Loss tomorrow would have little or no influence on stakeholder daily life/ work/ management practices

(i) Enough? - Is there enough of the benefit?

This identifies how scarce or rare a benefit is, at the scale at which it is important. As part of this, consideration needs to be given to whether other sites/ areas can be found where this benefit is provided (e.g. inland or further along the coast etc).

(j) Replace? - Can the benefit be substituted?

This identifies whether the benefit could be replaced at the appropriate scale and considers the practicability of substitution; some benefits can be substituted whilst others can not, for example it may be possible to divert a threatened footpath and preserve the recreational benefit that it provides whilst ancient woodlands are impossible to recreate within the timescale of the SMP.

Although the SMP can address whether it is technically possible to replace a benefit, it is not necessary to define whether it is operationally possible (i.e. the new site secured and the necessary funding in place), as this assessment is only used to evaluate the objective, not appraise policy.

E2.4 OBJECTIVE CLASSIFICATION

Using the answers to the above questions (g) to (j), the objectives have been broadly classified by theme and each feature/ benefit has been attributed a rank, which includes a letter and a number. The letter refers to the theme (see list below) and the number defines the relative significance, with 1 being the highest rank in each theme.

As it has been recognised that it is not possible to compare different types of features, e.g. environmental site with housing, the ranking is specific to the following theme:

- Housing and Community facilities (H);
- Commercial and agricultural property (C);

- Infrastructure (roads, pipelines etc.) (F);
- Natural environment (E);
- Heritage (G);
- Landscape (L); and,
- Recreation (R).

E3 The Issues and Objectives Table

The following tables assess the issues and objectives for the following frontages:

- North of Grain Village to Middle Stoke;
- Middle Stoke to Lower Upnor;
- Lower Upnor to Medway (M2) Bridge;
- Medway (M2) Bridge to north of Snodland (west bank);
- Snodland to Allington Lock;
- Allington Lock to Medway (M2) Bridge (east bank);
- Medway (M2) Bridge to east of St Mary's Island;
- St Mary's Island to west of Motney Hill;
- Motney Hill to Kingsferry Bridge;
- Kingsferry Bridge to Faversham Creek;
- Shell Ness to Kingsferry Bridge; and,
- Kingsferry Bridge to Sheerness.

Note that the issues and objectives for the Medway Islands are included within the relevant frontages listed above.

Feature	Issues associated with Feature	Affect Policy ?	Why is the feature important?	Who benefits?	Objective ¹	Scale?	Importance?	Enough?	Replace ?	Rank
LOCATION: NORTH OF GRAIN VILLAGE TO MIDDLE STOKE										
Residential properties on edge of Grain village	<ul style="list-style-type: none"> - potential loss of life or injury through flooding - potential loss of/ damage to housing through flooding - devaluation of properties at risk and neighbouring property - anxiety and stress to owners and occupiers at risk - impact on local community - potential impacts from flood risk management works e.g. disturbance, impact on views, damage to property 	Yes	<ul style="list-style-type: none"> - homes for people. Represents substantial investment for individual property owners - loss of existing housing stock, alternatives would have to be found by individuals - potential impacts on community structure 	<ul style="list-style-type: none"> - Individual residents and local community 	Prevent loss/ damage to residential properties from flooding or flood risk management works (Population and Human Health)	Local	High	No	Yes	H2
Residential properties in Lower Stoke village	<ul style="list-style-type: none"> - potential loss of life or injury through flooding - potential loss of/ damage to housing through flooding 	Yes	<ul style="list-style-type: none"> - homes for people. Represents substantial investment for 	<ul style="list-style-type: none"> - Individual residents and local community 	Prevent loss/ damage to residential properties from flooding or flood	Local	High	No	Yes	H2

¹ The SEA Receptor to which the objective relates is shown in brackets below the objective.

Feature	Issues associated with Feature	Affect Policy ?	Why is the feature important?	Who benefits?	Objective ¹	Scale?	Importance?	Enough?	Replace ?	Rank
	<ul style="list-style-type: none"> - devaluation of properties at risk and neighbouring property - anxiety and stress to owners and occupiers at risk - impact on local community - potential impacts from flood risk management works e.g. disturbance, impact on views, damage to property 		<ul style="list-style-type: none"> - individual property owners - loss of existing housing stock, alternatives would have to be found by individuals - potential impacts on community structure 		risk management works (Population and Human Health)					
Commercial properties – businesses in Lower Stoke village	<ul style="list-style-type: none"> - potential loss of life or injury through flooding - potential loss of/ damage to businesses through flooding - devaluation of properties at risk and neighbouring property - anxiety and stress to owners at risk - impact on local community - potential impacts from flood risk management works e.g. disturbance, damage 	Yes	<ul style="list-style-type: none"> - investment of individual owners - contribution to local economy and employment - contribution to local community 	<ul style="list-style-type: none"> - Individual business owners, local community and visitors 	Prevent loss/ damage to commercial properties from flooding or flood risk management works (Population and Human Health)	Local	High	No	Yes	C3

Feature	Issues associated with Feature	Affect Policy ?	Why is the feature important?	Who benefits?	Objective ¹	Scale?	Importance?	Enough?	Replace ?	Rank
	to property									
Community facilities in Lower Stoke village (such as churches, pubs, shops, schools, village halls)	<ul style="list-style-type: none"> - potential loss of life or injury through flooding - potential loss of/ damage to facilities through flooding - impact on local community - potential impacts from flood risk management works e.g. disruption, damage to facilities 	Yes	<ul style="list-style-type: none"> - contribution to local community 	<ul style="list-style-type: none"> - Local community and visitors 	Prevent loss/ damage to community facilities from flooding or flood risk management works (Population and Human Health, Material Assets)	Local	High	No	Yes	H2
Residential properties on edge of Middle Stoke village	<ul style="list-style-type: none"> - potential loss of life or injury through flooding - potential loss of/ damage to housing through flooding - devaluation of properties at risk and neighbouring property - anxiety and stress to owners and occupiers at risk - impact on local community - potential impacts from flood risk management works e.g. disturbance, impact on 	Yes	<ul style="list-style-type: none"> - homes for people. Represents substantial investment for individual property owners - loss of existing housing stock, alternatives would have to be found by individuals - potential impacts on community 	<ul style="list-style-type: none"> - Individual residents and local community 	Prevent loss/ damage to residential properties from flooding or flood risk management works (Population and Human Health)	Local	High	No	Yes	H2

Feature	Issues associated with Feature	Affect Policy ?	Why is the feature important?	Who benefits?	Objective ¹	Scale?	Importance?	Enough?	Replace ?	Rank
	views, damage to property		structure							
Major infrastructure e.g. A228, local roads, bridges, railway line, services and communications, electricity pylons, also pipelines and jetties in estuary	- potential loss/ damage/ disruption to infrastructure through flooding	Yes	- essential links for communities, businesses and industry	- Local, regional and national community	Prevent loss/ damage/ disruption to infrastructure from flooding (Infrastructure)	National	High	No	Yes	F2
Structures/ ancillary infrastructure abandoned through flooding	- Health and Safety and environmental hazards caused by flooding/ abandonment of property and associated services	No								
Agricultural Land	- potential loss of land, farms and farm buildings through flooding - impacts on farm businesses and viability - devaluation of land at risk - anxiety and stress to owners at risk - change in achievement of	Yes	- represents substantial investment for individual owners - loss of existing agricultural land stock, mainly Grade 4 - economy/ employment	- Individual farmers and employees - Local community - National and international community in terms of	Prevent loss/ reduced potential of agricultural land from flooding (Land Use)	Local	High	Yes	Yes	C3

Feature	Issues associated with Feature	Affect Policy ?	Why is the feature important?	Who benefits?	Objective ¹	Scale?	Importance?	Enough?	Replace ?	Rank
	prescriptions for agri-environment payments		through farming - contribution to local community - much of the area is within the North Kent Marshes Environmental Sensitive Area (ESA) and is managed for wildlife, landscape and heritage benefit. Agri-environment payments are made to farmers.	management benefits for designated wildlife sites						
Intertidal Habitat	- potential loss of area through coastal squeeze (rising sea levels and hard defences preventing migration inland) - potential loss/ damage caused by flood risk management works	Yes	- Intertidal area east of Grain village is part of the South Thames Estuary and Marshes SSSI, SPA and Ramsar site (habitat for birds, plants and invertebrates)	- Local, national and international community	Promote biodiversity opportunities and avoid net loss of intertidal habitat and associated species from coastal squeeze and flood risk management works	International	High	No	Yes	E1

Feature	Issues associated with Feature	Affect Policy ?	Why is the feature important?	Who benefits?	Objective ¹	Scale?	Importance?	Enough?	Replace ?	Rank
			<ul style="list-style-type: none"> - Intertidal area on the southern shoreline is part of the Medway Estuary and Marshes SSSI, SPA and Ramsar site (habitat for birds, plants and invertebrates) - Intertidal habitats are UK BAP priority habitats - Intertidal habitats support rare species and are important for fish - Recreational activities e.g. Wildfowling 		(Biodiversity, flora and fauna)					
Coastal Grazing marsh habitat (including habitat on the flood defence embankments)	<ul style="list-style-type: none"> - potential loss of freshwater/ brackish habitat through flooding - potential opportunity to return to intertidal habitat - potential loss/ damage 	Yes	<ul style="list-style-type: none"> - coastal grazing marsh is part of the Medway Estuary and Marshes SSSI, SPA and Ramsar site 	<ul style="list-style-type: none"> - Local, national and international community 	Promote biodiversity opportunities and avoid net loss of coastal grazing marsh and associated species	International	High	No	Yes	E2

Feature	Issues associated with Feature	Affect Policy ?	Why is the feature important?	Who benefits?	Objective ¹	Scale?	Importance?	Enough?	Replace ?	Rank
	caused by flood risk management works		(birds, plants and invertebrates in fields and ditches and on flood defence embankments) - coastal grazing marsh is a UK BAP priority habitat and hosts protected and BAP priority species e.g. water voles		from flooding and flood risk management works (Biodiversity, flora and fauna)					
Former oil refinery site	- potential loss of life or injury through flooding - potential loss of/ damage to site through flooding - potential impacts on regeneration objectives for local area and Thames Gateway - need to accommodate space for flood defences including future improvements and environmental mitigation/ enhancement	Yes	- largest strategic economic regeneration site in the Thames Gateway - contribution to economy and employment	- Local, Regional and National community	Prevent loss/ damage/ disruption to site from flooding (Land Use, Material Assets, Infrastructure)	National	High	No	No	C1

Feature	Issues associated with Feature	Affect Policy ?	Why is the feature important?	Who benefits?	Objective ¹	Scale?	Importance?	Enough?	Replace ?	Rank
Grain Power station	<ul style="list-style-type: none"> - potential loss of life or injury through flooding - potential loss of/ damage/ disruption to site through flooding 	Yes	<ul style="list-style-type: none"> - Contribution to economy and employment, including through commercial use of River Medway - Investment of owners 	<ul style="list-style-type: none"> - Local, Regional and National Community 	Prevent loss/ damage/ disruption to Grain Power station from flooding (Land Use, Material Assets, Infrastructure)	National	High	No	No	C1
Thamesport	<ul style="list-style-type: none"> - potential loss of life or injury through flooding - potential loss of/ damage/ disruption to site through flooding - potential impacts on associated business/ industries - potential impacts on deep water berths caused by changes in estuary system 	Yes	<ul style="list-style-type: none"> - Thamesport is one of Britain's biggest container ports, major contribution to commercial use of the River Medway - investment of owners - contribution to economy and employment 	<ul style="list-style-type: none"> - Local, Regional, National and International Community 	Prevent loss/ damage/ disruption to Thamesport from flooding (Land Use, Material Assets, Infrastructure)	International	Medium	No	No	F1
Grain Pit	<ul style="list-style-type: none"> - potential loss of habitat through flooding - potential loss/ damage caused by flood risk 	Yes	<ul style="list-style-type: none"> - Grain pit is a Site of Nature Conservation Importance. Reedbed and 	<ul style="list-style-type: none"> - Local Community 	Promote biodiversity opportunities and prevent loss/ damage to Grain	Local	Medium	No	Yes	E4

Feature	Issues associated with Feature	Affect Policy ?	Why is the feature important?	Who benefits?	Objective ¹	Scale?	Importance?	Enough?	Replace ?	Rank
	management measures		open water habitats are present in the former pit. There are also areas of scrub and rough grassland		Pit from flooding and flood risk management works (Biodiversity, flora and fauna)					
Coastal artillery defences on the Isle of Grain	<ul style="list-style-type: none"> - potential loss through flooding - potential loss/ damage caused by flood risk management measures 	Yes	<ul style="list-style-type: none"> - The coastal artillery defences on the Isle of Grain are a Scheduled Ancient Monument and part of wider historic environment fortification features - Heritage features contribute to the character of an area and are enjoyed by local community, they can also attract visitors to the area and therefore benefit 	<ul style="list-style-type: none"> - Local and national community 	Prevent loss/ damage to SAM from flooding and flood risk management works Seek opportunities to enhance features where appropriate (Cultural Heritage, including architectural and archaeological heritage)	National	High	No	No	G2

Feature	Issues associated with Feature	Affect Policy ?	Why is the feature important?	Who benefits?	Objective ¹	Scale?	Importance?	Enough?	Replace ?	Rank
			the local economy							
Non-statutory known and unknown heritage	<ul style="list-style-type: none"> - potential loss through flooding - potential loss/ damage caused by flood risk management measures 	Yes	<ul style="list-style-type: none"> - The area has a high potential for heritage value 	<ul style="list-style-type: none"> - Local and national community 	<p>Prevent loss/ damage to heritage from flooding and flood risk management works or implement appropriate mitigation measures, including preservation of evidence by record</p> <p>Seek opportunities to enhance features where appropriate</p> <p>(Cultural Heritage, including architectural and archaeological heritage)</p>	Local	Medium	No	No	G4
Grain Village Foreshore	<ul style="list-style-type: none"> - potential loss/ damage through flooding and 	Yes	<ul style="list-style-type: none"> - public open space and 	<ul style="list-style-type: none"> - Local community 	Prevent loss/ damage/ disruption	Local	Medium	No	No	R3

Feature	Issues associated with Feature	Affect Policy ?	Why is the feature important?	Who benefits?	Objective ¹	Scale?	Importance?	Enough?	Replace ?	Rank
	<ul style="list-style-type: none"> coastal squeeze - potential loss/ damage/ disruption caused by flood risk management measures 		<ul style="list-style-type: none"> associated informal recreation is important for quality of life 	<ul style="list-style-type: none"> and visitors 	<ul style="list-style-type: none"> to public open space from flooding and flood risk management works Seek opportunities to enhance features where appropriate (Population, Human Health, Land Use) 					
Landscape of the estuary, marshes, village and industrial area, including existing defences	<ul style="list-style-type: none"> - potential degradation through flooding and associated impacts - potential adverse impacts caused by flood risk management measures e.g. construction of large sea defences 	Yes	<ul style="list-style-type: none"> - an attractive place to live and visit is important for quality of life and may bring visitors to the area which will have economic benefits - The grazing marsh frontages are designated as Undeveloped Coast and are 	<ul style="list-style-type: none"> - Local community and visitors 	<ul style="list-style-type: none"> Prevent degradation of landscape quality and visual amenity from flooding and flood risk management works Ensure consideration of existing defences on landscape and heritage grounds 	Sub-regional	High	No	No	L2

Feature	Issues associated with Feature	Affect Policy ?	Why is the feature important?	Who benefits?	Objective ¹	Scale?	Importance?	Enough?	Replace ?	Rank
			part of the North Kent Marshes Special Landscape Area - Defence structures are part of the landscape character and may have heritage value as are part of flood defence and land use history		Seek opportunities to enhance features where appropriate (Landscape)					
Facilities for recreation on and near the river, and associated business, including Medway micro lights and moorings in intertidal areas	- potential loss/ damage/ disruption to facilities and businesses through flooding - potential loss/ damage/ disruption caused by flood risk management measures	Yes	- water based recreation on the River Medway is regionally significant - Recreation is important for quality of life - Facilities can bring visitors to the area and therefore benefit the local economy	- Local community and visitors	Prevent loss/ damage/ disruption to recreation and associated business from flooding and flood risk management works Seek opportunities to enhance features where appropriate	Local	High	No	Yes	R3

Feature	Issues associated with Feature	Affect Policy ?	Why is the feature important?	Who benefits?	Objective ¹	Scale?	Importance?	Enough?	Replace ?	Rank
			- Investment for individual owners		(Population, Land Use, Material Assets)					
Public Footpath along flood defence embankments south of A228.	<ul style="list-style-type: none"> - potential loss or disruption through flooding - potential loss or disruption caused by flood risk management measures 	Yes	- having access to the countryside and informal recreation (Walking and cycling) is important for quality of life	- Local community and visitors	<p>Prevent loss/ disruption to footpath from flooding and flood risk management works</p> <p>Seek opportunities to enhance features where appropriate</p> <p>(Population, Land Use)</p>	Local	Medium	No	No	R3
LOCATION: MIDDLE STOKE TO LOWER UPNOR										
Residential properties in and in vicinity of Hoo St Werburgh	<ul style="list-style-type: none"> - potential loss of life or injury through flooding - potential loss of/ damage to housing through flooding 	Yes	- homes for people. Represents substantial investment for	- Individual residents and local community	Prevent loss/ damage to residential properties from flooding or flood	Local	High	No	Yes	H2

Feature	Issues associated with Feature	Affect Policy ?	Why is the feature important?	Who benefits?	Objective ¹	Scale?	Importance?	Enough?	Replace ?	Rank
	<ul style="list-style-type: none"> - devaluation of properties at risk and neighbouring property - anxiety and stress to owners and occupiers at risk - impact on local community - potential impacts from flood risk management works e.g. disturbance, impact on views, damage to property 		<ul style="list-style-type: none"> - individual property owners - loss of existing housing stock, alternatives would have to be found by individuals - potential impacts on community structure 		risk management works (Population and Human Health)					
Commercial properties – businesses in Hoo St Werburgh	<ul style="list-style-type: none"> - potential loss of life or injury through flooding - potential loss of/ damage to businesses through flooding - devaluation of properties at risk and neighbouring property - anxiety and stress to owners at risk - impact on local community - potential impacts from flood risk management works e.g. disturbance, damage 	Yes	<ul style="list-style-type: none"> - investment of individual owners - contribution to local economy and employment - contribution to local community 	<ul style="list-style-type: none"> - Individual business owners, local community and visitors 	Prevent loss/ damage to commercial properties from flooding or flood risk management works (Population, Material Assets)	Local	High	No	Yes	C3

Feature	Issues associated with Feature	Affect Policy ?	Why is the feature important?	Who benefits?	Objective ¹	Scale?	Importance?	Enough?	Replace ?	Rank
	to property									
Community facilities in Hoo St Werburgh (such as churches, pubs, shops, schools, village halls)	<ul style="list-style-type: none"> - potential loss of life or injury through flooding - potential loss of/ damage to facilities through flooding - impact on local community - potential impacts from flood risk management works e.g. disruption, damage to facilities 	Yes	<ul style="list-style-type: none"> - contribution to local community 	<ul style="list-style-type: none"> - Local community and visitors 	Prevent loss/ damage to community facilities from flooding or flood risk management works (Population and Human Health)	Local	High	No	Yes	H2
Kingsnorth Power Station and Industrial and Commercial Areas	<ul style="list-style-type: none"> - potential loss of life or injury through flooding - potential loss of/ damage/ disruption to site through flooding 	Yes	<ul style="list-style-type: none"> - Contribution to economy and employment, including through commercial use of River Medway - Investment of owners 	<ul style="list-style-type: none"> - Local, Regional and National Community 	Prevent loss/ damage/ disruption to Grain Power station from flooding (Land Use, Material Assets, Infrastructure)	National	High	No	No	C1
Major infrastructure e.g. local roads, bridges, railway line, services and communications, electricity pylons	<ul style="list-style-type: none"> - potential loss/ damage/ disruption to infrastructure through flooding 	Yes	<ul style="list-style-type: none"> - essential links for communities, businesses and industry 	<ul style="list-style-type: none"> - Local, regional and national community 	Prevent loss/ damage/ disruption to infrastructure from flooding (Infrastructure)	National	High	No	Yes	F2

Feature	Issues associated with Feature	Affect Policy ?	Why is the feature important?	Who benefits?	Objective ¹	Scale?	Importance?	Enough?	Replace ?	Rank
Structures/ ancillary infrastructure abandoned through flooding	- Health and Safety and environmental hazards caused by flooding/ abandonment of property and associated services	No								
Public Footpaths, including along flood defence embankments and shoreline (Saxon Shore Way)	- potential loss or disruption through flooding - potential loss or disruption caused by flood risk management measures	Yes	- having access to the countryside and informal recreation (walking and cycling) is important for quality of life - The Saxon Shore Way is a long distance footpath between Gravesend and Rye	- Local and regional community and visitors	Prevent loss/ disruption to footpath from flooding and flood risk management works Seek opportunities to enhance features where appropriate (Population, Land use)	Local	Medium	No	Yes	R3
Hoo Island dredging disposal site	- potential loss/ damage through flooding - potential loss/ damage through erosion of bunds causing material to re-enter estuary system	Yes	- disposal site for material dredged from the estuary	- Local community and users of the navigation	Prevent loss/ damage to Hoo Island from flooding or erosion of bunds	Sub-regional	Medium	No	Yes	C3

Feature	Issues associated with Feature	Affect Policy ?	Why is the feature important?	Who benefits?	Objective ¹	Scale?	Importance?	Enough?	Replace ?	Rank
					(Land Use, Material Assets, Infrastructure)					
Hoo Fort and Darnet Fort	<ul style="list-style-type: none"> - potential loss through flooding - potential loss/ damage caused by flood risk management measures 	Yes	<ul style="list-style-type: none"> - Hoo Fort and Darnet Fort are Scheduled Ancient Monuments - A stretch of Hoo Island is defended by hulks - Heritage features contribute to the character of an area and are enjoyed by local community, they can also attract visitors to the area and therefore benefit the local economy 	<ul style="list-style-type: none"> - Local and national community 	Prevent loss/ damage to SAMs from flooding and flood risk management works (Cultural Heritage, including architectural and archaeological heritage)	National	High	No	No	G2
Cockham Wood Fort	<ul style="list-style-type: none"> - potential loss through flooding/ erosion - potential loss/ damage 	Yes	<ul style="list-style-type: none"> - Cockham Wood Fort is a Scheduled Ancient 	<ul style="list-style-type: none"> - Local and national community 	Prevent loss/ damage to SAM from flooding/ erosion and risk	National	High	No	No	G2

Feature	Issues associated with Feature	Affect Policy ?	Why is the feature important?	Who benefits?	Objective ¹	Scale?	Importance?	Enough?	Replace ?	Rank
	caused by risk management measures		Monument		management works (Cultural Heritage, including architectural and archaeological heritage)					
Non-statutory known and unknown heritage	<ul style="list-style-type: none"> - potential loss through flooding - potential loss/ damage caused by flood risk management measures 	Yes	<ul style="list-style-type: none"> - The area has a high potential for heritage value 	<ul style="list-style-type: none"> - Local and national community 	Prevent loss/ damage to heritage from flooding and flood risk management works or implement appropriate mitigation measures, including preservation of evidence by record Seek opportunities to enhance features where appropriate (Cultural Heritage, including	Local	Medium	No	No	G4

Feature	Issues associated with Feature	Affect Policy ?	Why is the feature important?	Who benefits?	Objective ¹	Scale?	Importance?	Enough?	Replace ?	Rank
					architectural and archaeological heritage)					
Facilities for recreation on the river, and associated business, including marina (sailing and windsurfing), Medway Yacht Club, Arethusa Venture Centre, access to foreshore and river (including for fishing)	<ul style="list-style-type: none"> - potential loss/ damage/ disruption to facilities and businesses through flooding - potential loss/ damage/ disruption caused by flood risk management measures 	Yes	<ul style="list-style-type: none"> - water based recreation on the River Medway is regionally significant - Recreation is important for quality of life - Facilities can bring visitors to the area and therefore benefit the local economy - Investment for individual owners 	<ul style="list-style-type: none"> - Local, regional community and visitors 	<p>Prevent loss/ damage/ disruption to recreation and associated business from flooding and flood risk management works</p> <p>Seek opportunities to enhance features where appropriate</p> <p>(Population, Land Use, Infrastructure)</p>	Regional	High	No	No	R2
Intertidal Habitat (including saltmarsh islands)	<ul style="list-style-type: none"> - potential loss of area through coastal squeeze (rising sea levels and hard defences preventing migration inland) - loss of islands due to sea level rise 	Yes	<ul style="list-style-type: none"> - Intertidal area is part of the Medway Estuary and Marshes SSSI, SPA and Ramsar site (habitat for birds, plants and 	<ul style="list-style-type: none"> - Local, national and international community 	<p>Promote biodiversity opportunities and avoid net loss of intertidal habitat and associated species from coastal squeeze</p>	International	High	No	Yes	E1

Feature	Issues associated with Feature	Affect Policy ?	Why is the feature important?	Who benefits?	Objective ¹	Scale?	Importance?	Enough?	Replace ?	Rank
	<ul style="list-style-type: none"> - potential loss/ damage caused by flood risk management works 		<ul style="list-style-type: none"> - invertebrates) - Intertidal habitats are UK BAP priority habitats - Intertidal habitats support rare species and are important for fish - Recreational activities e.g. Wildfowling on the Intertidal habitat 		<p>and flood risk management works</p> <p>(Biodiversity, flora and fauna)</p>					
Coastal Grazing marsh habitat (including habitat on the flood defence embankments)	<ul style="list-style-type: none"> - potential loss of freshwater/ brackish habitat through flooding - potential opportunity to return to intertidal habitat - potential loss/ damage caused by flood risk management works 	Yes	<ul style="list-style-type: none"> - coastal grazing marsh is part of the Medway Estuary and Marshes SSSI, SPA and Ramsar site (birds, plants and invertebrates in fields and ditches and on flood defence embankments) - coastal grazing marsh is a UK 	<ul style="list-style-type: none"> - Local, national and international community 	<p>Promote biodiversity opportunities and avoid net loss of coastal grazing marsh and associated species from flooding and flood risk management works</p> <p>(Biodiversity, flora and fauna)</p>	International	High	No	Yes	E2

Feature	Issues associated with Feature	Affect Policy ?	Why is the feature important?	Who benefits?	Objective ¹	Scale?	Importance?	Enough?	Replace ?	Rank
			BAP priority habitat and hosts protected and BAP priority species e.g. water voles							
Tower Hill to Cockham Wood	<ul style="list-style-type: none"> - Potential loss/ damage to geological features through erosion risk management works - Potential loss/ damage to woodland habitat through erosion and risk management works 	Yes	- Tower Hill to Cockham Wood is a SSSI, notified for geological and biological features	- Local and national community	Promote biodiversity opportunities and prevent loss/ damage to designated site from erosion/ risk management works	National	High	No	No	E2
Landscape of the estuary, marshes, villages and industrial area, including existing defences	<ul style="list-style-type: none"> - potential degradation through flooding and associated impacts - potential adverse impacts caused by flood risk management measures e.g. construction of large sea defences 	Yes	<ul style="list-style-type: none"> - an attractive place to live and visit is important for quality of life and may bring visitors to the area which will have economic benefits - The grazing marsh frontages are designated as Undeveloped Coast and are 	- Local community and visitors	<p>Prevent degradation of landscape quality and visual amenity from flooding and flood risk management works</p> <p>Ensure consideration of existing defences on landscape and heritage grounds</p>	Sub-regional	High	No	No	L2

Feature	Issues associated with Feature	Affect Policy ?	Why is the feature important?	Who benefits?	Objective ¹	Scale?	Importance?	Enough?	Replace ?	Rank
			part of the North Kent Marshes Special Landscape Area - Defence structures are part of the landscape character and may have heritage value as are part of flood defence and land use history		Seek opportunities to enhance features where appropriate (Landscape)					
LOCATION: LOWER UPNOR TO MEDWAY (M2) BRIDGE										
Residential properties at Frindsbury and Strood	<ul style="list-style-type: none"> - potential loss of life or injury through flooding - potential loss of/ damage to housing through flooding - devaluation of properties at risk and neighbouring property - anxiety and stress to owners and occupiers at 	Yes	<ul style="list-style-type: none"> - homes for people. Represents substantial investment for individual property owners - loss of existing housing stock, alternatives 	<ul style="list-style-type: none"> - Individual residents and local community 	Prevent loss/ damage to residential properties from flooding or flood risk management works (Population and Human Health)	Local	High	No	Yes	H2

Feature	Issues associated with Feature	Affect Policy ?	Why is the feature important?	Who benefits?	Objective ¹	Scale?	Importance?	Enough?	Replace ?	Rank
	<ul style="list-style-type: none"> - risk - impact on local community - potential impacts from flood risk management works e.g. disturbance, impact on views, damage to property 		<ul style="list-style-type: none"> - would have to be found by individuals - potential impacts on community structure 							
Commercial properties – including businesses and industrial areas on Medway City Estate (including commercial wharves) and along river frontage	<ul style="list-style-type: none"> - potential loss of life or injury through flooding - potential loss of/ damage to businesses through flooding - devaluation of properties at risk and neighbouring property - anxiety and stress to owners at risk - impact on local community - potential impacts from flood risk management works e.g. disturbance, damage to property 	Yes	<ul style="list-style-type: none"> - investment of individual owners - contribution to local economy and employment - contribution to local community 	<ul style="list-style-type: none"> - Individual business owners, local community and visitors 	Prevent loss/ damage to commercial properties from flooding or flood risk management works (Population, Material Assets and Land Use)	Sub-regional	High	No	Yes	C2
Community facilities at Frindsbury and Strood (such as churches, pubs,	<ul style="list-style-type: none"> - potential loss of life or injury through flooding - potential loss of/ damage to facilities through flooding 	Yes	<ul style="list-style-type: none"> - contribution to local community 	<ul style="list-style-type: none"> - Local community and visitors 	Prevent loss/ damage to community facilities from flooding or flood risk	Local	High	No	Yes	H2

Feature	Issues associated with Feature	Affect Policy ?	Why is the feature important?	Who benefits?	Objective ¹	Scale?	Importance?	Enough?	Replace ?	Rank
shops, schools, village halls)	<ul style="list-style-type: none"> - impact on local community - potential impacts from flood risk management works e.g. disruption, damage to facilities 				management works (Population and Human Health)					
Major infrastructure e.g. Medway Tunnel, local roads, bridges, main railway line and station, services and communications	<ul style="list-style-type: none"> - potential loss/ damage/ disruption to infrastructure through flooding 	Yes	<ul style="list-style-type: none"> - essential links for communities, businesses and industry 	<ul style="list-style-type: none"> - Local and regional community 	Prevent loss/ damage/ disruption to infrastructure from flooding (Infrastructure)	Regional	High	No	Yes	F2
Structures/ ancillary infrastructure abandoned through flooding	<ul style="list-style-type: none"> - Health and Safety and environmental hazards caused by flooding/ abandonment of property and associated services 	No								
Facilities for recreation on the river, and associated business, including Strood Pier, Strood Sailing Club, moorings and slipways, access to foreshore and river	<ul style="list-style-type: none"> - potential loss/ damage/ disruption to facilities and businesses through flooding - potential loss/ damage/ disruption caused by flood risk management measures 	Yes	<ul style="list-style-type: none"> - water based recreation on the River Medway is regionally significant - Recreation is important for quality of life - Facilities can 	<ul style="list-style-type: none"> - Local, regional community and visitors 	Prevent loss/ damage/ disruption to recreation and associated business from flooding and flood risk management works	Regional	High	No	No	R2

Feature	Issues associated with Feature	Affect Policy ?	Why is the feature important?	Who benefits?	Objective ¹	Scale?	Importance?	Enough?	Replace ?	Rank
(including for fishing) Also Medway Valley Leisure Park (cinema/ restaurant complex)			bring visitors to the area and therefore benefit the local economy - Investment for individual owners		Seek opportunities to enhance features where appropriate (Population, Land Use, Infrastructure)					
Public Footpaths, including Saxon Shore Way and riverside walkway in urban areas	- potential loss or disruption through flooding - potential loss or disruption caused by flood risk management measures	Yes	- having access to the countryside and informal recreation (walking and cycling) is important for quality of life - The Saxon Shore Way is a long distance footpath between Gravesend and Rye	- Local and regional community and visitors	Prevent loss/ disruption to footpath from flooding and flood risk management works Seek opportunities to enhance features where appropriate (Population and Land Use)	Local	Medium	No	Yes	R3
Tower Hill to Cockham Wood	- Potential loss/ damage to geological features through erosion risk management	Yes	- Tower Hill to Cockham Wood is a SSSI,	- Local and national	Promote biodiversity opportunities and	National	High	No	No	E2

Feature	Issues associated with Feature	Affect Policy ?	Why is the feature important?	Who benefits?	Objective ¹	Scale?	Importance?	Enough?	Replace ?	Rank
	works - Potential loss/ damage to woodland habitat through erosion and risk management works		notified for geological and biological features	community	prevent loss/ damage to designated site from erosion/ risk management works					
Temple Marsh	- potential loss of habitat through flooding - potential loss of intertidal habitat due to coastal squeeze - potential loss/ damage caused by flood risk management measures	Yes	- The River Medway between Cuxton and Temple Marsh is a SNCI. There is a mosaic of grass, scrub, river and intertidal habitats - Public open space and associated informal recreation is important for quality of life	- Local Community and visitors	Promote biodiversity opportunities and net loss of habitats and associated species from flooding and flood risk management works (Soils and Geology, Biodiversity, flora and fauna)	Local	High	No	Yes	E4
Temple Manor, Strood	- potential loss of setting through flooding - potential loss/ damage to setting caused by flood risk management measures	Yes	- Temple Manor is a Scheduled Ancient Monument and part of the national portfolio of historic	- Local and national community	Prevent loss/ damage to SAM from flooding and flood risk management works	National	High	No	No	G2

Feature	Issues associated with Feature	Affect Policy ?	Why is the feature important?	Who benefits?	Objective ¹	Scale?	Importance?	Enough?	Replace ?	Rank
			<p>properties</p> <ul style="list-style-type: none"> - Heritage features contribute to the character of an area and are enjoyed by local community, they can also attract visitors to the area and therefore benefit the local economy 		<p>Seek opportunities to enhance features where appropriate</p> <p>(Cultural Heritage, including architectural and archaeological heritage)</p>					
Upnor Castle	<ul style="list-style-type: none"> - potential loss through flooding - potential loss/ damage caused by flood risk management measures 	Yes	<ul style="list-style-type: none"> - Upnor Castle is a Scheduled Ancient Monument and part of the national portfolio of historic properties, it is included in the proposed World Heritage Site for Chatham Dockyard - Heritage features contribute to the character of an 	<ul style="list-style-type: none"> - Local and national community 	<p>Prevent loss/ damage to SAM from flooding and flood risk management works</p> <p>Seek opportunities to enhance features where appropriate</p> <p>(Cultural Heritage, including architectural and</p>	National	High	No	No	G2

Feature	Issues associated with Feature	Affect Policy ?	Why is the feature important?	Who benefits?	Objective ¹	Scale?	Importance?	Enough?	Replace ?	Rank
			area and are enjoyed by local community, they can also attract visitors to the area and therefore benefit the local economy		archaeological heritage)					
Non-statutory known and unknown heritage	<ul style="list-style-type: none"> - potential loss through flooding - potential loss/ damage caused by flood risk management measures 	Yes	- the area has a high potential for heritage value	- Local and national community	<p>Prevent loss/ damage to heritage from flooding and flood risk management works or implement appropriate mitigation measures, including preservation of evidence by record</p> <p>Seek opportunities to enhance features where appropriate</p> <p>(Cultural Heritage,</p>	Local	Medium	No	No	G4

Feature	Issues associated with Feature	Affect Policy ?	Why is the feature important?	Who benefits?	Objective ¹	Scale?	Importance?	Enough?	Replace ?	Rank
					including architectural and archaeological heritage)					
Landscape of the estuary and urban area	<ul style="list-style-type: none"> - potential degradation through flooding and associated impacts - potential adverse impacts caused by flood risk management measures e.g. construction of large sea defences 	Yes	<ul style="list-style-type: none"> - an attractive place to live and visit is important for quality of life and may bring visitors to the area which will have economic benefits 	<ul style="list-style-type: none"> - Local community and visitors 	Prevent degradation of landscape quality and visual amenity from flooding and flood risk management works Seek opportunities to enhance features where appropriate (Landscape)	Local	High	No	No	L3
LOCATION: MEDWAY (M2) BRIDGE TO NORTH OF SNODLAND (LEFT BANK LOOKING DOWNSTREAM)										
Residential properties on the edge of Halling	<ul style="list-style-type: none"> - potential loss of life or injury through flooding - potential loss of/ damage to housing through flooding 	Yes	<ul style="list-style-type: none"> - homes for people. Represents substantial investment for 	<ul style="list-style-type: none"> - Individual residents and local community 	Prevent loss/ damage to residential properties from flooding or flood	Local	High	No	Yes	H2

Feature	Issues associated with Feature	Affect Policy ?	Why is the feature important?	Who benefits?	Objective ¹	Scale?	Importance?	Enough?	Replace ?	Rank
	<ul style="list-style-type: none"> - devaluation of properties at risk and neighbouring property - anxiety and stress to owners and occupiers at risk - impact on local community - potential impacts from flood risk management works e.g. disturbance, impact on views, damage to property 		<ul style="list-style-type: none"> - individual property owners - loss of existing housing stock, alternatives would have to be found by individuals - potential impacts on community structure 		<p>risk management works</p> <p>(Population and Human Health)</p>					
Commercial properties and industrial areas along river frontage – including near Halling (including commercial wharves) and Cuxton Industrial Estate	<ul style="list-style-type: none"> - potential loss of life or injury through flooding - potential loss of/ damage to businesses through flooding - devaluation of properties at risk and neighbouring property - anxiety and stress to owners at risk - impact on local community - potential impacts from flood risk management works e.g. disturbance, damage 	Yes	<ul style="list-style-type: none"> - investment of individual owners - contribution to local economy and employment - contribution to local community 	<ul style="list-style-type: none"> - Individual business owners, local community and visitors 	<p>Prevent loss/ damage to commercial properties from flooding or flood risk management works</p> <p>(Population, Human Health, Material Assets)</p>	Local	High	No	Yes	C3

Feature	Issues associated with Feature	Affect Policy ?	Why is the feature important?	Who benefits?	Objective ¹	Scale?	Importance?	Enough?	Replace ?	Rank
	to property									
Land at Halling	<ul style="list-style-type: none"> - potential loss of land including terrestrial and freshwater/ brackish habitat through flooding - potential opportunity to return to intertidal habitat - potential loss/ damage caused by flood risk management works 	Yes	<ul style="list-style-type: none"> - Grazing marsh is a priority BAP habitat 	<ul style="list-style-type: none"> - Local community and visitors 	Promote biodiversity opportunities and prevent loss/ damage to habitats and associated species from flooding and flood risk management works (Biodiversity, Flora and Fauna)	Local	High	No	Yes	E4
Major infrastructure e.g. local roads, bridges, main railway line and station, services and communications Also M2 and Channel Tunnel Rail Link bridge piers	<ul style="list-style-type: none"> - potential loss/ damage/ disruption to infrastructure through flooding 	Yes	<ul style="list-style-type: none"> - essential links for communities, businesses and industry 	<ul style="list-style-type: none"> - Local and regional community - M² and CTRL are of international importance 	Prevent loss/ damage/ disruption to infrastructure from flooding (Infrastructure)	Sub-regional	High	No	Yes	F2

Feature	Issues associated with Feature	Affect Policy ?	Why is the feature important?	Who benefits?	Objective ¹	Scale?	Importance?	Enough?	Replace ?	Rank
Structures/ ancillary infrastructure abandoned through flooding	- Health and Safety and environmental hazards caused by flooding/ abandonment of property and associated services	No								
Holborough Marshes	<ul style="list-style-type: none"> - potential loss of terrestrial and freshwater/ brackish habitat through flooding - potential loss of intertidal habitat through coastal squeeze - potential loss/ damage caused by flood risk management works 	Yes	<ul style="list-style-type: none"> - grassland (including flood defence embankments), reedbed and intertidal habitat is part of the Holborough to Burham marshes SSSI - these habitat are UK BAP priority habitats and host protected and BAP priority species e.g. water voles - Holborough marshes is a Kent Wildlife Trust reserve 	- Local and national community	<p>Promote biodiversity opportunities and prevent loss/ damage to habitats and associated species from flooding and flood risk management works</p> <p>(Biodiversity, Flora and Fauna)</p>	National	High	No	Yes	E3
Snodland Meadow	- potential loss of grassland habitat and associated	Yes	- damp, unimproved	- Local community	Promote biodiversity	Local	High	No	Yes	E4

Feature	Issues associated with Feature	Affect Policy ?	Why is the feature important?	Who benefits?	Objective ¹	Scale?	Importance?	Enough?	Replace ?	Rank
	<ul style="list-style-type: none"> species through flooding - potential loss/ damage caused by flood risk management works 		<ul style="list-style-type: none"> pasture is designated as a SNCI 		<ul style="list-style-type: none"> opportunities and prevent loss/ damage to habitats and associated species from flooding and flood risk management works (Biodiversity, Flora and Fauna) 					
Facilities for recreation on the river, and associated business, including Port Medway Marina, The Rochester Queen, allotments at Cuxton, moorings and slipways, access to foreshore and river (including for fishing)	<ul style="list-style-type: none"> - potential loss/ damage/ disruption to facilities and businesses through flooding - potential loss/ damage/ disruption caused by flood risk management measures 	Yes	<ul style="list-style-type: none"> - water based recreation on the River Medway is regionally significant - Recreation is important for quality of life - Facilities can bring visitors to the area and therefore benefit the local economy - Investment for individual owners 	<ul style="list-style-type: none"> - Local, regional community and visitors 	<ul style="list-style-type: none"> Prevent loss/ damage/ disruption to recreation and associated business from flooding and flood risk management works Seek opportunities to enhance features where appropriate (Population, Material Assets, 	Regional	High	No	No	R2

Feature	Issues associated with Feature	Affect Policy ?	Why is the feature important?	Who benefits?	Objective ¹	Scale?	Importance?	Enough?	Replace ?	Rank
					Infrastructure)					
Public Footpaths, including Saxon Shore Way	<ul style="list-style-type: none"> - potential loss or disruption through flooding - potential loss or disruption caused by flood risk management measures 	Yes	<ul style="list-style-type: none"> - having access to the countryside and informal recreation (walking and cycling) is important for quality of life - The Saxon Shore Way is a long distance footpath between Gravesend and Rye 	<ul style="list-style-type: none"> - Local and regional community and visitors 	<p>Prevent loss/ disruption to footpath from flooding and flood risk management works</p> <p>Seek opportunities to enhance features where appropriate</p> <p>(Population, Land Use)</p>	Local	Medium	No	Yes	R3
Bishops Palace at Halling, The visible ruins are set back from the river but the historic access to the site that served the Bishop of Rochester was by boat at what is a historic ferry crossing.	<ul style="list-style-type: none"> - potential loss through flooding - potential loss/ damage caused by flood risk management measures 	Yes	<ul style="list-style-type: none"> - The Bishops Palace is a Scheduled Ancient Monument - Heritage features contribute to the character of an area and are enjoyed by local community, they 	<ul style="list-style-type: none"> - Local and national community 	<p>Prevent loss/ damage to SAM from flooding and flood risk management works</p> <p>Seek opportunities to enhance features where appropriate</p>	National	High	No	No	G2

Feature	Issues associated with Feature	Affect Policy ?	Why is the feature important?	Who benefits?	Objective ¹	Scale?	Importance?	Enough?	Replace ?	Rank
			can also attract visitors to the area and therefore benefit the local economy		(Cultural Heritage, including architectural and archaeological heritage)					
Non-statutory known and unknown heritage	<ul style="list-style-type: none"> - potential loss through flooding - potential loss/ damage caused by flood risk management measures 	Yes	<ul style="list-style-type: none"> - the area has a high potential for heritage value 	<ul style="list-style-type: none"> - Local and national community 	<p>Prevent loss/ damage to heritage from flooding and flood risk management works or implement appropriate mitigation measures, including preservation of evidence by record</p> <p>Seek opportunities to enhance features where appropriate</p>	Local	Medium	No	No	G4

Feature	Issues associated with Feature	Affect Policy ?	Why is the feature important?	Who benefits?	Objective ¹	Scale?	Importance?	Enough?	Replace ?	Rank
					(Cultural Heritage, including architectural and archaeological heritage)					
Landscape of the river valley, including existing flood defences	<ul style="list-style-type: none"> - potential degradation through flooding and associated impacts - potential adverse impacts caused by flood risk management measures e.g. construction of large sea defences 	Yes	<ul style="list-style-type: none"> - an attractive place to live and visit is important for quality of life and may bring visitors to the area which will have economic benefit - the area is part of the Kent Downs AONB and the North Downs Special Landscape Area - Defence structures are part of the landscape character and may have heritage value as 	<ul style="list-style-type: none"> - Local and national community and visitors 	<p>Prevent degradation of landscape quality and visual amenity from flooding and flood risk management works</p> <p>Ensure consideration of existing defences on landscape and heritage grounds</p> <p>Seek opportunities to enhance features where appropriate</p> <p>(Landscape)</p>	National	High	No	No	L1

Feature	Issues associated with Feature	Affect Policy ?	Why is the feature important?	Who benefits?	Objective ¹	Scale?	Importance?	Enough?	Replace ?	Rank
			are part of flood defence and land use history							
LOCATION: SNODLAND TO ALLINGTON LOCK (LEFT BANK LOOKING DOWNSTREAM)										
Residential properties in New Hythe, Lunsford, Leybourne Lakes and Aylesford	<ul style="list-style-type: none"> - potential loss of life or injury through flooding - potential loss of/ damage to housing through flooding - devaluation of properties at risk and neighbouring property - anxiety and stress to owners and occupiers at risk - impact on local community - potential impacts from flood risk management works e.g. disturbance, impact on views, damage to property 	Yes	<ul style="list-style-type: none"> - homes for people. Represents substantial investment for individual property owners - loss of existing housing stock, alternatives would have to be found by individuals - potential impacts on community structure 	<ul style="list-style-type: none"> - Individual residents and local community 	Prevent loss/ damage to residential properties from flooding or flood risk management works (Population and Human Health)	Local	High	No	Yes	H2
Commercial properties – businesses in New Hythe, Lunsford,	<ul style="list-style-type: none"> - potential loss of life or injury through flooding - potential loss of/ damage to businesses through 	Yes	<ul style="list-style-type: none"> - investment of individual owners - contribution to local economy 	<ul style="list-style-type: none"> - Individual business owners, local 	Prevent loss/ damage to commercial properties from	Regional	High	No	Yes	C2

Feature	Issues associated with Feature	Affect Policy ?	Why is the feature important?	Who benefits?	Objective ¹	Scale?	Importance?	Enough?	Replace ?	Rank
Leybourne Lakes and Aylesford	<ul style="list-style-type: none"> - flooding - devaluation of properties at risk and neighbouring property - anxiety and stress to owners at risk - impact on local community - potential impacts from flood risk management works e.g. disturbance, damage to property 		<ul style="list-style-type: none"> - and employment - contribution to local community 	community and visitors	flooding or flood risk management works (Population and Human Health)					
Community facilities in New Hythe, Lunsford, Leybourne Lakes and Aylesford (such as churches, pubs, shops, schools, village halls)	<ul style="list-style-type: none"> - potential loss of life or injury through flooding - potential loss of/ damage to facilities through flooding - impact on local community - potential impacts from flood risk management works e.g. disruption, damage to facilities 	Yes	<ul style="list-style-type: none"> - contribution to local community 	<ul style="list-style-type: none"> - Local community and visitors 	Prevent loss/ damage to community facilities from flooding or flood risk management works (Population and Human Health, Material Assets)	Local	High	No	Yes	H2
Industrial areas, including paper mills at New Hythe	<ul style="list-style-type: none"> - potential loss of life or injury through flooding - potential loss of/ damage/ disruption to site through 	Yes	<ul style="list-style-type: none"> - Contribution to economy and employment - Investment of 	<ul style="list-style-type: none"> - Local, Regional, National and Internationa 	Prevent loss/ damage/ disruption to industrial areas	National	High	No	No	C1

Feature	Issues associated with Feature	Affect Policy ?	Why is the feature important?	Who benefits?	Objective ¹	Scale?	Importance?	Enough?	Replace ?	Rank
	flooding		<ul style="list-style-type: none"> owners - Paper mills are some of the largest in the UK, paper is recycled from UK and Europe 	<ul style="list-style-type: none"> Local Community 	(Land Use, Material Assets)					
Major infrastructure e.g. local roads, M20, A228, Aylesford Bridge and Aylesford New Bridge, main railway line and station, electricity pylons, Sewage Treatment Works, services and communications	<ul style="list-style-type: none"> - potential loss/ damage/ disruption to infrastructure through flooding 	Yes	<ul style="list-style-type: none"> - essential links for communities, businesses and industry 	<ul style="list-style-type: none"> - Local and regional community - M20 forms part of the trans-European road network, therefore the international community 	Prevent loss/ damage/ disruption to infrastructure from flooding (Infrastructure)	Regional	High	No	Yes	F2
Structures/ ancillary infrastructure abandoned through flooding	<ul style="list-style-type: none"> - Health and Safety and environmental hazards caused by flooding/ abandonment of property and associated services 	No								
Leybourne Lakes, including Abbey	<ul style="list-style-type: none"> - potential loss/ damage/ disruption to area through 		<ul style="list-style-type: none"> - Leybourne Lakes is a SNCI and 	<ul style="list-style-type: none"> - Local and national community 	Promote biodiversity opportunities and	National	High	No	Yes	E3

Feature	Issues associated with Feature	Affect Policy ?	Why is the feature important?	Who benefits?	Objective ¹	Scale?	Importance?	Enough?	Replace ?	Rank
Meads lake	flooding		<p>Country Park</p> <ul style="list-style-type: none"> - Abbey Meads Lake is part of Holborough to Burham marshes SSSI - Wetland habitats host protected and BAP priority species e.g. water voles - Abbey Meads lake is an important site for breeding and wintering birds - The lakes are an important facility for formal and informal recreation e.g. windsurfing, diving, angling, recreation is important for quality of life 	and visitors	<p>prevent loss/ damage/ disruption to Leybourne Lakes through flooding</p> <p>(Biodiversity, Flora and Fauna)</p>					

Feature	Issues associated with Feature	Affect Policy ?	Why is the feature important?	Who benefits?	Objective ¹	Scale?	Importance?	Enough?	Replace ?	Rank
Public Footpaths, including along riverside	<ul style="list-style-type: none"> - potential loss or disruption through flooding - potential loss or disruption caused by flood risk management measures 	Yes	<ul style="list-style-type: none"> - having access to the countryside and informal recreation (walking and cycling) is important for quality of life 	<ul style="list-style-type: none"> - Local community and visitors 	<p>Prevent loss/ disruption to footpath from flooding and flood risk management works</p> <p>Seek opportunities to enhance features where appropriate</p> <p>(Population, Land Use)</p>	Local	Medium	No	Yes	R3
Aylesford Conservation Area, including Aylesford Bridge	<ul style="list-style-type: none"> - potential loss through flooding - potential loss/ damage caused by flood risk management measures 	Yes	<ul style="list-style-type: none"> - Aylesford is a Conservation Area and Aylesford Bridge is a Scheduled Ancient Monument - Heritage features contribute to the character of an area and are enjoyed by local community, they 	<ul style="list-style-type: none"> - Local and national community 	<p>Prevent loss/ damage to Conservation Area and SAM from flooding and flood risk management works</p> <p>Seek opportunities to enhance features where appropriate</p>	National	High	No	No	G2

Feature	Issues associated with Feature	Affect Policy ?	Why is the feature important?	Who benefits?	Objective ¹	Scale?	Importance?	Enough?	Replace ?	Rank
			can also attract visitors to the area and therefore benefit the local economy		(Cultural Heritage, including architectural and archaeological heritage)					
Non-statutory known and unknown heritage	<ul style="list-style-type: none"> - potential loss through flooding - potential loss/ damage caused by flood risk management measures 	Yes	<ul style="list-style-type: none"> - the area has high potential for heritage value 	<ul style="list-style-type: none"> - Local and national community 	<p>Prevent loss/ damage to heritage from flooding and flood risk management works or implement appropriate mitigation measures, including preservation of evidence by record</p> <p>Seek opportunities to enhance features where appropriate</p> <p>(Cultural Heritage, including</p>	Local	Medium	No	No	G4

Feature	Issues associated with Feature	Affect Policy ?	Why is the feature important?	Who benefits?	Objective ¹	Scale?	Importance?	Enough?	Replace ?	Rank
					architectural and archaeological heritage)					
Landscape of the river valley, including existing defences	<ul style="list-style-type: none"> - potential degradation through flooding and associated impacts - potential adverse impacts caused by flood risk management measures e.g. construction of large sea defences 	Yes	<ul style="list-style-type: none"> - an attractive place to live and visit is important for quality of life and may bring visitors to the area which will have economic benefit - the area is part of the Kent Downs AONB and the North Downs Special Landscape Area - Defence structures are part of the landscape character and may have heritage value as are part of flood defence and land use history 	<ul style="list-style-type: none"> - Local and national community and visitors 	<p>Prevent degradation of landscape quality and visual amenity from flooding and flood risk management works</p> <p>Ensure consideration of existing defences on landscape and heritage grounds</p> <p>Seek opportunities to enhance features where appropriate</p> <p>(Landscape)</p>	National	High	No	No	L1

Feature	Issues associated with Feature	Affect Policy ?	Why is the feature important?	Who benefits?	Objective ¹	Scale?	Importance?	Enough?	Replace ?	Rank
Facilities for recreation on the river, and associated business, including moorings and slipways, access to foreshore and river (including for fishing)	<ul style="list-style-type: none"> - potential loss/ damage/ disruption to facilities and businesses through flooding - potential loss/ damage/ disruption caused by flood risk management measures 	Yes	<ul style="list-style-type: none"> - water based recreation on the River Medway is regionally significant - Recreation is important for quality of life - Facilities can bring visitors to the area and therefore benefit the local economy - Investment for individual owners 	<ul style="list-style-type: none"> - Local community and visitors 	<p>Prevent loss/ damage/ disruption to recreation and associated business from flooding and flood risk management works</p> <p>Seek opportunities to enhance features where appropriate</p> <p>(Population, Land Use, Material Assets, Infrastructure)</p>	Regional	high	No	No	R2
LOCATION: ALLINGTON LOCK TO MEDWAY (M2) BRIDGE (RIGHT BANK LOOKING DOWNSTREAM)										
Residential properties at Forstal and Aylesford	<ul style="list-style-type: none"> - potential loss of life or injury through flooding - potential loss of/ damage to housing through flooding 	Yes	<ul style="list-style-type: none"> - homes for people. Represents substantial investment for 	<ul style="list-style-type: none"> - Individual residents and local community 	Prevent loss/ damage to residential properties from flooding or flood	Local	High	No	Yes	H2

Feature	Issues associated with Feature	Affect Policy ?	Why is the feature important?	Who benefits?	Objective ¹	Scale?	Importance?	Enough?	Replace ?	Rank
	<ul style="list-style-type: none"> - devaluation of properties at risk and neighbouring property - anxiety and stress to owners and occupiers at risk - impact on local community - potential impacts from flood risk management works e.g. disturbance, impact on views, damage to property 		<ul style="list-style-type: none"> - individual property owners - loss of existing housing stock, alternatives would have to be found by individuals - potential impacts on community structure 		risk management works (Population and Human Health)					
Residential properties near to Burham and on the edge of Wouldham	<ul style="list-style-type: none"> - potential loss of life or injury through flooding - potential loss of/ damage to housing through flooding - devaluation of properties at risk and neighbouring property - anxiety and stress to owners and occupiers at risk - impact on local community - potential impacts from flood risk management works e.g. disturbance, impact on 	Yes	<ul style="list-style-type: none"> - homes for people. Represents substantial investment for individual property owners - loss of existing housing stock, alternatives would have to be found by individuals - potential impacts on community structure 	<ul style="list-style-type: none"> - Individual residents and local community 	Prevent loss/ damage to residential properties from flooding or flood risk management works (Population and Human Health)	Local	High	No	Yes	H2

Feature	Issues associated with Feature	Affect Policy ?	Why is the feature important?	Who benefits?	Objective ¹	Scale?	Importance?	Enough?	Replace ?	Rank
	views, damage to property									
Commercial properties – businesses in Forstal and Aylesford	<ul style="list-style-type: none"> - potential loss of life or injury through flooding - potential loss of/ damage to businesses through flooding - devaluation of properties at risk and neighbouring property - anxiety and stress to owners at risk - impact on local community - potential impacts from flood risk management works e.g. disturbance, damage to property 	Yes	<ul style="list-style-type: none"> - investment of individual owners - contribution to local economy and employment - contribution to local community 	<ul style="list-style-type: none"> - Individual business owners, local community and visitors 	Prevent loss/ damage to commercial properties from flooding or flood risk management works (Population and Human health)	Regional	High	No	Yes	C2
Community facilities in Forstal and Aylesford (such as churches, pubs, shops, schools, village halls)	<ul style="list-style-type: none"> - potential loss of life or injury through flooding - potential loss of/ damage to facilities through flooding - impact on local community - potential impacts from flood risk management works 	Yes	<ul style="list-style-type: none"> - contribution to local community 	<ul style="list-style-type: none"> - Local community and visitors 	Prevent loss/ damage to community facilities from flooding or flood risk management works (Population and	Local	High	No	Yes	H2

Feature	Issues associated with Feature	Affect Policy ?	Why is the feature important?	Who benefits?	Objective ¹	Scale?	Importance?	Enough?	Replace ?	Rank
	e.g. disruption, damage to facilities				Human Health, Material Assets)					
Industrial Areas in Forstal and Aylesford	<ul style="list-style-type: none"> - potential loss of life or injury through flooding - potential loss of/ damage/ disruption to site through flooding 	Yes	<ul style="list-style-type: none"> - Contribution to economy and employment - Investment of owners 	<ul style="list-style-type: none"> - Local and Regional Community 	Prevent loss/ damage/ disruption to industrial areas (Land Use, Material Assets)	Regional	High	No	Yes	C2
Major infrastructure e.g. local roads, bridges e.g. Aylesford Bridge, electricity pylons, Sewage Treatment works, services and communications	<ul style="list-style-type: none"> - potential loss/ damage/ disruption to infrastructure through flooding 	Yes	<ul style="list-style-type: none"> - essential links for communities, businesses and industry 	<ul style="list-style-type: none"> - Local and regional community - M2 and CTRL are of international importance 	Prevent loss/ damage/ disruption to infrastructure from flooding (Infrastructure)	Regional	High	No	Yes	F2
Structures/ ancillary infrastructure abandoned through flooding	<ul style="list-style-type: none"> - Health and Safety and environmental hazards caused by flooding/ abandonment of property and associated services 	No								
Agricultural Land	<ul style="list-style-type: none"> - potential loss of land, farms and farm buildings through flooding - impacts on farm 	Yes	<ul style="list-style-type: none"> - represents substantial investment for individual owners 	<ul style="list-style-type: none"> - Individual farmers and employees - Local 	Prevent loss/ reduced potential of agricultural land from flooding	Local	High	Yes	Yes	C3

Feature	Issues associated with Feature	Affect Policy ?	Why is the feature important?	Who benefits?	Objective ¹	Scale?	Importance?	Enough?	Replace ?	Rank
	<ul style="list-style-type: none"> businesses and viability - devaluation of land at risk - anxiety and stress to owners at risk 		<ul style="list-style-type: none"> - loss of existing agricultural land stock, mainly Grade 3 and 4 - economy/ employment through farming - contribution to local community 	community	(Land Use)					
Public footpaths, including along tidal embankments, Medway valley walk	<ul style="list-style-type: none"> - potential loss or disruption through flooding - potential loss or disruption caused by flood risk management measures 	Yes	<ul style="list-style-type: none"> - having access to the countryside and informal recreation is important for quality of life 	<ul style="list-style-type: none"> - Local community and visitors 	Prevent loss/ disruption to footpath from flooding and flood risk management works Seek opportunities to enhance features where appropriate (Population, Land Use)	Local	Medium	No	Yes	R3
Facilities for recreation on the river, and	<ul style="list-style-type: none"> - potential loss/ damage/ disruption to facilities and businesses through 	Yes	<ul style="list-style-type: none"> - water based recreation on the River Medway is 	<ul style="list-style-type: none"> - Local community and visitors 	Prevent loss/ damage/ disruption to recreation and	Regional	High	No	No	R2

Feature	Issues associated with Feature	Affect Policy ?	Why is the feature important?	Who benefits?	Objective ¹	Scale?	Importance?	Enough?	Replace ?	Rank
associated business, including moorings and slipways, access to foreshore and river (including for fishing)	<ul style="list-style-type: none"> - flooding - potential loss/ damage/ disruption caused by flood risk management measures 		<ul style="list-style-type: none"> - regionally significant - Recreation is important for quality of life - Facilities can bring visitors to the area and therefore benefit the local economy - Investment for individual owners 		<p>associated business from flooding and flood risk management works</p> <p>Seek opportunities to enhance features where appropriate</p> <p>(Population, Land Use, Material Assets, Infrastructure)</p>					
Aylesford Conservation Area, including Aylesford Bridge and Aylesford Priory	<ul style="list-style-type: none"> - potential loss through flooding - potential loss/ damage caused by flood risk management measures 	Yes	<ul style="list-style-type: none"> - Aylesford is a Conservation Area and Aylesford Bridge and Aylesford Priory are Scheduled Ancient Monuments - Heritage features contribute to the character of an 	<ul style="list-style-type: none"> - Local and national community 	<p>Prevent loss/ damage to Conservation Area and SAM from flooding and flood risk management works</p> <p>Seek opportunities to enhance features where appropriate</p>	National	High	No	No	G2

Feature	Issues associated with Feature	Affect Policy ?	Why is the feature important?	Who benefits?	Objective ¹	Scale?	Importance?	Enough?	Replace ?	Rank
			area and are enjoyed by local community, they can also attract visitors to the area and therefore benefit the local economy		(Cultural Heritage, including architectural and archaeological heritage)					
Non-statutory known and unknown heritage	<ul style="list-style-type: none"> - potential loss through flooding - potential loss/ damage caused by flood risk management measures 	Yes	<ul style="list-style-type: none"> - the area has high potential for heritage value 	<ul style="list-style-type: none"> - Local and national community 	<p>Prevent loss/ damage to heritage from flooding and flood risk management works or implement appropriate mitigation measures, including preservation of evidence by record</p> <p>Seek opportunities to enhance features where appropriate</p> <p>(Cultural Heritage,</p>	Local	Medium	No	No	G4

Feature	Issues associated with Feature	Affect Policy ?	Why is the feature important?	Who benefits?	Objective ¹	Scale?	Importance?	Enough?	Replace ?	Rank
					including architectural and archaeological heritage)					
Landscape of the river and marshes, including existing defences	<ul style="list-style-type: none"> - potential degradation caused by flooding and associated impacts - potential adverse impacts caused by flood risk management measures e.g. construction of large sea defences 	Yes	<ul style="list-style-type: none"> - an attractive place to live and visit is important for quality of life and may bring visitors to the area which will have economic benefits - The area is part of the Kent Downs AONB and North Downs Special Landscape Area - Defence structures are part of the landscape character and may have heritage value as are part of flood defence and land use history 	<ul style="list-style-type: none"> - Local and national community and visitors 	<p>Prevent degradation of landscape quality and visual amenity from flooding/ risk management works</p> <p>Ensure consideration of existing defences on landscape and heritage grounds</p> <p>Seek opportunities to enhance features where appropriate</p> <p>(Landscape)</p>	National	High	No	No	L1

Feature	Issues associated with Feature	Affect Policy ?	Why is the feature important?	Who benefits?	Objective ¹	Scale?	Importance?	Enough?	Replace ?	Rank
River Medway and Marshes, Wouldham SNCI	<ul style="list-style-type: none"> - potential loss of freshwater habitat through flooding - potential opportunity to return to intertidal habitat - potential loss of intertidal habitat through coastal squeeze - potential loss/ damage caused by flood risk management works 	Yes	<ul style="list-style-type: none"> - The freshwater grazing marsh is a SNCI 	<ul style="list-style-type: none"> - Local community 	Promote biodiversity opportunities and prevent loss/ damage to habitats and associated species from flooding and flood risk management works (Biodiversity, Flora and Fauna)	Local	High	No	Yes	E4
Eccles Old Pits SNCI	<ul style="list-style-type: none"> - potential loss of habitat through flooding - potential loss/ damage caused by flood risk management works 	Yes	<ul style="list-style-type: none"> - the scrub, woodland and grassland is a SNCI and hosts rare and priority BAP species 	<ul style="list-style-type: none"> - Local community 	Promote biodiversity opportunities and prevent loss/ damage to habitats and associated species from flooding and flood risk management works (Biodiversity, Flora and Fauna)	Local	High	No	Yes	E4
Burham Marshes	<ul style="list-style-type: none"> - potential loss of terrestrial 	Yes	<ul style="list-style-type: none"> - grassland 	<ul style="list-style-type: none"> - Local and 	Promote	National	High	No	Yes	E3

Feature	Issues associated with Feature	Affect Policy ?	Why is the feature important?	Who benefits?	Objective ¹	Scale?	Importance?	Enough?	Replace ?	Rank
	<p>and freshwater/ brackish habitat through flooding</p> <ul style="list-style-type: none"> - potential loss of intertidal habitat through coastal squeeze - potential loss/ damage caused by flood risk management works 		<p>(including flood defence embankments), reedbed and intertidal habitat is part of the Holborough to Burham marshes SSSI</p> <ul style="list-style-type: none"> - these habitat are UK BAP priority habitats and host protected and BAP priority species e.g. water voles 	national community	<p>biodiversity opportunities and prevent loss/ damage to habitats and associated species from flooding and flood risk management works</p> <p>(Biodiversity, Flora and Fauna)</p>					
Rough Grass Land adjacent to Burham marshes	<ul style="list-style-type: none"> - potential loss of habitat through flooding - potential loss/ damage caused by flood risk management works 	Yes	<ul style="list-style-type: none"> - the grassland is a SNCI 	<ul style="list-style-type: none"> - Local community 	<p>Promote biodiversity opportunities and prevent loss/ damage to habitats and associated species from flooding and flood risk management works</p> <p>(Biodiversity, Flora</p>	Local	High	No	Yes	E4

Feature	Issues associated with Feature	Affect Policy ?	Why is the feature important?	Who benefits?	Objective ¹	Scale?	Importance?	Enough?	Replace ?	Rank
					and Fauna)					
LOCATION: MEDWAY (M2) BRIDGE TO EAST OF ST MARY'S ISLAND										
Residential properties at St Mary's Island	<ul style="list-style-type: none"> - potential loss of life or injury through flooding - potential loss of/ damage to housing through flooding - devaluation of properties at risk and neighbouring property - anxiety and stress to owners and occupiers at risk - impact on local community - potential impacts from flood risk management works e.g. disturbance, impact on views, damage to property 	Yes	<ul style="list-style-type: none"> - homes for people. Represents substantial investment for individual property owners - loss of existing housing stock, alternatives would have to be found by individuals - potential impacts on community structure 	<ul style="list-style-type: none"> - Individual residents and local community 	Prevent loss/ damage to residential properties from flooding or flood risk management works (Population and Human Health)	Regional	High	No	Yes	H1
Commercial properties along Rochester waterfront and at St Mary's Island	<ul style="list-style-type: none"> - potential loss of life or injury through flooding - potential loss of/ damage to businesses through flooding 	Yes	<ul style="list-style-type: none"> - investment of individual owners - contribution to local economy and employment 	<ul style="list-style-type: none"> - Individual business owners, local community and visitors 	Prevent loss/ damage to commercial properties from flooding or flood risk management	Local	High	No	Yes	C3

Feature	Issues associated with Feature	Affect Policy ?	Why is the feature important?	Who benefits?	Objective ¹	Scale?	Importance?	Enough?	Replace ?	Rank
	<ul style="list-style-type: none"> - devaluation of properties at risk and neighbouring property - anxiety and stress to owners at risk - impact on local community - potential impacts from flood risk management works e.g. disturbance, damage to property 		<ul style="list-style-type: none"> - contribution to local community 		<p>works</p> <p>(Population and Human Health)</p>					
Community facilities at St Mary's Island	<ul style="list-style-type: none"> - potential loss of life or injury through flooding - potential loss of/ damage to facilities through flooding - impact on local community - potential impacts from flood risk management works e.g. disruption, damage to facilities 	Yes	<ul style="list-style-type: none"> - contribution to local community 	<ul style="list-style-type: none"> - Local community and visitors 	<p>Prevent loss/ damage to community facilities from flooding or flood risk management works</p> <p>(Population and Human Health, Material Assets)</p>	Regional	High	No	Yes	H2
Future residential areas at Rochester Riverside	<ul style="list-style-type: none"> - potential loss of life or injury through flooding - potential loss of/ damage to housing through flooding - devaluation of properties at 	Yes	<ul style="list-style-type: none"> - major area for residential and economic development and part of the Thames 	<ul style="list-style-type: none"> - Local community 	<p>Prevent loss/ damage to Rochester Riverside from flooding or flood risk management</p>	Regional	High	No	Yes	H2

Feature	Issues associated with Feature	Affect Policy ?	Why is the feature important?	Who benefits?	Objective ¹	Scale?	Importance?	Enough?	Replace ?	Rank
	<ul style="list-style-type: none"> risk and neighbouring property - anxiety and stress to owners and occupiers at risk - impact on local community - potential impacts from flood risk management works e.g. disturbance, impact on views, damage to property 		<ul style="list-style-type: none"> Gateway - Once built this feature will be ranked as H1 - Risk of flooding has an impact on investor confidence especially in growth and regeneration areas 		<p>works</p> <p>(Population and Human Health)</p>					
Chatham Dock	<ul style="list-style-type: none"> - potential loss of life or injury through flooding - potential loss of/ damage/ disruption to site through flooding - potential impacts on associated business/ industries - potential impacts on deep water berths caused by changes in estuary system 	Yes	<ul style="list-style-type: none"> - The Medway Ports terminal at Chatham handles a wide range of products and raw materials, major contribution to commercial use of the River Medway - investment of owners - contribution to economy and employment 	<ul style="list-style-type: none"> - Local, Regional, National and International Community 	<p>Prevent loss/ damage/ disruption to Chatham Dock from flooding</p> <p>(Land Use, Material Assets, Infrastructure)</p>	International	Medium	No	No	F1

Feature	Issues associated with Feature	Affect Policy ?	Why is the feature important?	Who benefits?	Objective ¹	Scale?	Importance?	Enough?	Replace ?	Rank
Major infrastructure e.g. local roads, Medway Tunnel, railway line, services and communications	- potential loss/ damage/ disruption to infrastructure through flooding	Yes	- essential links for communities, businesses and industry	- Local and regional community	Prevent loss/ damage/ disruption to infrastructure from flooding (Infrastructure)	Regional	High	No	Yes	F2
Structures/ ancillary infrastructure abandoned through flooding	- Health and Safety and environmental hazards caused by flooding/ abandonment of property and associated services	No								
Water recreation facilities and associated business, including Thunderbolt pier (Historic dockyard), the Esplanade (Rochester), Sun Pier (Chatham), marina and moorings, public slipways	- potential loss/ damage/ disruption to facilities and businesses through flooding - potential loss/ damage/ disruption caused by flood risk management measures	Yes	- water based recreation on the River Medway is regionally significant - Recreation is important for quality of life - Facilities can bring visitors to the area and therefore benefit the local economy - Investment for	- Local community and visitors	Prevent loss/ damage/ disruption to recreation and associated business from flooding and flood risk management works Seek opportunities to enhance features where appropriate (Population, Land	Regional	High	No	No	R2

Feature	Issues associated with Feature	Affect Policy ?	Why is the feature important?	Who benefits?	Objective ¹	Scale?	Importance?	Enough?	Replace ?	Rank
			individual owners		Use, Material Assets, Infrastructure)					
Public footpaths, including along tidal embankments, Medway valley walk, riverside walkway in urban areas	<ul style="list-style-type: none"> - potential loss or disruption through flooding - potential loss or disruption caused by flood risk management measures 	Yes	<ul style="list-style-type: none"> - having access to the countryside and informal (e.g. walking and cycling) recreation is important for quality of life 	<ul style="list-style-type: none"> - Local community and visitors 	<p>Prevent loss/ disruption to footpath from flooding and flood risk management works</p> <p>Seek opportunities to enhance features where appropriate</p> <p>(Population, Land Use)</p>	Local	Medium	No	Yes	R3
Chatham Historic Dockyard Conservation Area and SAM's within it	<ul style="list-style-type: none"> - potential loss through flooding - potential loss/ damage caused by flood risk management measures 	Yes	<ul style="list-style-type: none"> - most complete former Royal Dockyard in Britain, contains the largest concentration of SAM's in Kent, potential World Heritage site status 	<ul style="list-style-type: none"> - Local, Regional, National and International Community 	<p>Prevent loss/ damage to Conservation Area and SAM from flooding and flood risk management works</p> <p>Seek opportunities</p>	International	High	No	No	G1

Feature	Issues associated with Feature	Affect Policy ?	Why is the feature important?	Who benefits?	Objective ¹	Scale?	Importance?	Enough?	Replace ?	Rank
			<ul style="list-style-type: none"> - there are small businesses within the Dockyard - Heritage features contribute to the character of an area and are enjoyed by local community, they can also attract visitors to the area and therefore benefit the local economy 		<p>to enhance features where appropriate</p> <p>(Cultural Heritage, including architectural and archaeological heritage)</p>					
Star Hill to Sun Pier Conservation Area (Rochester)	<ul style="list-style-type: none"> - potential loss through flooding - potential loss/ damage caused by flood risk management measures 	Yes	<ul style="list-style-type: none"> - Heritage features contribute to the character of an area and are enjoyed by local community, they can also attract visitors to the area and therefore benefit the local economy 	<ul style="list-style-type: none"> - Local, and national community 	<p>Prevent loss/ damage to Conservation Area from flooding and flood risk management works</p> <p>Seek opportunities to enhance features where appropriate</p>	National	High	No	No	G2

Feature	Issues associated with Feature	Affect Policy ?	Why is the feature important?	Who benefits?	Objective ¹	Scale?	Importance?	Enough?	Replace ?	Rank
					(Cultural Heritage, including architectural and archaeological heritage)					
Non-statutory known and unknown heritage	<ul style="list-style-type: none"> - potential loss through flooding - potential loss/ damage caused by flood risk management measures 	Yes	<ul style="list-style-type: none"> - the area has high potential for heritage value 	<ul style="list-style-type: none"> - Local and national community 	<p>Prevent loss/ damage to heritage from flooding and flood risk management works or implement appropriate mitigation measures, including preservation of evidence by record</p> <p>Seek opportunities to enhance features where appropriate</p> <p>(Cultural Heritage, including architectural and</p>	Local	Medium	No	No	G4

Feature	Issues associated with Feature	Affect Policy ?	Why is the feature important?	Who benefits?	Objective ¹	Scale?	Importance?	Enough?	Replace ?	Rank
					archaeological heritage)					
Landscape of the river and urban areas, including existing defences	<ul style="list-style-type: none"> - potential degradation caused by flooding and associated impacts - potential adverse impacts caused by flood risk management measures e.g. construction of large sea defences 	Yes	<ul style="list-style-type: none"> - an attractive place to live and visit is important for quality of life and may bring visitors to the area which will have economic benefits - Defence structures are part of the landscape character and may have heritage value as are part of flood defence and land use history 	<ul style="list-style-type: none"> - Local community and visitors 	<p>Prevent degradation of landscape quality and visual amenity from flooding/ risk management works</p> <p>Ensure consideration of existing defences on landscape and heritage grounds</p> <p>Seek opportunities to enhance features where appropriate</p> <p>(Landscape)</p>	Local	High	No	No	L3
LOCATION: ST MARY'S ISLAND TO WEST OF MOTNEY HILL										

Feature	Issues associated with Feature	Affect Policy ?	Why is the feature important?	Who benefits?	Objective ¹	Scale?	Importance?	Enough?	Replace ?	Rank
Residential properties along Gillingham waterfront	<ul style="list-style-type: none"> - potential loss of life or injury through flooding - potential loss of/ damage to housing through flooding - devaluation of properties at risk and neighbouring property - anxiety and stress to owners and occupiers at risk - impact on local community - potential impacts from flood risk management works e.g. disturbance, impact on views, damage to property 	Yes	<ul style="list-style-type: none"> - homes for people. Represents substantial investment for individual property owners - loss of existing housing stock, alternatives would have to be found by individuals - potential impacts on community structure - Impact on investor confidence in growth and regeneration areas 	<ul style="list-style-type: none"> - Individual residents and local community 	Prevent loss/ damage to residential properties from flooding or flood risk management works (Population and Human Health)	Local	High	No	Yes	H2
Commercial properties along Gillingham waterfront	<ul style="list-style-type: none"> - potential loss of life or injury through flooding - potential loss of/ damage to businesses through flooding 	Yes	<ul style="list-style-type: none"> - investment of individual owners - contribution to local economy and employment 	<ul style="list-style-type: none"> - Individual business owners, local community and visitors 	Prevent loss/ damage to commercial properties from flooding or flood risk management	Local	High	No	Yes	C3

Feature	Issues associated with Feature	Affect Policy ?	Why is the feature important?	Who benefits?	Objective ¹	Scale?	Importance?	Enough?	Replace ?	Rank
	<ul style="list-style-type: none"> - devaluation of properties at risk and neighbouring property - anxiety and stress to owners at risk - impact on local community - potential impacts from flood risk management works e.g. disturbance, damage to property 		<ul style="list-style-type: none"> - contribution to local community 		<p>works</p> <p>(Population and Human Health)</p>					
Community facilities along Gillingham waterfront	<ul style="list-style-type: none"> - potential loss of life or injury through flooding - potential loss of/ damage to facilities through flooding - impact on local community - potential impacts from flood risk management works e.g. disruption, damage to facilities 	Yes	<ul style="list-style-type: none"> - contribution to local community 	<ul style="list-style-type: none"> - Local community and visitors 	<p>Prevent loss/ damage to community facilities from flooding or flood risk management works</p> <p>(Population and Human Health, Material Assets)</p>	Local	High	No	Yes	H2
Residential properties at edge of Lower Twydall	<ul style="list-style-type: none"> - potential loss of life or injury through flooding - potential loss of/ damage to housing through flooding - devaluation of properties at 	Yes	<ul style="list-style-type: none"> - homes for people. Represents substantial investment for individual 	<ul style="list-style-type: none"> - Individual residents and local community 	<p>Prevent loss/ damage to residential properties from flooding or flood risk management</p>	Local	High	No	Yes	H2

Feature	Issues associated with Feature	Affect Policy ?	Why is the feature important?	Who benefits?	Objective ¹	Scale?	Importance?	Enough?	Replace ?	Rank
	risk and neighbouring property - anxiety and stress to owners and occupiers at risk - impact on local community - potential impacts from flood risk management works e.g. disturbance, impact on views, damage to property		property owners - loss of existing housing stock, alternatives would have to be found by individuals - potential impacts on community structure		works (Population and Human Health)					
Major infrastructure e.g. local roads, bridges, services and communications	- potential loss/ damage/ disruption to infrastructure through flooding	Yes	- essential links for communities, businesses and industry	- Local and regional community	Prevent loss/ damage/ disruption to infrastructure from flooding (Infrastructure)	Local	High	No	Yes	F3
Structures/ ancillary infrastructure abandoned through flooding	- Health and Safety and environmental hazards caused by flooding/ abandonment of property and associated services	No								
Public footpaths, including Saxon Shore Way	- potential loss or disruption through flooding - potential loss or disruption caused by flood risk	Yes	- having access to the countryside and informal recreation is important for	- Local and regional community and visitors	Prevent loss/ disruption to footpath from flooding and flood risk management	Local	Medium	No	Yes	R3

Feature	Issues associated with Feature	Affect Policy ?	Why is the feature important?	Who benefits?	Objective ¹	Scale?	Importance?	Enough?	Replace ?	Rank
	management measures		quality of life - The Saxon Shore Way is a long distance footpath between Gravesend and Rye		works Seek opportunities to enhance features where appropriate (Population, Land Use)					
Facilities for recreation on the river, and associated business, including Gillingham Pier, marina, The Strand, Riverside Country Park, moorings and slipways, access to foreshore and river (including for fishing)	- potential loss/ damage/ disruption to facilities and businesses through flooding - potential loss/ damage/ disruption caused by flood risk management measures	Yes	- water based recreation on the River Medway is regionally significant - Recreation is important for quality of life - Facilities can bring visitors to the area and therefore benefit the local economy - Investment for individual owners	- Local community and visitors	Prevent loss/ damage/ disruption to recreation and associated business from flooding and flood risk management works Seek opportunities to enhance features where appropriate (Population, Land Use, Material Assets,	Regional	High	No	No	R2

Feature	Issues associated with Feature	Affect Policy ?	Why is the feature important?	Who benefits?	Objective ¹	Scale?	Importance?	Enough?	Replace ?	Rank
					Infrastructure)					
Intertidal Habitat, including saltmarsh islands	<ul style="list-style-type: none"> - potential loss of area through coastal squeeze (rising sea levels and hard defences preventing migration inland) - potential loss of islands due to sea level rise - potential loss/ damage caused by flood risk management works 	Yes	<ul style="list-style-type: none"> - Intertidal area is part of the Medway Estuary and Marshes SSSI, SPA and Ramsar site (habitat for birds, plants and invertebrates) - Nor Marsh (island) is part of the Nor Marsh and Motney Hill RSPB reserve - Intertidal habitats are UK BAP priority habitats - Intertidal habitats support rare species and are important for fish - Recreational activities e.g. Wildfowling on the intertidal 	<ul style="list-style-type: none"> - Local, national and international community 	Promote biodiversity opportunities and avoid net loss of intertidal habitat and associated species from coastal squeeze and flood risk management works (Biodiversity, Flora and Fauna)	International	High	No	Yes	E1

Feature	Issues associated with Feature	Affect Policy ?	Why is the feature important?	Who benefits?	Objective ¹	Scale?	Importance?	Enough?	Replace ?	Rank
			area							
Non-statutory known and unknown heritage	<ul style="list-style-type: none"> - potential loss through flooding - potential loss/ damage caused by flood risk management measures 	Yes	<ul style="list-style-type: none"> - the area has high potential for heritage value 	<ul style="list-style-type: none"> - Local and national community 	<p>Prevent loss/ damage to heritage from flooding and flood risk management works or implement appropriate mitigation measures, including preservation of evidence by record</p> <p>Seek opportunities to enhance features where appropriate</p> <p>(Cultural Heritage, including architectural and archaeological heritage)</p>	Local	Medium	No	No	G4

Feature	Issues associated with Feature	Affect Policy ?	Why is the feature important?	Who benefits?	Objective ¹	Scale?	Importance?	Enough?	Replace ?	Rank
Landscape of the estuary, open spaces and developed areas, including existing defences	<ul style="list-style-type: none"> - potential degradation caused by flooding and associated impacts - potential adverse impacts caused by flood risk management measures e.g. construction of large sea defences 	Yes	<ul style="list-style-type: none"> - an attractive place to live and visit is important for quality of life and may bring visitors to the area which will have economic benefits - The Area is part of the North Kent Marshes Special Landscape Area - Defence structures are part of the landscape character and may have heritage value as are part of flood defence and land use history 	<ul style="list-style-type: none"> - Local community and visitors 	<p>Prevent degradation of landscape quality and visual amenity from flooding/ risk management works</p> <p>Ensure consideration of existing defences on landscape and heritage grounds</p> <p>Seek opportunities to enhance features where appropriate</p> <p>(Landscape)</p>	Sub-regional	High	No	No	L2
LOCATION: MOTNEY HILL TO KINGSFERRY BRIDGE										

Feature	Issues associated with Feature	Affect Policy ?	Why is the feature important?	Who benefits?	Objective ¹	Scale?	Importance?	Enough?	Replace ?	Rank
Residential properties on edge of Wetham Green and Bayford and Lower Halstow	<ul style="list-style-type: none"> - potential loss of life or injury through flooding - potential loss of/ damage to housing through flooding - devaluation of properties at risk and neighbouring property - anxiety and stress to owners and occupiers at risk - impact on local community - potential impacts from flood risk management works e.g. disturbance, impact on views, damage to property 	Yes	<ul style="list-style-type: none"> - homes for people. Represents substantial investment for individual property owners - loss of existing housing stock, alternatives would have to be found by individuals - potential impacts on community structure 	<ul style="list-style-type: none"> - Individual residents and local community 	Prevent loss/ damage to residential properties from flooding or flood risk management works (Population and Human Health)	Local	High	No	Yes	H2
Commercial properties at Otterham Creek	<ul style="list-style-type: none"> - potential loss of life or injury through flooding - potential loss of/ damage to businesses through flooding - devaluation of properties at risk and neighbouring property - anxiety and stress to owners at risk 	Yes	<ul style="list-style-type: none"> - investment of individual owners - contribution to local economy and employment - contribution to local community 	<ul style="list-style-type: none"> - Individual business owners, local community and visitors 	Prevent loss/ damage to commercial properties from flooding or flood risk management works (Population and Human Health)	Regional	High	No	Yes	C2

Feature	Issues associated with Feature	Affect Policy ?	Why is the feature important?	Who benefits?	Objective ¹	Scale?	Importance?	Enough?	Replace ?	Rank
	<ul style="list-style-type: none"> - impact on local community - potential impacts from flood risk management works e.g. disturbance, damage to property 									
Major infrastructure e.g. local roads, A249, Kingsferry Bridge, Motney Hill Sewage Treatment works, services and communications	<ul style="list-style-type: none"> - potential loss/ damage/ disruption to infrastructure through flooding 	Yes	<ul style="list-style-type: none"> - essential links for communities, businesses and industry 	<ul style="list-style-type: none"> - Local, regional and national community 	Prevent loss/ damage/ disruption to infrastructure from flooding (infrastructure)	Regional	High	No	Yes	F2
Structures/ ancillary infrastructure abandoned through flooding	<ul style="list-style-type: none"> - Health and Safety and environmental hazards caused by flooding/ abandonment of property and associated services 	No								
Intertidal Habitat, including saltmarsh islands e.g. Burntwick Island	<ul style="list-style-type: none"> - potential loss of area through coastal squeeze (rising sea levels and hard defences preventing migration inland) - potential loss of islands due to sea level rise - potential loss/ damage caused by flood risk management works 	Yes	<ul style="list-style-type: none"> - Intertidal area is part of the Medway Estuary and Marshes SSSI, SPA and Ramsar site (habitat for birds, plants and invertebrates) - Intertidal habitats 	<ul style="list-style-type: none"> - Local, national and international community 	Promote biodiversity opportunities and avoid net loss of intertidal habitat and associated species from coastal squeeze and flood risk management works	International	High	No	Yes	E1

Feature	Issues associated with Feature	Affect Policy ?	Why is the feature important?	Who benefits?	Objective ¹	Scale?	Importance?	Enough?	Replace ?	Rank
			<ul style="list-style-type: none"> - are UK BAP priority habitats - Intertidal habitats support rare species and are important for fish - Recreational activities e.g. Wildfowling on the intertidal habitat 		(Biodiversity, Flora and Fauna)					
Coastal Grazing marsh habitat (including habitat on the flood defence embankments) and reedbed	<ul style="list-style-type: none"> - potential loss of freshwater/ brackish habitat through flooding - potential opportunity to return to intertidal habitat - potential loss/ damage caused by flood risk management works 	Yes	<ul style="list-style-type: none"> - coastal grazing marsh and reedbed is part of the Medway Estuary and Marshes SSSI, SPA and Ramsar site (birds, plants and invertebrates in fields and ditches and on flood defence embankments) - Motney Hill is part of the Nor Marsh and 	<ul style="list-style-type: none"> - Local, national and international community 	Promote biodiversity opportunities and avoid net loss of coastal grazing marsh and associated species from flooding and flood risk management works (Biodiversity, Flora and Fauna)	International	High	No	Yes	E2

Feature	Issues associated with Feature	Affect Policy ?	Why is the feature important?	Who benefits?	Objective ¹	Scale?	Importance?	Enough?	Replace ?	Rank
			Motney Hill RSPB reserve - Grazing marsh at Upchurch is a SSSI - coastal grazing marsh is a UK BAP priority habitat and hosts protected and BAP priority species e.g. water voles							
Agricultural Land	<ul style="list-style-type: none"> - potential loss of land, farms and farm buildings through flooding - impacts on farm businesses and viability - devaluation of land at risk - anxiety and stress to owners at risk - change in achievement of prescriptions for agri-environment payments 	Yes	<ul style="list-style-type: none"> - represents substantial investment for individual owners - loss of existing agricultural land stock, mainly Grade 4 - economy/ employment through farming - contribution to local community - much of the area 	<ul style="list-style-type: none"> - Individual farmers and employees - Local community - National and international community in terms of management benefits for designated wildlife sites 	Prevent loss/ reduced potential of agricultural land from flooding (Land Use)	Local	High	Yes	Yes	C3

Feature	Issues associated with Feature	Affect Policy ?	Why is the feature important?	Who benefits?	Objective ¹	Scale?	Importance?	Enough?	Replace ?	Rank
			is within the North Kent Marshes Environmental Sensitive Area (ESA) and is managed for wildlife, landscape and heritage benefit. Agri-environment payments are made to farmers.							
Facilities for recreation on the river, and associated business, including moorings and slipways, access to foreshore and river (including for fishing)	<ul style="list-style-type: none"> - potential loss/ damage/ disruption to facilities and businesses through flooding - potential loss/ damage/ disruption caused by flood risk management measures 	Yes	<ul style="list-style-type: none"> - water based recreation on the River Medway is regionally significant - Recreation is important for quality of life - Facilities can bring visitors to the area and therefore benefit the local economy - Investment for 	<ul style="list-style-type: none"> - Local community and visitors 	<p>Prevent loss/ damage/ disruption to recreation and associated business from flooding and flood risk management works</p> <p>Seek opportunities to enhance features where appropriate</p> <p>(Population, Land</p>	Regional	High	No	No	R2

Feature	Issues associated with Feature	Affect Policy ?	Why is the feature important?	Who benefits?	Objective ¹	Scale?	Importance?	Enough?	Replace ?	Rank
			individual owners		Use, Material Assets, Infrastructure)					
Public footpath along shoreline, including on sea defence embankments, including Saxon Shore Way, community amenity land at Lower Halstow	<ul style="list-style-type: none"> - potential loss or disruption through flooding - potential loss or disruption caused by flood risk management measures 	Yes	<ul style="list-style-type: none"> - having access to the countryside and informal recreation (walking and cycling) is important for quality of life - The Saxon Shore Way is a long distance footpath between Gravesend and Rye 	<ul style="list-style-type: none"> - Local and regional community and visitors 	Prevent loss/ disruption to footpath from flooding and flood risk management works Seek opportunities to enhance features where appropriate (Population, Land Use)	Local	Medium	No	Yes	R3
Non-statutory known and unknown heritage	<ul style="list-style-type: none"> - potential loss through flooding - potential loss/ damage caused by flood risk management measures 	Yes	<ul style="list-style-type: none"> - the area has high potential for heritage value 	<ul style="list-style-type: none"> - Local and national community 	Prevent loss/ damage to heritage from flooding and flood risk management works or implement appropriate mitigation measures, including	Local	Medium	No	No	G4

Feature	Issues associated with Feature	Affect Policy ?	Why is the feature important?	Who benefits?	Objective ¹	Scale?	Importance?	Enough?	Replace ?	Rank
					<p>preservation of evidence by record</p> <p>Seek opportunities to enhance features where appropriate</p> <p>(Cultural Heritage, including architectural and archaeological heritage)</p>					
Landscape of the estuary and marshes, including existing defences	<ul style="list-style-type: none"> - potential degradation caused by flooding and associated impacts - potential adverse impacts caused by flood risk management measures e.g. construction of large sea defences 	Yes	<ul style="list-style-type: none"> - an attractive place to live and visit is important for quality of life and may bring visitors to the area which will have economic benefits - The Area is part of the North Kent Marshes Special Landscape Area - Defence 	<ul style="list-style-type: none"> - Local community and visitors 	<p>Prevent degradation of landscape quality and visual amenity from flooding/ risk management works</p> <p>Ensure consideration of existing defences on landscape and heritage grounds</p>	Sub-regional	High	No	No	L2

Feature	Issues associated with Feature	Affect Policy ?	Why is the feature important?	Who benefits?	Objective ¹	Scale?	Importance?	Enough?	Replace ?	Rank
			structures are part of the landscape character and may have heritage value as are part of flood defence and land use history		Seek opportunities to enhance features where appropriate (Landscape)					
Lower Halstow Conservation Area	<ul style="list-style-type: none"> - potential loss through flooding - potential loss/ damage caused by flood risk management measures 	Yes	<ul style="list-style-type: none"> - Heritage features contribute to the character of an area and are enjoyed by local community, they can also attract visitors to the area and therefore benefit the local economy 	<ul style="list-style-type: none"> - Local, and national community 	Prevent loss/ damage to Conservation Area from flooding and flood risk management works Seek opportunities to enhance features where appropriate (Cultural Heritage, including architectural and archaeological heritage)	National	High	No	No	G2
Lower Halstow	<ul style="list-style-type: none"> - potential loss through 	Yes	<ul style="list-style-type: none"> - The disused 	<ul style="list-style-type: none"> - Local 	Prevent loss/	Local	High	No	Yes	E4

Feature	Issues associated with Feature	Affect Policy ?	Why is the feature important?	Who benefits?	Objective ¹	Scale?	Importance?	Enough?	Replace ?	Rank
Brickworks	<ul style="list-style-type: none"> - flooding - potential loss/ damage caused by flood risk management measures 		brickworks have developed into important marsh, reedbed, grassland and scrub habitat and are a SNCI	community	damage to from flooding and flood risk management works Seek opportunities to enhance features where appropriate (Cultural Heritage, including architectural and archaeological heritage, Biodiversity)					
LOCATION: KINGSFERRY BRIDGE TO FAVERSHAM CREEK (SOUTH BANK OF SWALE)										
Residential properties at Kemsley, Sittingbourne, Conyer, Oare and Faversham	<ul style="list-style-type: none"> - potential loss of life or injury through flooding - potential loss of/ damage to housing through flooding - devaluation of properties at risk and neighbouring property 	Yes	<ul style="list-style-type: none"> - homes for people. Represents substantial investment for individual property owners - loss of existing 	<ul style="list-style-type: none"> - Individual residents and local community 	Prevent loss/ damage to residential properties from flooding or flood risk management works	Sub-regional	High	No	Yes	H2

Feature	Issues associated with Feature	Affect Policy ?	Why is the feature important?	Who benefits?	Objective ¹	Scale?	Importance?	Enough?	Replace ?	Rank
	<ul style="list-style-type: none"> - anxiety and stress to owners and occupiers at risk - impact on local community - potential impact on regeneration and future development objectives - potential impacts from flood risk management works e.g. disturbance, impact on views, damage to property 		<ul style="list-style-type: none"> housing stock, alternatives would have to be found by individuals - This area is part of the Thames Gateway - there are development proposals for Sittingbourne (mixed residential and commercial use). There is commercial development planned for North of Kemsley - potential impacts on community structure 		(Population and Human Health)					
Community facilities at Kemsley, Sittingbourne, Conyer, Oare and Faversham (such as churches, pubs,	<ul style="list-style-type: none"> - potential loss of life or injury through flooding - potential loss of/ damage to facilities through flooding - impact on local community 	Yes	<ul style="list-style-type: none"> - contribution to local community 	<ul style="list-style-type: none"> - Local community and visitors 	Prevent loss/ damage to community facilities from flooding or flood risk management works	Sub-regional	High	No	Yes	H2

Feature	Issues associated with Feature	Affect Policy ?	Why is the feature important?	Who benefits?	Objective ¹	Scale?	Importance?	Enough?	Replace ?	Rank
shops, schools, village halls)	<ul style="list-style-type: none"> - potential impacts from flood risk management works e.g. disruption, damage to facilities 				(Population and Human Health, Material Assets)					
Commercial properties at Kemsley, Sittingbourne, Conyer, Oare and Faversham	<ul style="list-style-type: none"> - potential loss of life or injury through flooding - potential loss of/ damage to businesses through flooding - devaluation of properties at risk and neighbouring property - anxiety and stress to owners at risk - impact on local community - potential impacts from flood risk management works e.g. disturbance, damage to property 	Yes	<ul style="list-style-type: none"> - investment of individual owners - contribution to local economy and employment - contribution to local community 	<ul style="list-style-type: none"> - Individual business owners - local community and visitors 	<p>Prevent loss/ damage to commercial properties from flooding or flood risk management works</p> <p>(Population and Human Health)</p>	Regional	High	No	Yes	C2
Industry along Milton Creek, Conyer Creek, Oare Creek and Faversham Creek, including wharfage	<ul style="list-style-type: none"> - potential loss of life or injury through flooding - potential loss of/ damage/ disruption to industrial sites through flooding - impacts on future 	Yes	<ul style="list-style-type: none"> - Contribution to economy and employment, including through commercial use of River Medway and Swale 	<ul style="list-style-type: none"> - Local and Regional Community 	<p>Prevent loss/ damage/ disruption to industrial areas from flooding</p> <p>(Population and</p>	Regional	High	No	Yes	C2

Feature	Issues associated with Feature	Affect Policy ?	Why is the feature important?	Who benefits?	Objective ¹	Scale?	Importance?	Enough?	Replace ?	Rank
	development and regeneration aims		<ul style="list-style-type: none"> - Investment of owners - Important strategic regeneration areas for commercial and housing development, leisure and tourism 		Human Health)					
Ridham Dock Industrial Area, including wharfage	<ul style="list-style-type: none"> - potential loss of life or injury through flooding - potential loss of/ damage/ disruption to industrial sites through flooding - impacts on future development and regeneration aims 	Yes	<ul style="list-style-type: none"> - Contribution to economy and employment, including through commercial use of River Medway - Investment of owners - Ridham Dock will continue to rely upon the Kingsferry Bridge opening. If there is a projected sea level rise, the available headroom 	<ul style="list-style-type: none"> - Local, Regional and National Community 	<p>Prevent loss/ damage/ disruption to Ridham Dock industrial area from flooding</p> <p>(Population and Human Health)</p>	Regional	High	No	Yes	C2

Feature	Issues associated with Feature	Affect Policy ?	Why is the feature important?	Who benefits?	Objective ¹	Scale?	Importance?	Enough?	Replace ?	Rank
			beneath the bridge will impact the types of boats							
Major infrastructure e.g. local roads, bridges e.g. Brent Swing Bridge, A249, railway line and station, electricity pylons, Sewage Treatment Works, services and communications	- potential loss/ damage/ disruption to infrastructure through flooding	Yes	- essential links for communities, businesses and industry	- Local, regional and national community	Prevent loss/ damage/ disruption to infrastructure from flooding (Infrastructure)	Regional	high	No	Yes	F2
Structures/ ancillary infrastructure abandoned through flooding	- Health and Safety and environmental hazards caused by flooding/ abandonment of property and associated services	No								
Agricultural Land at Coldharbour marshes, Tonge, Teynham , Luddenham	- potential loss of land, farms and farm buildings through flooding - impacts on farm businesses and viability - devaluation of land at risk	Yes	- represents substantial investment for individual owners - loss of existing agricultural land stock, grades 3 and 4	- Individual farmers and employees - Local community - National and international	Prevent loss/ reduced potential of agricultural land from flooding (Land Use)	Local	High	Yes	Yes	C3

Feature	Issues associated with Feature	Affect Policy ?	Why is the feature important?	Who benefits?	Objective ¹	Scale?	Importance?	Enough?	Replace ?	Rank
	<ul style="list-style-type: none"> - anxiety and stress to owners at risk - change in achievement of prescriptions for agri-environment payments 		<ul style="list-style-type: none"> - economy/ employment through farming - Fish farming takes place adjacent to the Swale at Baxted Farm - contribution to local community - much of the area is within the North Kent Marshes Environmental Sensitive Area (ESA) and is managed for wildlife, landscape and heritage benefit. Agri-environment payments are made to farmers. - There is a freshwater spring running down from Teynham 	<p>community in terms of management benefits for designated wildlife sites</p>						

Feature	Issues associated with Feature	Affect Policy ?	Why is the feature important?	Who benefits?	Objective ¹	Scale?	Importance?	Enough?	Replace ?	Rank
Intertidal Habitat, including Fowley island	<ul style="list-style-type: none"> - potential loss of area through coastal squeeze (rising sea levels and hard defences preventing migration inland) - potential loss/ damage caused by flood risk management works 	Yes	<ul style="list-style-type: none"> - Intertidal area is part of The Swale SSSI, SPA and Ramsar site (habitat for birds, plants and invertebrates) - Intertidal habitats are UK BAP priority habitats - Intertidal habitats support rare species and are important for fish - Recreational Activity e.g. Wildfowling on the Intertidal Habitat at Funton Botton, Stangate Creek, Chetney Marsh or Bedlams Botton 	<ul style="list-style-type: none"> - Local, national and international community 	<p>Promote biodiversity opportunities and avoid net loss of intertidal habitat and associated species from coastal squeeze and flood risk management works</p> <p>(Biodiversity, Flora and Fauna)</p>	International	High	No	Yes	E1
Coastal Grazing marsh habitat (including habitat on the flood)	<ul style="list-style-type: none"> - potential loss of freshwater/ brackish habitat through flooding - potential opportunity to 	Yes	<ul style="list-style-type: none"> - coastal grazing marsh and reedbed is part of The Swale 	<ul style="list-style-type: none"> - Local, national and international community 	<p>Promote biodiversity opportunities and avoid net loss of</p>	International	High	No	Yes	E2

Feature	Issues associated with Feature	Affect Policy ?	Why is the feature important?	Who benefits?	Objective ¹	Scale?	Importance?	Enough?	Replace ?	Rank
defence embankments)	<ul style="list-style-type: none"> - return to intertidal habitat - potential loss/ damage caused by flood risk management works 		<ul style="list-style-type: none"> - SSSI, SPA and Ramsar site (birds, plants and invertebrates in fields and ditches and on flood defence embankments) - coastal grazing marsh is a UK BAP priority habitat and hosts protected and BAP priority species e.g. water voles - Oare Marsh is a Kent Wildlife Trust Nature Reserve and Country Park - South Swale is a Kent Wildlife Trust Nature Reserve 		<ul style="list-style-type: none"> - coastal grazing marsh and associated species from flooding and flood risk management works - (Biodiversity, Flora and Fauna) 					
Conyer Pits	<ul style="list-style-type: none"> - potential loss of habitat through flooding - potential loss/ damage 	Yes	<ul style="list-style-type: none"> - Conyer Pits is an SNCI and hosts rare birds, plants 	<ul style="list-style-type: none"> - Local community 	<ul style="list-style-type: none"> - Promote biodiversity opportunities and 	Local	High	No	Yes	E4

Feature	Issues associated with Feature	Affect Policy ?	Why is the feature important?	Who benefits?	Objective ¹	Scale?	Importance?	Enough?	Replace ?	Rank
	caused by flood risk management works		and invertebrates		prevent loss/ damage to habitats and associated species from flooding and flood risk management works (Biodiversity, Flora and Fauna)					
Milton Creek	<ul style="list-style-type: none"> - potential loss of habitat through flooding - potential loss/ damage caused by flood risk management works 	Yes	<ul style="list-style-type: none"> - the intertidal and grassland and ditch habitats along Milton Creek are a SSSI 	Local community	Promote biodiversity opportunities and prevent loss/ damage to habitats and associated species from flooding and flood risk management works (Biodiversity, Flora and Fauna)	Local	High	No	Yes	E4
Potential future operation of Harty Ferry	<ul style="list-style-type: none"> - potential damage to site/ infrastructure required for Ferry through flooding - potential loss/ damage/ 	Yes	<ul style="list-style-type: none"> - There is the potential for a ferry to be brought back into 	<ul style="list-style-type: none"> - Local community and visitors 	Prevent damage/ disruption to any site/ infrastructure required by Harty	Local	Medium	No	No	R3

Feature	Issues associated with Feature	Affect Policy ?	Why is the feature important?	Who benefits?	Objective ¹	Scale?	Importance?	Enough?	Replace ?	Rank
	<p>disruption caused by flood risk management measures</p> <p>-</p>		<p>operation in the future, this would be a transport route between the Isle of Sheppey and the mainland</p>		<p>Ferry from flooding and flood risk management works</p> <p>(Material Assets, Infrastructure)</p>					
<p>Landscape of the estuary, marshes and town and industrial areas, including existing defences</p>	<ul style="list-style-type: none"> - potential degradation caused by flooding and associated impacts - potential adverse impacts caused by flood risk management measures e.g. construction of large sea defences 	<p>Yes</p>	<ul style="list-style-type: none"> - an attractive place to live and visit is important for quality of life and may bring visitors to the area which will have economic benefits - The Area is part of the North Kent Marshes Special Landscape Area - Defence structures are part of the landscape character and may have heritage value as are part of flood defence and land 	<ul style="list-style-type: none"> - Local community and visitors 	<p>Prevent degradation of landscape quality and visual amenity from flooding / risk management works</p> <p>Ensure consideration of existing defences on landscape and heritage grounds</p> <p>Seek opportunities to enhance features where appropriate</p> <p>(Landscape)</p>	<p>Sub-regional</p>	<p>High</p>	<p>No</p>	<p>No</p>	<p>L2</p>

Feature	Issues associated with Feature	Affect Policy ?	Why is the feature important?	Who benefits?	Objective ¹	Scale?	Importance?	Enough?	Replace ?	Rank
			use history							
Historic Faversham and historic creeks	<ul style="list-style-type: none"> - potential loss through flooding - potential loss/ damage caused by flood risk management measures 	Yes	<ul style="list-style-type: none"> - Heritage features contribute to the character of an area and are enjoyed by local community, they can also attract visitors to the area and therefore benefit the local economy 	<ul style="list-style-type: none"> - Local, and national community 	<p>Prevent loss/ damage to Conservation Area from flooding and flood risk management works</p> <p>Seek opportunities to enhance features where appropriate</p> <p>(Cultural Heritage, including architectural and archaeological heritage)</p>	National	High	No	No	G2
Non-statutory known and unknown heritage	<ul style="list-style-type: none"> - potential loss through flooding - potential loss/ damage caused by flood risk management measures 	Yes	<ul style="list-style-type: none"> - the area has high potential for heritage value 	<ul style="list-style-type: none"> - Local and national community 	<p>Prevent loss/ damage to heritage from flooding and flood risk management works or implement appropriate mitigation measures,</p>	Local	Medium	No	No	G4

Feature	Issues associated with Feature	Affect Policy ?	Why is the feature important?	Who benefits?	Objective ¹	Scale?	Importance?	Enough?	Replace ?	Rank
					including preservation of evidence by record Seek opportunities to enhance features where appropriate (Cultural Heritage, including architectural and archaeological heritage)					
Facilities for recreation on the river, and associated business, including quayside frontages, creekside paths, moorings and slipways, access to foreshore and river (including for fishing) Also Oare marsh	<ul style="list-style-type: none"> - potential loss/ damage/ disruption to facilities and businesses through flooding - potential loss/ damage/ disruption caused by flood risk management measures 	Yes	<ul style="list-style-type: none"> - Recreational use by yachts and other craft on the Swale between Kingsferry and Faversham - Recreation is important for quality of life - Facilities can bring visitors to the area and therefore benefit 	<ul style="list-style-type: none"> - Local community and visitors 	Prevent loss/ damage/ disruption to recreation and associated business from flooding and flood risk management works Seek opportunities to enhance features where appropriate	Local	High	No	No	R3

Feature	Issues associated with Feature	Affect Policy ?	Why is the feature important?	Who benefits?	Objective ¹	Scale?	Importance?	Enough?	Replace ?	Rank
Nature Reserve, including facilities for disabled people.			<ul style="list-style-type: none"> the local economy - Investment for individual owners 		(Population, Land Use, Material Assets, Infrastructure)					
Public footpaths, including along shoreline on embankments (Saxon Shore Way)	<ul style="list-style-type: none"> - potential loss or disruption through flooding - potential loss or disruption caused by flood risk management measures 	Yes	<ul style="list-style-type: none"> - having access to the countryside and informal recreation (walking and cycling) is important for quality of life - The Saxon Shore Way is a long distance footpath between Gravesend and Rye 	<ul style="list-style-type: none"> - Local and regional community and visitors 	<p>Prevent loss/ disruption to footpath from flooding and flood risk management works</p> <p>Seek opportunities to enhance features where appropriate</p> <p>(Population, Land Use)</p>	Local	Medium	No	Yes	R3
LOCATION: SHELLNESS TO KINGSFERRY BRIDGE (NORTH BANK OF SWALE)										
Agricultural Land	<ul style="list-style-type: none"> - potential loss of land, farms and farm buildings through 	Yes	<ul style="list-style-type: none"> - represents substantial investment for 	<ul style="list-style-type: none"> - Individual farmers and 	Prevent loss/ reduced potential of agricultural land	Local	High	Yes	Yes	C3

Feature	Issues associated with Feature	Affect Policy ?	Why is the feature important?	Who benefits?	Objective ¹	Scale?	Importance?	Enough?	Replace ?	Rank
	flooding - impacts on farm businesses and viability - devaluation of land at risk - anxiety and stress to owners at risk - change in achievement of prescriptions for agri-environment payments		individual owners - loss of existing agricultural land stock, grades 3 and 4 - economy/ employment through farming - contribution to local community - much of the area is within the North Kent Marshes Environmental Sensitive Area (ESA) and is managed for wildlife, landscape and heritage benefit. Agri-environment payments are made to farmers.	employees - Local community - National and international community in terms of management benefits for designated wildlife sites	from flooding (Land Use)					
Scattered Residential properties e.g. at Shellness,	- potential loss of life or injury through flooding - potential loss of/ damage to	Yes	- homes for people. Represents substantial	- Individual residents and local community	Prevent loss/ damage to residential properties from	Local	High	No	Yes	H3

Feature	Issues associated with Feature	Affect Policy ?	Why is the feature important?	Who benefits?	Objective ¹	Scale?	Importance?	Enough?	Replace ?	Rank
Leysdown, farms	<ul style="list-style-type: none"> - housing through flooding - devaluation of properties at risk and neighbouring property - anxiety and stress to owners and occupiers at risk - impact on local community - potential impacts from flood risk management works e.g. disturbance, impact on views, damage to property 		<ul style="list-style-type: none"> - investment for individual property owners - loss of existing housing stock, alternatives would have to be found by individuals - potential impacts on community structure 		flooding or flood risk management works (Population and Human Health)					
Major infrastructure including A249 and local roads, bridges e.g. Kingsferry Bridge, railway lines, electricity pylons	<ul style="list-style-type: none"> - potential loss/ damage/ disruption to infrastructure through flooding 	Yes	<ul style="list-style-type: none"> - essential links for communities, businesses and industry 	<ul style="list-style-type: none"> - Local, regional community and national 	Prevent loss/ damage/ disruption to infrastructure from flooding (Infrastructure)	Regional	High	No	Yes	F2
Structures/ ancillary infrastructure abandoned through flooding	<ul style="list-style-type: none"> - Health and Safety and environmental hazards caused by flooding/ abandonment of property and associated services 	No								
Intertidal Habitat	<ul style="list-style-type: none"> - potential loss of area through coastal squeeze (rising sea levels and hard 	Yes	<ul style="list-style-type: none"> - Intertidal area is part of The Swale SSSI, 	<ul style="list-style-type: none"> - Local, national and international 	Promote biodiversity opportunities and	International	High	No	Yes	E1

Feature	Issues associated with Feature	Affect Policy ?	Why is the feature important?	Who benefits?	Objective ¹	Scale?	Importance?	Enough?	Replace ?	Rank
	<ul style="list-style-type: none"> defences preventing migration inland) - potential loss/ damage caused by flood risk management works 		<ul style="list-style-type: none"> SPA and Ramsar site (habitat for birds, plants and invertebrates) - area includes Elmley National Nature Reserve and Elmley RSPB reserve - Intertidal habitats are UK BAP priority habitats - Intertidal habitats support rare species and are important for fish - Recreational Activities e.g. Widfowling 	community	avoid net loss of intertidal habitat and associated species from coastal squeeze and flood risk management works (Biodiversity, Flora and Fauna)					
Coastal Grazing marsh habitat (including habitat on the flood defence embankments)	<ul style="list-style-type: none"> - potential loss of freshwater/ brackish habitat through flooding - potential opportunity to return to intertidal habitat - potential loss/ damage caused by flood risk 	Yes	<ul style="list-style-type: none"> - coastal grazing marsh and reedbed is part of The Swale SSSI, SPA and Ramsar site (birds, plants and invertebrates in 	<ul style="list-style-type: none"> - Local, national and international community 	Promote biodiversity opportunities and avoid net loss of coastal grazing marsh and associated species from flooding and	International	High	No	Yes	E2

Feature	Issues associated with Feature	Affect Policy ?	Why is the feature important?	Who benefits?	Objective ¹	Scale?	Importance?	Enough?	Replace ?	Rank
	management works		<ul style="list-style-type: none"> fields and ditches and on flood defence embankments) - coastal grazing marsh is a UK BAP priority habitat and hosts protected and BAP priority species e.g. water voles - area includes Elmley National Nature Reserve and Elmley RSPB reserve 		flood risk management works (Biodiversity, Flora and Fauna)					
Landscape of the estuary and marshes, including existing defences	<ul style="list-style-type: none"> - potential degradation caused by flooding and associated impacts - potential adverse impacts caused by flood risk management measures e.g. construction of large sea defences 	Yes	<ul style="list-style-type: none"> - an attractive place to live and visit is important for quality of life and may bring visitors to the area which will have economic benefits - The Area is part of the North Kent 	<ul style="list-style-type: none"> - Local community and visitors 	Prevent degradation of landscape quality and visual amenity from flooding/ risk management works Ensure consideration of existing defences on landscape and	Sub-regional	High	No	No	L2

Feature	Issues associated with Feature	Affect Policy ?	Why is the feature important?	Who benefits?	Objective ¹	Scale?	Importance?	Enough?	Replace ?	Rank
			<p>Marshes Special Landscape Area and Undeveloped Coast</p> <ul style="list-style-type: none"> - Defence structures are part of the landscape character and may have heritage value as are part of flood defence and land use history 		<p>heritage grounds</p> <p>Seek opportunities to enhance features where appropriate</p> <p>(Landscape)</p>					
Medieval Moated site at Sayes Court	<ul style="list-style-type: none"> - potential loss through flooding - potential loss/ damage caused by flood risk management measures 	Yes	<ul style="list-style-type: none"> - This site is a Scheduled Ancient Monument - Heritage features contribute to the character of an area and are enjoyed by local community, they can also attract visitors to the area and therefore benefit 	<ul style="list-style-type: none"> - Local and national community 	<p>Prevent loss/ damage to SAM from flooding and flood risk management works</p> <p>Seek opportunities to enhance features where appropriate</p> <p>(Cultural Heritage,</p>	National	High	No	No	G2

Feature	Issues associated with Feature	Affect Policy ?	Why is the feature important?	Who benefits?	Objective ¹	Scale?	Importance?	Enough?	Replace ?	Rank
			the local economy		including architectural and archaeological heritage)					
Non-statutory known and unknown heritage	<ul style="list-style-type: none"> - potential loss due to flooding - potential loss/ damage caused by flood risk management measures 	Yes	<ul style="list-style-type: none"> - The area has a high potential for heritage value 	<ul style="list-style-type: none"> - Local and national community 	<p>Prevent loss/ damage to heritage or implement appropriate mitigation measures, including preservation of evidence by record</p> <p>Seek opportunities to enhance features where appropriate</p> <p>(Cultural Heritage, including architectural and archaeological heritage)</p>	Local	Medium	No	No	G4
Potential future operation of Harty	<ul style="list-style-type: none"> - potential damage to site/ infrastructure required for 	Yes	<ul style="list-style-type: none"> - There is the potential for a 	<ul style="list-style-type: none"> - Local community 	Prevent damage/ disruption to any	Local	Medium	No	No	R3

Feature	Issues associated with Feature	Affect Policy ?	Why is the feature important?	Who benefits?	Objective ¹	Scale?	Importance?	Enough?	Replace ?	Rank
Ferry	<ul style="list-style-type: none"> Ferry through flooding - potential loss/ damage/ disruption caused by flood risk management measures 		<ul style="list-style-type: none"> ferry to be brought back into operation in the future, this would be a transport route between the Isle of Sheppey and the mainland 	<ul style="list-style-type: none"> and visitors 	<ul style="list-style-type: none"> site/ infrastructure required by Harty Ferry from flooding and flood risk management works (Material Assets, Infrastructure) 					
Facilities for recreation on the Swale, and associated business, including paths, moorings, access to foreshore (including for fishing)	<ul style="list-style-type: none"> - potential loss/ damage/ disruption to facilities and businesses through flooding - potential loss/ damage/ disruption caused by flood risk management measures 	Yes	<ul style="list-style-type: none"> - Recreation is important for quality of life - Facilities can bring visitors to the area and therefore benefit the local economy - Investment for individual owners 	<ul style="list-style-type: none"> - Local community and visitors 	<ul style="list-style-type: none"> Prevent loss/ damage/ disruption to recreation and associated business from flooding and flood risk management works Seek opportunities to enhance features where appropriate (Population, Land Use, Material Assets, Infrastructure) 	Local	High	No	No	R3

Feature	Issues associated with Feature	Affect Policy ?	Why is the feature important?	Who benefits?	Objective ¹	Scale?	Importance?	Enough?	Replace ?	Rank
Public footpaths	<ul style="list-style-type: none"> - potential loss or disruption through flooding - potential loss or disruption caused by flood risk management measures 	Yes	<ul style="list-style-type: none"> - having access to the countryside and informal recreation is important for quality of life 	<ul style="list-style-type: none"> - Local community and visitors 	<p>Prevent loss/ disruption to footpath from flooding and flood risk management works</p> <p>Seek opportunities to enhance features where appropriate</p> <p>(Population, Land Use)</p>	Local	Medium	No	Yes	R3
LOCATION: KINGSFERRY BRIDGE TO SHEERNESS DOCKS										
Residential properties in Sheerness, Queenborough and Rushenden	<ul style="list-style-type: none"> - potential loss of life or injury through flooding - potential loss of/ damage to housing through flooding - devaluation of properties at risk and neighbouring property 	Yes	<ul style="list-style-type: none"> - homes for people. Represents substantial investment for individual property owners - Note feature 	<ul style="list-style-type: none"> - Individual residents and local community 	Prevent loss/ damage to residential properties from flooding or flood risk management works	Regional	High	No	Yes	H2

Feature	Issues associated with Feature	Affect Policy ?	Why is the feature important?	Who benefits?	Objective ¹	Scale?	Importance?	Enough?	Replace ?	Rank
	<ul style="list-style-type: none"> - anxiety and stress to owners and occupiers at risk - impact on local community - potential impacts from flood risk management works e.g. disturbance, impact on views, damage to property 		<ul style="list-style-type: none"> - ranked H2 as properties are not yet built - loss of existing housing stock, alternatives would have to be found by individuals - potential impacts on community structure - Impact on investor confidence in growth and regeneration areas 		(Population and Human Health)					
Commercial properties in Sheerness, Queenborough and Rushenden	<ul style="list-style-type: none"> - potential loss of life or injury through flooding - potential loss of/ damage to businesses through flooding - devaluation of properties at risk and neighbouring property - anxiety and stress to 	Yes	<ul style="list-style-type: none"> - investment of individual owners - contribution to local economy and employment - contribution to local community 	<ul style="list-style-type: none"> - Individual business owners - local community and visitors 	Prevent loss/ damage to commercial properties from flooding or flood risk management works (Population and	Regional	High	No	Yes	C2

Feature	Issues associated with Feature	Affect Policy ?	Why is the feature important?	Who benefits?	Objective ¹	Scale?	Importance?	Enough?	Replace ?	Rank
	<ul style="list-style-type: none"> owners at risk - impact on local community - potential impacts from flood risk management works e.g. disturbance, damage to property 				Human Health)					
Community facilities in Sheerness, Queenborough and Rushenden (such as churches, pubs, shops, schools, village halls)	<ul style="list-style-type: none"> - potential loss of life or injury through flooding - potential loss of/ damage to facilities through flooding - impact on local community - potential impacts from flood risk management works e.g. disruption, damage to facilities 	Yes	- contribution to local community	- Local community and visitors	Prevent loss/ damage to community facilities from flooding or flood risk management works (Population and Human Health, Material Assets)	Regional	High	No	Yes	H1
Sheerness Port	<ul style="list-style-type: none"> - potential loss of life or injury through flooding - potential loss of/ damage/ disruption to site through flooding - potential disruption to navigation - potential impacts on associated business/ 	Yes	- Sheerness port is one of the UK's deep water ports, being particularly important for the importation of a wide range of products and raw materials, major contribution to	- Local, Regional, National and International Community	Prevent loss/ damage/ disruption to Sheerness Port from flooding (Land Use, Material Assets, Infrastructure)	International	Medium	No	No	F1

Feature	Issues associated with Feature	Affect Policy ?	Why is the feature important?	Who benefits?	Objective ¹	Scale?	Importance?	Enough?	Replace ?	Rank
	<p>industries</p> <ul style="list-style-type: none"> - potential impacts on deep water berths caused by changes in estuary system 		<ul style="list-style-type: none"> - commercial use of the River Medway - investment of owners - contribution to economy and employment - former Royal Naval Dockyard 							
Rushenden Dredging Disposal site	<ul style="list-style-type: none"> - potential loss/ damage through flooding - potential loss/ damage through erosion of bunds causing material to re-enter estuary system 	Yes	<ul style="list-style-type: none"> - disposal site for material dredged from the estuary 	<ul style="list-style-type: none"> - Local community and users of the navigation 	<p>Prevent loss/ damage to Hoo Island from flooding or erosion of bunds</p> <p>(Land Use, Material Assets, Infrastructure)</p>	Sub-regional	Medium	No	Yes	C3
Major infrastructure, including Rushenden Sewage Treatment works, main railway line, A249, local roads, bridges and tracks, electricity	<ul style="list-style-type: none"> - potential loss/ damage/ disruption to infrastructure through flooding 	Yes	<ul style="list-style-type: none"> - essential links for communities, businesses and industry. These links form the only connection from the island to the mainland and if severed will 	<ul style="list-style-type: none"> - Local, regional and national community 	<p>Prevent loss/ damage/ disruption to infrastructure from flooding</p> <p>(infrastructure)</p>	National	High	No	Yes	F2

Feature	Issues associated with Feature	Affect Policy ?	Why is the feature important?	Who benefits?	Objective ¹	Scale?	Importance?	Enough?	Replace ?	Rank
pylons, services and communication links			cause significant problems, especially for emergency and essential services							
Structures/ ancillary infrastructure abandoned through flooding	- Health and Safety and environmental hazards caused by flooding/ abandonment of property and associated services	No								
Intertidal Habitat	- potential loss of area through coastal squeeze (rising sea levels and hard defences preventing migration inland) - potential loss/ damage caused by flood risk management works	Yes	- Intertidal area is part of the Medway Estuary and Marshes SSSI, SPA and Ramsar site (habitat for birds, plants and invertebrates) - Intertidal habitats are UK BAP priority habitats - Intertidal habitats support rare species and are important for fish - Recreational	- Local, national and international community	Promote biodiversity opportunities and avoid net loss of intertidal habitat and associated species from coastal squeeze and flood risk management works (Biodiversity, Flora and Fauna)	International	High	No	Yes	E1

Feature	Issues associated with Feature	Affect Policy ?	Why is the feature important?	Who benefits?	Objective ¹	Scale?	Importance?	Enough?	Replace ?	Rank
			activities on the intertidal habitat e.g. Wildfowling							
Coastal Grazing marsh habitat (including habitat on the flood defence embankments)	<ul style="list-style-type: none"> - potential loss of freshwater/ brackish habitat through flooding - potential opportunity to return to intertidal habitat - potential loss/ damage caused by flood risk management works 	Yes	<ul style="list-style-type: none"> - coastal grazing marsh and reedbed is part of the Medway Estuary and Marshes SSSI, SPA and Ramsar site (birds, plants and invertebrates in fields and ditches and on flood defence embankments) - coastal grazing marsh is a UK BAP priority habitat and hosts protected and BAP priority species e.g. water voles - area includes Elmley National Nature Reserve and Elmley 	<ul style="list-style-type: none"> - Local, national and international community 	Promote biodiversity opportunities and avoid net loss of coastal grazing marsh and associated species from flooding and flood risk management works (Biodiversity, Flora and Fauna)	International	High	No	Yes	E2

Feature	Issues associated with Feature	Affect Policy ?	Why is the feature important?	Who benefits?	Objective ¹	Scale?	Importance?	Enough?	Replace ?	Rank
			RSPB reserve							
Agricultural Land at Neatscourt and Minster Marshes	<ul style="list-style-type: none"> - potential loss of land, farms and farm buildings through flooding - impacts on farm businesses and viability - devaluation of land at risk - anxiety and stress to owners at risk - change in achievement of prescriptions for agri-environment payments - commercial development is taking place on part of the site 	Yes	<ul style="list-style-type: none"> - represents substantial investment for individual owners - loss of existing agricultural land stock, grades 3 and 4 - economy/ employment through farming - contribution to local community - much of the area is within the North Kent Marshes Environmental Sensitive Area (ESA) and is managed for wildlife, landscape and heritage benefit. Agri-environment payments are made to farmers. 	<ul style="list-style-type: none"> - Individual farmers and employees - Local community - National and international community in terms of management benefits for designated wildlife sites 	Prevent loss/ reduced potential of agricultural land from flooding (Land Use)	Local	High	Yes	Yes	C3

Feature	Issues associated with Feature	Affect Policy ?	Why is the feature important?	Who benefits?	Objective ¹	Scale?	Importance?	Enough?	Replace ?	Rank
			<ul style="list-style-type: none"> - Commercial development is important to the regeneration of Queenborough/ Rushenden (see below) 							
Queenborough/ Rushenden regeneration	<ul style="list-style-type: none"> - Major redevelopment of the area between Queenborough and Rushenden, fronting the Swale. To provide circa 1500 properties and possibly a marina. Development will also include new commercial premises. There will be infrastructure associated with the development. - Potential impacts on area through flooding - Requirement for appropriate defences to protect new property 	Yes	<ul style="list-style-type: none"> - Homes for people and contribution to economy and employment - Large redevelopment site within Swale and the wider Thames Gateway - Represents a major growth area for housing and commercial development - 	<ul style="list-style-type: none"> - Local and regional community 	Prevent loss to redevelopment area (residential, commercial and associated infrastructure) through flooding (Population and Human Health, Infrastructure)	Regional	High	No	Yes	H2
Registered shell fishery at Queenborough	<ul style="list-style-type: none"> - Potential loss of or damage to shellfishery through flooding or changes to 	Yes	<ul style="list-style-type: none"> - Loss of shell fishery area - Investment of 	<ul style="list-style-type: none"> - Local community 	Prevent loss/ damage to shell fishery from	Local	High	No	Yes	C3

Feature	Issues associated with Feature	Affect Policy ?	Why is the feature important?	Who benefits?	Objective ¹	Scale?	Importance?	Enough?	Replace ?	Rank
	estuary system - Potential loss/ damage caused by flood risk management works		owners - Contribution to economy and employment		flooding or flood risk management works (Water and Biodiversity)					
Sheerness Town centre	- potential loss through flooding - potential loss/ damage caused by flood risk management measures	Yes	- The town centre has many listed buildings, including the former Dockyard Church - Heritage features contribute to the character of an area and are enjoyed by local community, they can also attract visitors to the area and therefore benefit the local economy	- Local and national community	Prevent loss/ damage to area from flooding and flood risk management works Seek opportunities to enhance features where appropriate (Population and Human Health)	National	High	No	No	G2
Queenborough Conservation Area, including Queenborough	- potential loss through flooding - potential loss/ damage	Yes	- Queenborough is a Conservation Area and Queenborough	- Local and national community	Prevent loss/ damage to Conservation Area and SAM from	National	High	No	No	G2

Feature	Issues associated with Feature	Affect Policy ?	Why is the feature important?	Who benefits?	Objective ¹	Scale?	Importance?	Enough?	Replace ?	Rank
Castle	caused by flood risk management measures		<p>Castle is a Scheduled Ancient Monument</p> <ul style="list-style-type: none"> - Heritage features contribute to the character of an area and are enjoyed by local community, they can also attract visitors to the area and therefore benefit the local economy 		<p>flooding and flood risk management works</p> <p>Seek opportunities to enhance features where appropriate</p> <p>(Cultural Heritage, including architectural and archaeological heritage)</p>					
Non-statutory known and unknown heritage	<ul style="list-style-type: none"> - potential loss due to flooding - potential loss/ damage caused by flood risk management measures 	Yes	<ul style="list-style-type: none"> - The area has a high potential for heritage value 	<ul style="list-style-type: none"> - Local and national community 	<p>Prevent loss/ damage to heritage or implement appropriate mitigation measures, including preservation of evidence by record</p> <p>Seek opportunities to enhance</p>	Local	Medium	No	No	G4

Feature	Issues associated with Feature	Affect Policy ?	Why is the feature important?	Who benefits?	Objective ¹	Scale?	Importance?	Enough?	Replace ?	Rank
					<p>features where appropriate</p> <p>(Cultural Heritage, including architectural and archaeological heritage)</p>					
Landscape of the estuary, marshes and urban areas, including existing defences	<ul style="list-style-type: none"> - potential degradation caused by flooding and associated impacts - potential adverse impacts caused by flood risk management measures e.g. construction of large sea defences 	Yes	<ul style="list-style-type: none"> - an attractive place to live and visit is important for quality of life and may bring visitors to the area which will have economic benefits - The Area is part of the North Kent Marshes Special Landscape Area and Undeveloped Coast - Defence structures are part of the landscape 	<ul style="list-style-type: none"> - Local community and visitors 	<p>Prevent degradation of landscape quality and visual amenity from flooding/ risk management works</p> <p>Ensure consideration of existing defences on landscape and heritage grounds</p> <p>Seek opportunities to enhance features where appropriate</p>	Sub-regional	High	No	No	L2

Feature	Issues associated with Feature	Affect Policy ?	Why is the feature important?	Who benefits?	Objective ¹	Scale?	Importance?	Enough?	Replace ?	Rank
			character and may have heritage value as are part of flood defence and land use history		(Landscape)					
Facilities for recreation in the estuary, and associated business, including paths, moorings, access to foreshore (including for fishing), including at Queenborough Creek	<ul style="list-style-type: none"> - potential loss/ damage/ disruption to facilities and businesses through flooding - potential loss/ damage/ disruption caused by flood risk management measures 	Yes	<ul style="list-style-type: none"> - Recreation is important for quality of life - Facilities can bring visitors to the area and therefore benefit the local economy - Investment for individual owners 	<ul style="list-style-type: none"> - Local community and visitors 	<p>Prevent loss/ damage/ disruption to recreation and associated business from flooding and flood risk management works</p> <p>Seek opportunities to enhance features where appropriate</p> <p>(Population, Land Use, Material Assets, Infrastructure)</p>	Regional	High	No	No	R2
Public footpaths	<ul style="list-style-type: none"> - potential loss or disruption through flooding - potential loss or disruption 	Yes	<ul style="list-style-type: none"> - having access to the countryside and informal 	<ul style="list-style-type: none"> - Local community and visitors 	Prevent loss/ disruption to footpath from	Local	Medium	No	Yes	R3

Feature	Issues associated with Feature	Affect Policy ?	Why is the feature important?	Who benefits?	Objective ¹	Scale?	Importance?	Enough?	Replace ?	Rank
	caused by flood risk management measures -		recreation is important for quality of life		flooding and flood risk management works Seek opportunities to enhance features where appropriate (Population, Land Use)					