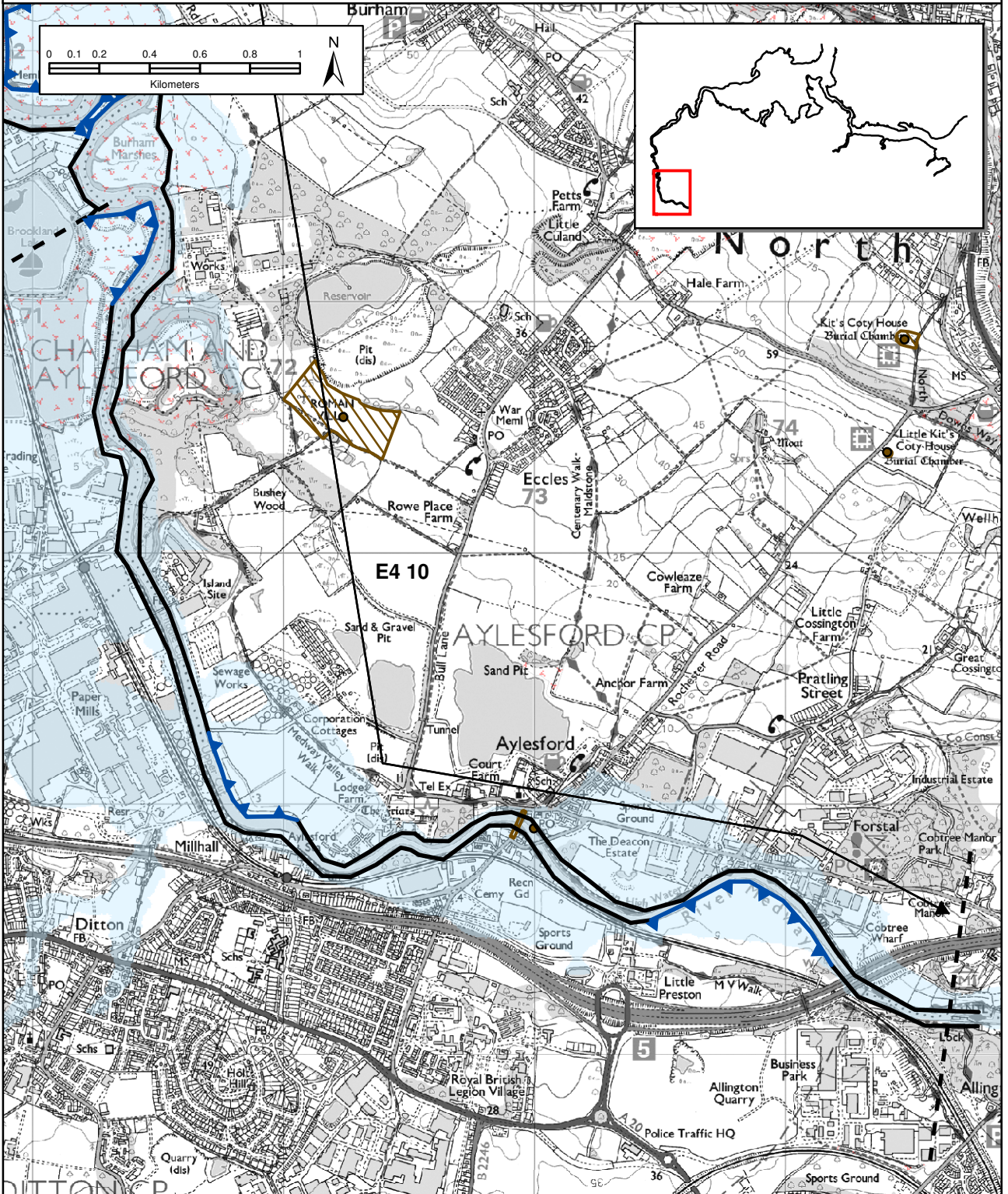


# Medway Estuary and Swale Shoreline Management Plan

## Policy Unit E4 10: Allington Lock to north Wouldham (Part 1 of 2)



### Policy

From Present Day:	Medium-Term:	Long-Term:
Hold the Line	Managed Realignment with localised Hold the Line	Managed Realignment with localised Hold the Line

- Indicative erosion zone up to 2025
- Indicative erosion zone up to 2055
- Indicative erosion zone up to 2105
- Policy Unit Boundary
- Policy Unit Extent
- Current shoreline
- Hold the Line
- Indicative realignment location\*

\* Actual realignment extent and location will be the subject of further studies.

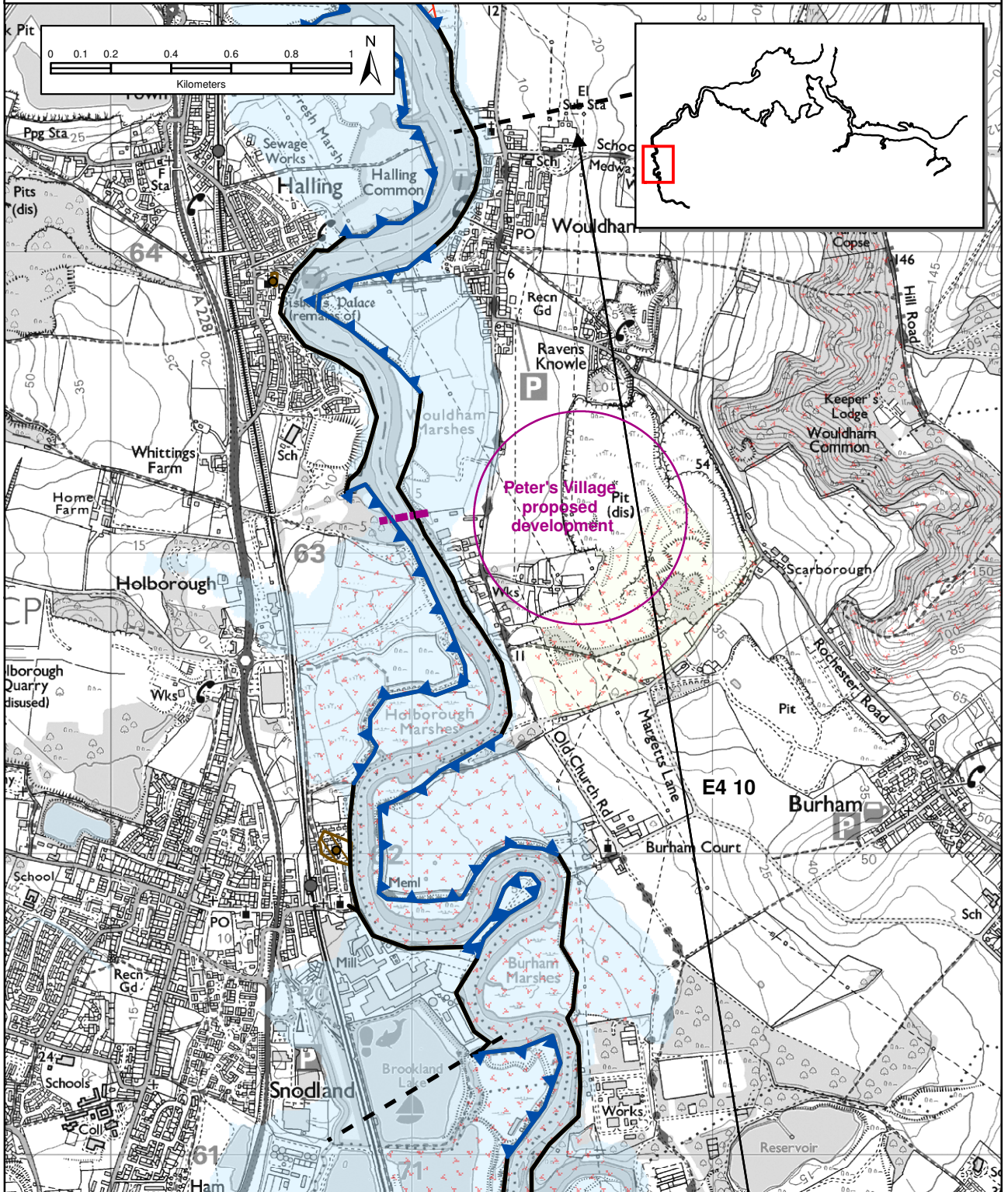
### Environmental/Cultural Heritage

- National Nature Conservation Designation
- International Nature Conservation Designation
- Important Heritage Sites (Scheduled Monuments)
- 2005 Indicative floodplain © Environment Agency

This map is based upon Ordnance Survey material with the permission of Ordnance Survey on behalf of the Comptroller of Her Majesty's Stationery Office © Crown copyright. Unauthorised reproduction infringes Crown copyright and may lead to prosecution or civil proceedings. Environment Agency, Licence number 100026380.2007.

# Medway Estuary and Swale Shoreline Management Plan

## Policy Unit E4 10: Allington Lock to north Wouldham (Part 2 of 2)



### Policy

From Present Day:	Medium-Term:	Long-Term:
Hold the Line	Managed Realignment with localised Hold the Line	Managed Realignment with localised Hold the Line

- Indicative erosion zone up to 2025
- Indicative erosion zone up to 2055
- Indicative erosion zone up to 2105

- Proposed river crossing
- Proposed development
- Indicative realignment location\*

- Policy Unit Boundary
- Policy Unit Extent
- Current shoreline
- Hold the Line

### Environmental/Cultural Heritage

- National Nature Conservation Designation
- International Nature Conservation Designation

\* Actual realignment extent and location will be the subject of further studies.

- Important Heritage Sites (Scheduled Monuments)
- 2005 Indicative floodplain © Environment Agency

This map is based upon Ordnance Survey material with the permission of Ordnance Survey on behalf of the Comptroller of Her Majesty's Stationery Office © Crown copyright. Unauthorised reproduction infringes Crown copyright and may lead to prosecution or civil proceedings. Environment Agency, Licence number 100026380.2007.

<b>Location reference:</b>	<b>Allington Lock to North Wouldham</b>
<b>Policy Unit reference:</b>	<b>E4 10</b>

### SUMMARY OF THE PLAN AND JUSTIFICATION

#### Plan:

*The frontage comprises the urban areas of historic Aylesford and Millhall to the south and areas of agricultural land and freshwater habitats interspersed with small settlements towards the north. Outline planning consent has been granted to a housing and community development (Peters Village) and a new Medway River crossing west of Peters Pit. The estuary channel is narrow and fluvial in form along the whole frontage.*

*In the short to medium term the plan is to continue protecting the environmental habitats, agricultural land, built assets and flood risk areas. This will allow further studies to consider the viability of multiple areas of managed realignment along the frontage and to define the exact standard and alignment of defences for this frontage. The recommended long-term plan is to allow the shoreline to realign to a more naturally functioning system where possible, creating brackish habitat in some locations, whilst continuing to provide flood defence to remaining urban and environmental assets and flood risk areas. It is recognised that this section of shoreline provides an opportunity for localised environmental enhancement and habitat creation through localised managed realignment.*

*No specific realignment positions have been identified for the SMP. Further studies will be required to investigate and define the extent, location and implementation of the realignment i.e. the best technical, environmental and economic option that best manages flood risk. These studies will also need to investigate the exact standard and alignment of any defences for this frontage*

*The aim of these policies is to work towards achieving a more naturally functioning estuary and the creation of important brackish and saline habitats whilst at the same time creating a shoreline with a reduced requirement for defence maintenance.*

#### Preferred policies to implement Plan:

**From present day:** The present day policy for Allington Lock to North Wouldham is **hold the line** by maintaining existing defences to provide protection to residential, economic and heritage assets, agricultural land and freshwater habitats. Intertidal areas will remain stable as sediment supply is expected to meet demand in the Medway estuary throughout this epoch.

Maintaining the existing defence line in the short term will allow further studies to examine the viability of managed realignment in multiple areas along the section of the Medway between Medway Bridge and Allington Lock.

---

**Medium-term:** The medium term policy changes to **managed realignment with localised hold the line**. The detailed alignment, will be subject to further study to

---

*The above provides the local details in respect of the SMP-wide Plan; therefore the above must be read in the context of the wider-scale issues and policy implications, as presented in the preceding sections and Appendices to this Plan document.*

**Location reference:** Allington Lock to North Wouldham

**Policy Unit reference:** E4 10

address uncertainties and confirm the best technical, environmental and economic option to manage the estuary. The policy will be implemented by maintaining and upgrading the current defence line along the majority of the frontage and by constructing new realigned secondary defences at a set-back position, ensuring continued protection to built and environmental assets. This will require re-routing of shoreline footpaths in localised areas. Localised managed realignment will allow some inundation and will help reduce the probability of uncontrolled large scale flooding.

No specific realignment positions have been identified for the SMP. However, an affect on designated freshwater habitat may occur, dependant on realignment extents. These impacts will need to be managed in line with the Habitats Regulations Assessment (Appendix J) and the Regional Habitat Creation Programme.

---

**Long-term:**

The long term policy is to continue allowing the shoreline to realign in places, whilst continuing to provide protection to assets and low lying areas, under a policy of **managed realignment with localised hold the line**. Defences will require further maintenance and potentially upgrading throughout this period as sea levels rise and fluvial flows increase with climate change. Consequently, the channel may deepen and erosion may become more prevalent, especially on the outside of meanders and in confined areas. However, managed realignment in adjacent areas may help to accommodate flood waters and reduce pressure on defences in these locations.

Environmental transitions will be prominent during this epoch as brackish and intertidal habitats replace some of the freshwater interests. This may require specific management to maximise the environmental benefits and limit potential habitat impacts.

**Location reference:** *Allington Lock to North Wouldham*

**Policy Unit reference:** *E4 10*

### IMPLICATIONS OF THE PLAN FOR THIS LOCATION

Time Period	Management Activities	Material Assets, Infrastructure & Land Use	Landscape	Natural Environment	Historic Environment	Population (Amenity & Recreational Use and Human Health)
0-20 years	Undertake engineering works to hold the defence line.	Defences will continue to provide the appropriate standard of protection to built assets, infrastructure and agricultural land during this period.	Designated landscape of the industrial area maintained.	No loss of designated habitats.  Protection of freshwater habitats and rough grassland at SNCI and marshes	No loss of Aylesford Bridge SM or damage to Aylesford Conservation Area.	Defences will continue to provide the appropriate standard of protection to built assets.  No loss of recreation features.
20-50 years	Undertake engineering works to defences to Hold the Line of sections of defences that protect key assets and construct secondary defences in suitable locations.	Defences will continue to provide the appropriate standard of protection to built assets and infrastructure.  Areas of land affected by managed realignment will become intertidal.  MR may impact on future commercial traffic in the estuary.	Designated estuary landscape will be maintained. However, some features will change through realignment. Potential for a more 'natural' shoreline.	Dependant on MR extent, potential effect on nationally designated freshwater habitat and nationally important (BAP) habitat at Burham.  Transition of habitats from freshwater to brackish to saline in realigned areas.	No loss of SMs or damage to Aylesford Conservation Area.	Defences will continue to provide the appropriate standard of protection to built assets.  Re-routing of footpaths – Medway Valley Walk where MR is implemented.
50-100 years	Undertake engineering works to defences to Hold the Line of sections of defences protecting key	Defences will continue to provide the appropriate standard of protection to built assets and	Designated estuary landscape will be maintained, however, some features will change	Establishment of brackish and saline habitats in realigned areas.	No loss of SMs or damage to Aylesford Conservation Area.	No loss of recreation features.

*The above provides the local details in respect of the SMP-wide Plan; therefore the above must be read in the context of the wider-scale issues and policy implications, as presented in the preceding sections and Appendices to this Plan document.*

	assets. Maintain realigned defences.	infrastructure. Areas of land affected by managed realignment will become intertidal. MR may impact on future commercial traffic in the estuary.	through realignment. Potential for a more 'natural' shoreline.			
--	--------------------------------------	--	---	--	--	--

---

*The above provides the local details in respect of the SMP-wide Plan; therefore the above must be read in the context of the wider-scale issues and policy implications, as presented in the preceding sections and Appendices to this Plan document.*