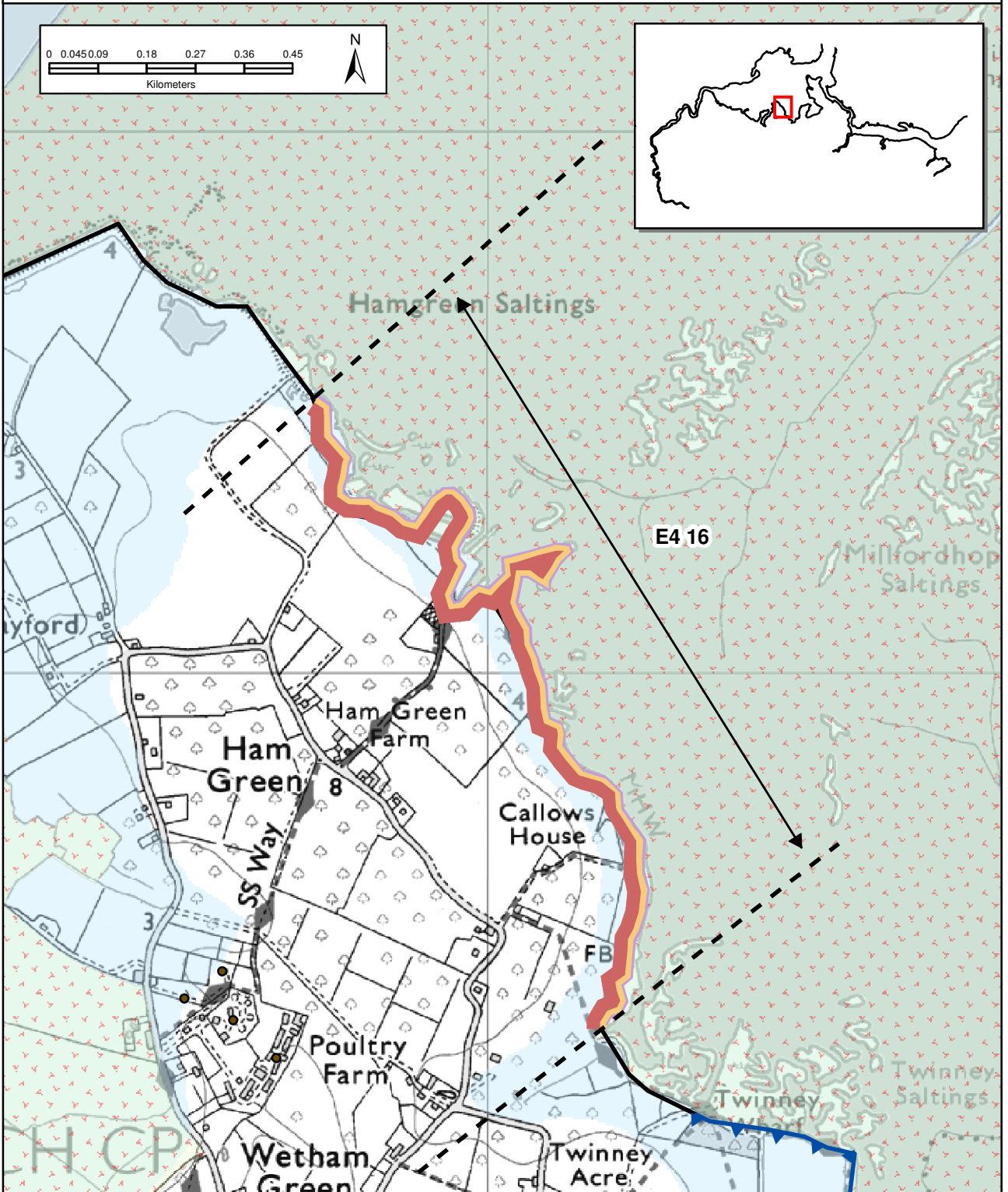





Medway Estuary and Swale Shoreline Management Plan


Policy Unit E4 16: Ham Green to east of Upchurch







Policy

From Present Day:	Medium-Term:	Long-Term:
No Active Intervention	No Active Intervention	No Active Intervention

-  Indicative erosion zone up to 2025
-  Indicative erosion zone up to 2055
-  Indicative erosion zone up to 2105

 Indicative realignment location*

* Actual realignment extent and location will be the subject of further studies.

-  Policy Unit Boundary
-  Policy Unit Extent
-  Current shoreline
-  Hold the Line

Environmental/Cultural Heritage

-  National Nature Conservation Designation
-  International Nature Conservation Designation
-  Important Heritage Sites (Scheduled Monuments)
-  2005 Indicative floodplain © Environment Agency

This map is based upon Ordnance Survey material with the permission of Ordnance Survey on behalf of the Comptroller of Her Majesty's Stationery Office © Crown copyright. Unauthorised reproduction infringes Crown copyright and may lead to prosecution or civil proceedings. Environment Agency, Licence number 100026380.2007.

Location reference: Ham Green to East of Upchurch

Policy Unit reference: E4 16

SUMMARY OF THE PLAN AND JUSTIFICATION

Plan:

The short length of high land between Ham Green and east of Upchurch comprises Grade 1 agricultural land interspersed with isolated properties. The Saxon Shore Way follows the shoreline along the whole of this frontage. Intertidal saltmarsh and mudflat habitats seaward of defences are nationally and internationally designated for their ecological importance.

The long term policy for this unit is to allow natural erosion of the frontage as the land is elevated and there are a minimal number of built assets along this frontage. It is considered unsustainable and uneconomic to continue to protect the frontage in the long term.

Preferred policies to implement Plan:

From present day: The present day policy for Ham Green to east of Upchurch is **no active intervention**, by allowing defences to fail to allow natural processes to operate. This will maintain the ecological value of intertidal habitats and result in a free functioning shoreline.

Evolution of intertidal areas will be dependant on sediment supply. It is predicted that in this section of the estuary, saltmarsh will continue to accrete or remain stable, as sediment supply in the estuary is expected to meet demand throughout this epoch.

Medium-term: The medium term policy is to continue allowing natural processes under a policy of **no active intervention**. The shoreline will become more exposed with sea level rise and increased storminess. However, saltmarsh areas along the frontage will continue to provide a degree of protection to the undefended shoreline.

Evolution of intertidal areas will continue as per the previous epoch, remaining stable as sediment supply is expected to be able to meet demand throughout this epoch. However, erosion may become more prevalent along the seaward edge of the marshes as sea levels rise. The rising land along this frontage will limit landward migration of intertidal habitat and may ultimately lead to coastal squeeze.

The integrity of one property and greenhouses on the shoreline at Ham Green may be lost, towards the end of this epoch.

The above provides the local details in respect of the SMP-wide Plan; therefore the above must be read in the context of the wider-scale issues and policy implications, as presented in the preceding sections and Appendices to this Plan document.

Location reference: Ham Green to East of Upchurch

Policy Unit reference: E4 16

Long-term: The long term policy is **no active intervention**. This policy will allow the shoreline to continue to function and evolve freely, maintaining the ecological value of the fronting marshes. The shoreline will be at increased risk of erosion during this period as sea levels rise and saltmarsh is eroded due to a decrease in sediment supply to the estuary. This, however, will result in the reactivation of soft cliffs along the frontage which will become an additional supply of sediment to the estuary in the long term.

There is potential for the loss of the property and greenhouses at Ham Green as the shoreline erodes.

Location reference: *Ham Green to East of Upchurch*

Policy Unit reference: *E4 16*

IMPLICATIONS OF THE PLAN FOR THIS LOCATION

Time Period	Management Activities	Material Assets, Infrastructure & Land Use	Landscape	Natural Environment	Historic Environment	Population (Amenity & Recreational Use and Human Health)
0-20 years	Natural erosion of defences and high land.	No loss of built assets within this epoch.	Designated landscape will be maintained.	No net loss of internationally designated intertidal habitat and nationally important (BAP) habitat.	Potential loss of buried unknown heritage.	No loss of property within this epoch. Erosion may cause damage to pathway. Re-rerouting of the Saxon Shore Way.
20-50 years	Natural erosion of high land.	Loss of Grade 1 agricultural land (approximately 0.5m/yr).	Designated landscape will be maintained.	No net loss of internationally designated intertidal habitat and nationally important (BAP) habitat.	Potential loss of buried unknown heritage.	Potential effect on one property and green houses at Ham Green. Erosion may lead to the loss of pathway. Rerouting of the Saxon Shoreline Way.
50-100 years	Natural erosion of high land.	Further loss of agricultural land (approximately 0.5m/yr).	Designated landscape will be maintained.	Effect on internationally designated intertidal habitat and nationally important (BAP) habitat with coastal squeeze as sea levels rise.	Potential loss of buried unknown heritage.	Potential loss of property and green houses at Ham Green. Erosion may lead to the loss of pathway. Rerouting of the Saxon Shoreline Way.

The above provides the local details in respect of the SMP-wide Plan; therefore the above must be read in the context of the wider-scale issues and policy implications, as presented in the preceding sections and Appendices to this Plan document.