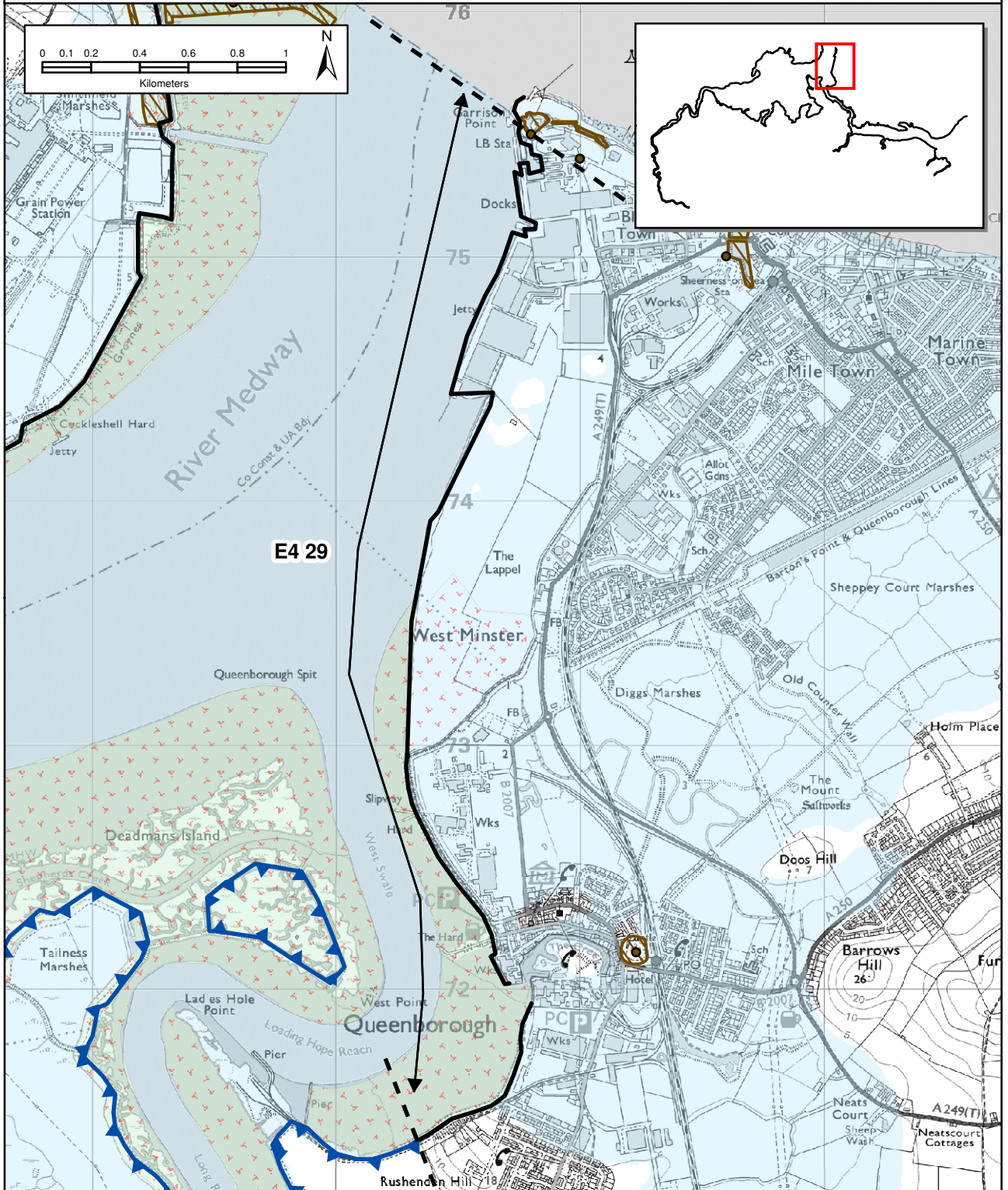





Medway Estuary and Swale Shoreline Management Plan


Policy Unit E4 29: Rushenden to Sheerness



Policy


From Present Day:	Medium-Term:	Long-Term:
Hold the Line	Hold the Line	Hold the Line


-  Indicative erosion zone up to 2025
-  Indicative erosion zone up to 2055
-  Indicative erosion zone up to 2105

 Indicative realignment location*

* Actual realignment extent and location will be the subject of further studies.


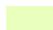
 Policy Unit Boundary


 Policy Unit Extent

 Current shoreline

 Hold the Line (0-100 yrs)

Environmental/Cultural Heritage

-  National Nature Conservation Designation
-  International Nature Conservation Designation

 Important Heritage Sites (Scheduled Monuments)

 2005 Indicative floodplain © Environment Agency

This map is based upon Ordnance Survey material with the permission of Ordnance Survey on behalf of the Comptroller of Her Majesty's Stationery Office © Crown copyright. Unauthorised reproduction infringes Crown copyright and may lead to prosecution or civil proceedings. Environment Agency, Licence number 100026380.2007.

Location reference:	Rushenden to Sheerness
Policy Unit reference:	E4 29

SUMMARY OF THE PLAN AND JUSTIFICATION

Plan:

Rushenden to Sheerness marks the western extremity of the Isle of Sheppey and the interface between the Medway estuary and the open coast (Policy Unit 4a 02: Garrison Point to Minster – Isle of Grain to South Foreland, SMP2. The preferred policy for the adjacent open coast frontage is Hold the Line in all three epochs). This section of the shoreline comprises the urban areas of Rushenden and Queenborough, which is of national heritage importance, the internationally important port of Sheerness and regionally important strategic links. Intertidal habitats between Rushenden and north of Queenborough are internationally designated.

The long term plan is to continue protecting the developments including the residential, commercial and industrial assets. Under this policy some localised coastal squeeze impacts will be experienced in later epochs. However, these are countered by habitat growth within the middle reaches of the estuary and the recommended policy is deemed technically and environmentally viable, for the duration of the Shoreline Management Plan.

Preferred policies to implement Plan:

From present day: The present day policy for Rushenden to Sheerness is to continue to **hold the line** by maintaining and improving the existing defences to protect the significant assets contained within the towns and port; including assets that are important to the national economy and national heritage. This will be achieved by continuing to maintain and where required upgrade or replace existing defences, which comprise embankments, seawalls and quay walls. Intertidal areas will be subject to continued erosion in confined sections of the channel.

Medium-term: The medium term policy is to continue to **hold the line**. This will be achieved by maintaining and upgrading the defence structures to continue protection to the significant built assets from sea level rise. Intertidal areas will continue to erode in confined sections of the channel, as such, natural dredging of the channel will be beneficial to navigation.

Long-term: The significant built assets along this frontage dictate that the long-term policy is **hold the line**. To accomplish this and to keep pace with sea level rise defences will need to be maintained and upgraded. Thus the character of some sections of this frontage is likely to change to one that is purely defensive, e.g. at Queenborough, which may in the long term affect the landscape value of the Conservation area.

The above provides the local details in respect of the SMP-wide Plan; therefore the above must be read in the context of the wider-scale issues and policy implications, as presented in the preceding sections and Appendices to this Plan document.

Location reference: **Rushenden to Sheerness**

Policy Unit reference: **E4 29**

The intertidal area will narrow further with coastal squeeze in constrained areas.

Location reference: *Rushenden to Sheerness*

Policy Unit reference: *E4 29*

IMPLICATIONS OF THE PLAN FOR THIS LOCATION

Time Period	Management Activities	Material Assets, Infrastructure & Land Use	Landscape	Natural Environment	Historic Environment	Population (Amenity & Recreational Use and Human Health)
0-20 years	Undertake engineering works to hold the defence line.	Defences will continue to provide the appropriate standard of protection to built assets, infrastructure and agricultural land during this period.	Designated landscape of the industrial area maintained.	Effect on internationally designated intertidal habitat and nationally important (BAP) habitat due to coastal squeeze in confined channel locations. Potential coastal squeeze/ accelerated erosion in constrained reach of Medway Estuary, with associated failure of WFD objective 2, "no changes that will cause failure to meet surface water "good" ecological status or potential (where potential relates to HMWB or AWB) or result in a deterioration of surface water ecological status/potentials".	Potential loss of unknown heritage buried in intertidal zone.	No loss of properties or community facilities. Footpaths, amenity and recreational features will remain.
20-50 years	Undertake engineering works to hold the defence line.	Defences will continue to provide the appropriate standard of protection to built assets, infrastructure	Designated landscape of the industrial area maintained but with increased defences. Larger	Effect on internationally designated intertidal habitat and nationally important (BAP) habitat	Potential loss of unknown heritage buried in intertidal zone.	No loss of properties or community facilities. Footpaths, amenity and

The above provides the local details in respect of the SMP-wide Plan; therefore the above must be read in the context of the wider-scale issues and policy implications, as presented in the preceding sections and Appendices to this Plan document.

Location reference: *Rushenden to Sheerness*
Policy Unit reference: *E4 29*

IMPLICATIONS OF THE PLAN FOR THIS LOCATION

Time Period	Management Activities	Material Assets, Infrastructure & Land Use	Landscape	Natural Environment	Historic Environment	Population (Amenity & Recreational Use and Human Health)
		and agricultural land during this period.	defences may affect landscape character.	<p>due to coastal squeeze in confined channel locations.</p> <p>No loss of internationally designated coastal grazing marsh.</p> <p>Potential coastal squeeze/ accelerated erosion in constrained reach of Medway Estuary, with associated failure of WFD objective 2, "no changes that will cause failure to meet surface water "good" ecological status or potential (where potential relates to HMWB or AWB) or result in a deterioration of surface water ecological status/potentials".</p>		recreational features will remain.
50-100 years	Undertake engineering works to hold the defence line.	Defences will continue to provide the appropriate standard of protection to built assets, infrastructure	Designated landscape of the industrial area maintained but with increased defences. Larger	Effect on internationally designated intertidal habitat and nationally important (BAP) habitat	Potential loss of unknown heritage buried in intertidal zone.	<p>No loss of properties or community facilities.</p> <p>Footpaths, amenity and recreational features will</p>

The above provides the local details in respect of the SMP-wide Plan; therefore the above must be read in the context of the wider-scale issues and policy implications, as presented in the preceding sections and Appendices to this Plan document.

Location reference: *Rushenden to Sheerness*
Policy Unit reference: *E4 29*

IMPLICATIONS OF THE PLAN FOR THIS LOCATION

Time Period	Management Activities	Material Assets, Infrastructure & Land Use	Landscape	Natural Environment	Historic Environment	Population (Amenity & Recreational Use and Human Health)
		and agricultural land during this period.	defences may affect landscape character.	due to coastal squeeze in confined channel locations. No loss of internationally designated coastal grazing marsh. Potential coastal squeeze/ accelerated erosion in constrained reach of Medway Estuary, with associated failure of WFD objective 2, "no changes that will cause failure to meet surface water "good" ecological status or potential (where potential relates to HMWB or AWB) or result in a deterioration of surface water ecological status/potentials".		remain.

The above provides the local details in respect of the SMP-wide Plan; therefore the above must be read in the context of the wider-scale issues and policy implications, as presented in the preceding sections and Appendices to this Plan document.