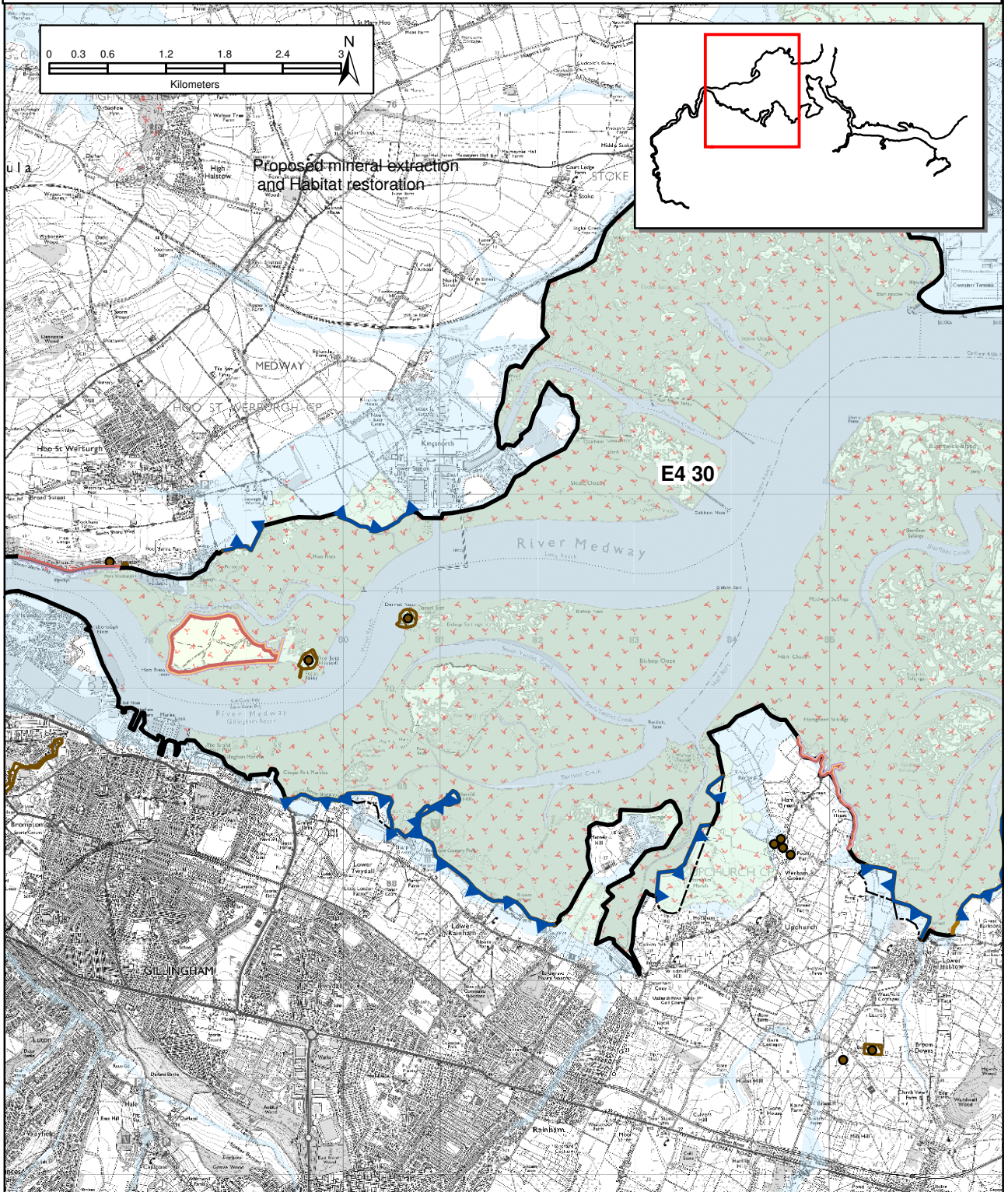


Medway Estuary and Swale Shoreline Management Plan

Policy Unit E4 30a: Medway Islands



Policy

From Present Day:	Medium-Term:	Long-Term:
No Active Intervention	No Active Intervention	No Active Intervention

- Indicative erosion zone up to 2025
- Indicative erosion zone up to 2055
- Indicative erosion zone up to 2105
- Indicative realignment location*
- Policy Unit Boundary
- Current shoreline
- Hold the Line

* Actual realignment extent and location will be the subject of further studies.

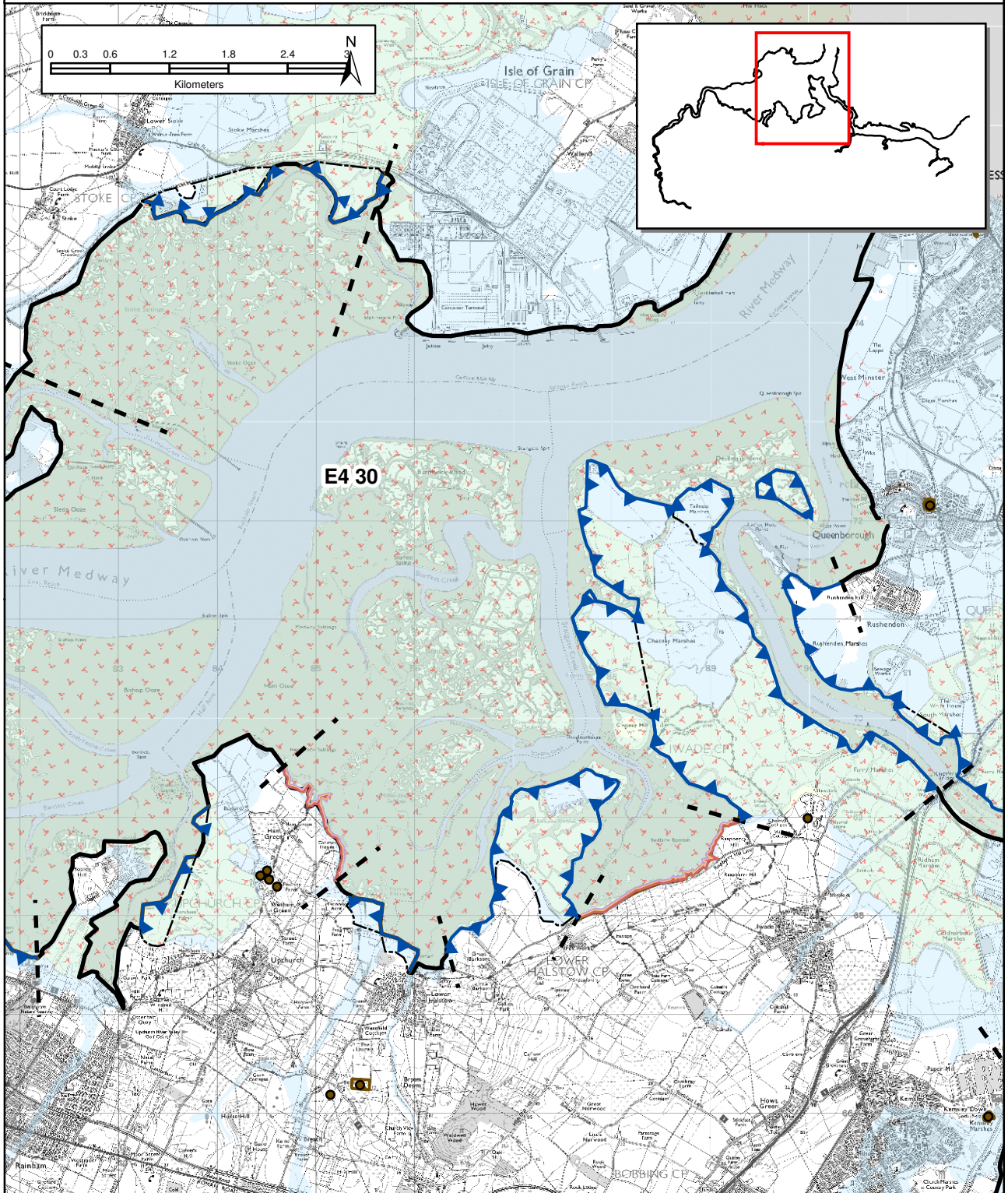
Environmental/Cultural Heritage

- National Nature Conservation Designation
- International Nature Conservation Designation
- Important Heritage Sites (Scheduled Monuments)
- 2005 Indicative floodplain © Environment Agency

This map is based upon Ordnance Survey material with the permission of Ordnance Survey on behalf of the Comptroller of Her Majesty's Stationery Office © Crown copyright. Unauthorised reproduction infringes Crown copyright and may lead to prosecution or civil proceedings. Environment Agency, Licence number 100026380.2007.








Medway Estuary and Swale Shoreline Management Plan

Policy Unit E4 30b: Medway Islands




Policy

From Present Day:	Medium-Term:	Long-Term:
No Active Intervention	No Active Intervention	No Active Intervention

-  Indicative erosion zone up to 2025
-  Indicative erosion zone up to 2055
-  Indicative erosion zone up to 2105
-  Indicative realignment location*
-  Policy Unit Boundary
-  Current shoreline
-  Hold the Line

* Actual realignment extent and location will be the subject of further studies.

Environmental/Cultural Heritage

-  National Nature Conservation Designation
-  Important Heritage Sites (Scheduled Monuments)
-  International Nature Conservation Designation
-  2005 Indicative floodplain © Environment Agency

This map is based upon Ordnance Survey material with the permission of Ordnance Survey on behalf of the Comptroller of Her Majesty's Stationery Office © Crown copyright. Unauthorised reproduction infringes Crown copyright and may lead to prosecution or civil proceedings. Environment Agency, Licence number 100026380.2007.

Location reference: **Medway Islands**

Policy Unit reference: **E4 30**

SUMMARY OF THE PLAN AND JUSTIFICATION

Plan:

A number of saltmarsh islands located in the middle estuary of the Medway. Hoo Saltmarsh Island is used as a dredging disposal site. Nationally significant Scheduled Monuments are located on Hoo Saltmarsh Island (Hoo Fort SM) and Darnet Ness (Darnet Fort SM). Nor Marsh Island forms part of Nor Marsh and Motney Hill RSPB Reserve. Island habitats are nationally and internationally designated for their ecological value and are of landscape importance.

The long term policy for this unit is to maintain the environmental and landscape value of the frontage by allowing the continuation of natural erosion and periodic inundation of the islands. It is considered unsustainable and uneconomic to protect the individual heritage features in the long term.

An ongoing monitoring programme is required to assess the future management needs of the islands.

Preferred policies to implement Plan:

From present day: The present day policy for the Medway Islands is **no active intervention**. This will maintain the environmental and landscape value and free functioning shorelines. However, the heritage assets will become increasingly exposed and potentially eroded.

Evolution of intertidal areas will be dependant on sediment supply. It is predicted that some islands will continue to remain stable as sediment supply is expected to be able to meet demand throughout this epoch. However, other islands such as Burntwick Island, lying adjacent to the main Medway channel, will continue to experience net erosion.

Ongoing monitoring of the islands will continue throughout this epoch to examine present and future evolution of island habitats to help assess future management requirements.

Medium-term: As long as environmental and technical benefits are confirmed by further studies, the medium term policy is to continue allowing natural processes under a policy of **no active intervention**. Erosion of the disposal site may be initiated as sea levels rise. Heritage assets will continue to be exposed and actively eroded.

It is predicted that the islands will continue to evolve as per the previous epoch with some remaining stable as sediment supply is expected to be able to meet demand throughout this epoch. However, erosion may become more prevalent along the seaward edge of the marshes as sea levels rise.

Ongoing monitoring of the islands will continue throughout this epoch to examine the evolution of island habitats to help assess future management

The above provides the local details in respect of the SMP-wide Plan; therefore the above must be read in the context of the wider-scale issues and policy implications, as presented in the preceding sections and Appendices to this Plan document.

Location reference: **Medway Islands**

Policy Unit reference: **E4 30**

requirements.

Long-term:

If the environmental and technical benefits remain, a long term policy of **no active intervention** will continue. This policy will allow the shoreline of the islands to continue to function and evolve freely, maintaining the environmental and landscape value. Protection of heritage features is considered not viable on economic or environmental grounds, therefore it is anticipated that the Scheduled Monuments will be at increased risk from erosion during this period as sea levels rise, with the potential for eventual loss of the features.

It is expected that erosion of some saltmarsh islands will be exacerbated as sea levels rise and sediment supply in the Medway decreases over this epoch. In some instances this may lead to the complete inundation and loss of some saltmarsh islands.

Ongoing monitoring of the islands will continue throughout this epoch to assess future management requirements.

Location reference: *Medway Islands*
Policy Unit reference: *E4 30*

IMPLICATIONS OF THE PLAN FOR THIS LOCATION

Time Period	Management Activities	Material Assets, Infrastructure & Land Use	Landscape	Natural Environment	Historic Environment	Population (Amenity & Recreational Use and Human Health)
0-20 years	Natural processes will be allowed to operate, i.e. erosion and inundation of islands.	Damage to / erosion of built heritage assets.	Designated landscape maintained.	Some effect on internationally designated habitats in contemporary eroding areas, otherwise stability / accretion of habitats. Potential for contamination issues associated with the landfill site on Hoo Island.	Damage to / erosion of Hoo Fort and Darnet Fort SMs. Potential loss of buried unknown heritage.	No recreational objectives identified.
20-50 years	Natural processes will be allowed to operate, i.e. erosion and inundation of islands.	Damage to / erosion of built heritage assets.	Designated landscape maintained.	Some effect on internationally designated habitats in contemporary eroding areas and with inundation as sea levels rise, otherwise stability / accretion of habitats. Potential for contamination issues associated with the landfill site on Hoo Island.	Damage to / erosion of Hoo Fort and Darnet Fort SMs as sea levels rise. Potential loss of buried unknown heritage.	No recreational objectives identified.
50-100 years	Natural processes will be allowed to operate, i.e. erosion and inundation of	Loss of built heritage assets.	Designated landscape maintained.	Potential effect on internationally designated habitats due to sea level rise and a reduced	Eventual loss of SMs as sea levels rise. Potential loss of buried	No recreational objectives identified.

The above provides the local details in respect of the SMP-wide Plan; therefore the above must be read in the context of the wider-scale issues and policy implications, as presented in the preceding sections and Appendices to this Plan document.

	islands.			sediment supply to the estuary. Potential for contamination issues associated with the landfill site on Hoo Island.	unknown heritage.	
--	----------	--	--	--	-------------------	--

The above provides the local details in respect of the SMP-wide Plan; therefore the above must be read in the context of the wider-scale issues and policy implications, as presented in the preceding sections and Appendices to this Plan document.